

DIGITUS Cat.6 U/UTP tesisat kablosu, 500 m, Dca

DK-1614-VH-5
EAN 4016032442141



CAT 6 U-UTP kurulum kablosu, 250 MHz Dca (EN 50575), AWG 23/1, 500m makara, sx, mor

Digitus Cat 6 U/UTP tesisat kablosu ISO/IEC 11801, DIN EN 50288-6-1, DIN EN 50173, IEC 60332-1 uyarınca yapısal veri merkezlerinde ve bina kablo tesisatında kullanılmak için uygundur. Kablo analog ve dijital verilerin iletilmesi için uygundur ve POE ve POE+ özelliklerini destekler.

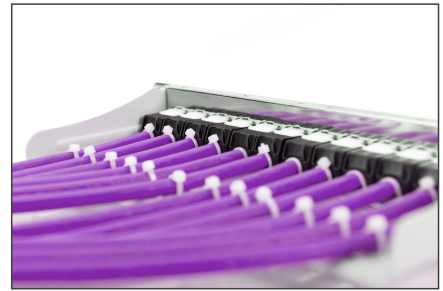
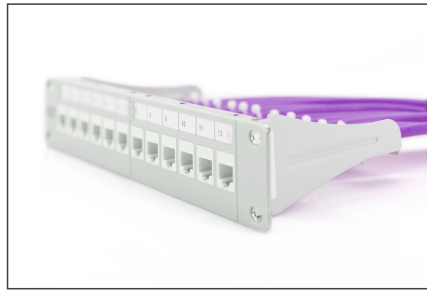
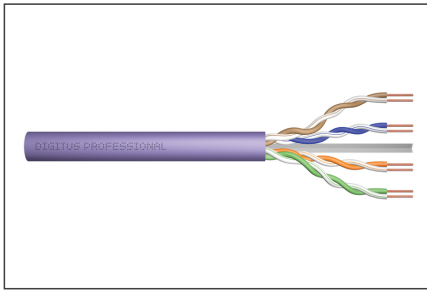
Ağınız için geleceğe yönelik standartlar ve üst düzey kalite.

- Fiziksel özellikler:
- İletken: Çıplak bakır tel AWG 23/1
- Performans istikrarının değerlendirilmesi ve kontrolü için sistemler: Sistem 3
- İzolasyon: HD-PE (High Density Polyethylene)
- Toplam izole iletken sayısı: 8, 4 çift halinde bükülmüş
- Renk kodu: Mavi-beyaz, turuncu-beyaz, yeşil-beyaz, kahverengi-beyaz
- Ayrı çiftlerin blendajı: Yok
- Toplam blendaj: Yok
- Dış kılıf: Eca - B2ca EN 50575 uyarınca; LSZH
- Dış kılıf kalınlığı (nominal): 0,5 mm (Eca); 0,6 mm (Dca); 1,0 mm (Cca); 1,0 mm (B2ca)
- Dış kılıf rengi: Mor (RAL 4005)
- Mekanik özellikler:
- Gerilim azaltma: 150N maks.
- Dinamik bükme yarıçapı: 8x AD mm min.
- Statik bükme yarıçapı: 4x AD mm min.

- Taşıma ve saklama sıcaklığı aralığı: -20 °C ila +60 °C
- Çalışma sıcaklığı aralığı: -20 °C ila +75 °C
- Montaj sıcaklığı aralığı: 0 °C ila +50 °C
- Dış çap simpleks (nominal): 6,1 mm (Eca); 6,3 mm (Dca); 6,8 mm (Cca); 6,8 mm (B2ca)
- Ağırlık (kg/km): 41 kg (Eca); 42 kg (Dca); 44 kg (Cca); 44 kg (B2ca)
- Elektriksel özellikler:
- Empedans: 100±5 Ohm @ 1 - 250MHz
- Kapasite: 40 pF/m nominal @ 800 KHz
- Kapasite asimetrisi (çift toprak): 1,5 pF/m maks. @ 1 KHz
- İzolasyon direnci: 5 GOhm x km min.
- Döngü direnci: 147 Ohm/Km maks. (%2 maks. dengesiz direnç)
- Çalışma gerilimi: 72 Vdc maks.
- Kuplaj kaybı: CA-Type 3
- Faz gecikmesi: 535 nS/100 m maks.
- Çalışma zamanı gecikmesi: 20 nS/100 m maks.
- Ayırma sınıfı: "b" EN 50174-2 uyarınca
- NVP: %69
- Çeşitler: Bükümlü Çift Kurulum Kabloları
- Kategori: CAT 6
- Koruma: U-UTP, korumasız
- CPR: Dca
- CPR: Dca
- Renk: mor
- Kılıf: LSOH
- Yapı: 4 adet 2 AWG 23/1, sabit bükümlü çift

Logistics						
	Number (pcs)	Weight (kg)	Depth (cm)	Width (cm)	Height (cm)	cm ³
Packaging Unit Carton	1	26.00	36.00	36.00	30.00	38,880.00
Packaging Unit Inside	1	26.00	36.00	36.00	30.00	38,880.00
Packaging Unit Single	1	26.00	36.00	36.00	30.00	38,880.00
Net single without Packaging	1	0.00	0.00	0.00	0.00	0.00

More images:



DIGITUS

AWG 23/1, 250 MHz, 1 Gbit Ethernet, CAT 6, 20°/75°, LSZH, Dca, CPU class

CAT 6 U/UTP Installation Cable, 500m, Simplex, D_{ca}

DIGITUS

DK-1614-VH-S // CAT 6 U/UTP Installation Cable, 500m, Simplex, D_{ca}

Anwendungsbeispiel
Example of use

DIGITUS

DK-1614-VH-S // CAT 6 U/UTP Installation Cable, 500m, Simplex, D_{ca}

Kabelquerschnitt
Cable cross section

DIGITUS

Produktdaten Product Information	Physikalische Spezifikationen Physical Properties
Identifikationsdaten Hersteller: DIGITUS Produktname: CAT 6 U/UTP Installation Cable, 500m, Simplex, D _{ca} Artikelnummer: 1614-VH-S EAN: 4012345678901	Normen ISO/IEC 11801 Class E ANSI/TIA 568 Class E IEC 60332-1-2 IEC 60332-3-2 IEC 60332-3-3 IEC 60332-3-4 IEC 60332-3-5 IEC 60332-3-6 IEC 60332-3-7 IEC 60332-3-8 IEC 60332-3-9 IEC 60332-3-10 IEC 60332-3-11 IEC 60332-3-12 IEC 60332-3-13 IEC 60332-3-14 IEC 60332-3-15 IEC 60332-3-16 IEC 60332-3-17 IEC 60332-3-18 IEC 60332-3-19 IEC 60332-3-20 IEC 60332-3-21 IEC 60332-3-22 IEC 60332-3-23 IEC 60332-3-24 IEC 60332-3-25 IEC 60332-3-26 IEC 60332-3-27 IEC 60332-3-28 IEC 60332-3-29 IEC 60332-3-30 IEC 60332-3-31 IEC 60332-3-32 IEC 60332-3-33 IEC 60332-3-34 IEC 60332-3-35 IEC 60332-3-36 IEC 60332-3-37 IEC 60332-3-38 IEC 60332-3-39 IEC 60332-3-40 IEC 60332-3-41 IEC 60332-3-42 IEC 60332-3-43 IEC 60332-3-44 IEC 60332-3-45 IEC 60332-3-46 IEC 60332-3-47 IEC 60332-3-48 IEC 60332-3-49 IEC 60332-3-50 IEC 60332-3-51 IEC 60332-3-52 IEC 60332-3-53 IEC 60332-3-54 IEC 60332-3-55 IEC 60332-3-56 IEC 60332-3-57 IEC 60332-3-58 IEC 60332-3-59 IEC 60332-3-60 IEC 60332-3-61 IEC 60332-3-62 IEC 60332-3-63 IEC 60332-3-64 IEC 60332-3-65 IEC 60332-3-66 IEC 60332-3-67 IEC 60332-3-68 IEC 60332-3-69 IEC 60332-3-70 IEC 60332-3-71 IEC 60332-3-72 IEC 60332-3-73 IEC 60332-3-74 IEC 60332-3-75 IEC 60332-3-76 IEC 60332-3-77 IEC 60332-3-78 IEC 60332-3-79 IEC 60332-3-80 IEC 60332-3-81 IEC 60332-3-82 IEC 60332-3-83 IEC 60332-3-84 IEC 60332-3-85 IEC 60332-3-86 IEC 60332-3-87 IEC 60332-3-88 IEC 60332-3-89 IEC 60332-3-90 IEC 60332-3-91 IEC 60332-3-92 IEC 60332-3-93 IEC 60332-3-94 IEC 60332-3-95 IEC 60332-3-96 IEC 60332-3-97 IEC 60332-3-98 IEC 60332-3-99 IEC 60332-3-100

DIGITUS

Leistungsmerkmale Performance Properties

ISO/IEC 11801	ANSI/TIA 568	IEC 60332-1-2	IEC 60332-3-2	IEC 60332-3-3	IEC 60332-3-4	IEC 60332-3-5	IEC 60332-3-6	IEC 60332-3-7	IEC 60332-3-8	IEC 60332-3-9	IEC 60332-3-10	IEC 60332-3-11	IEC 60332-3-12	IEC 60332-3-13	IEC 60332-3-14	IEC 60332-3-15	IEC 60332-3-16	IEC 60332-3-17	IEC 60332-3-18	IEC 60332-3-19	IEC 60332-3-20	IEC 60332-3-21	IEC 60332-3-22	IEC 60332-3-23	IEC 60332-3-24	IEC 60332-3-25	IEC 60332-3-26	IEC 60332-3-27	IEC 60332-3-28	IEC 60332-3-29	IEC 60332-3-30	IEC 60332-3-31	IEC 60332-3-32	IEC 60332-3-33	IEC 60332-3-34	IEC 60332-3-35	IEC 60332-3-36	IEC 60332-3-37	IEC 60332-3-38	IEC 60332-3-39	IEC 60332-3-40	IEC 60332-3-41	IEC 60332-3-42	IEC 60332-3-43	IEC 60332-3-44	IEC 60332-3-45	IEC 60332-3-46	IEC 60332-3-47	IEC 60332-3-48	IEC 60332-3-49	IEC 60332-3-50	IEC 60332-3-51	IEC 60332-3-52	IEC 60332-3-53	IEC 60332-3-54	IEC 60332-3-55	IEC 60332-3-56	IEC 60332-3-57	IEC 60332-3-58	IEC 60332-3-59	IEC 60332-3-60	IEC 60332-3-61	IEC 60332-3-62	IEC 60332-3-63	IEC 60332-3-64	IEC 60332-3-65	IEC 60332-3-66	IEC 60332-3-67	IEC 60332-3-68	IEC 60332-3-69	IEC 60332-3-70	IEC 60332-3-71	IEC 60332-3-72	IEC 60332-3-73	IEC 60332-3-74	IEC 60332-3-75	IEC 60332-3-76	IEC 60332-3-77	IEC 60332-3-78	IEC 60332-3-79	IEC 60332-3-80	IEC 60332-3-81	IEC 60332-3-82	IEC 60332-3-83	IEC 60332-3-84	IEC 60332-3-85	IEC 60332-3-86	IEC 60332-3-87	IEC 60332-3-88	IEC 60332-3-89	IEC 60332-3-90	IEC 60332-3-91	IEC 60332-3-92	IEC 60332-3-93	IEC 60332-3-94	IEC 60332-3-95	IEC 60332-3-96	IEC 60332-3-97	IEC 60332-3-98	IEC 60332-3-99	IEC 60332-3-100
---------------	--------------	---------------	---------------	---------------	---------------	---------------	---------------	---------------	---------------	---------------	----------------	----------------	----------------	----------------	----------------	----------------	----------------	----------------	----------------	----------------	----------------	----------------	----------------	----------------	----------------	----------------	----------------	----------------	----------------	----------------	----------------	----------------	----------------	----------------	----------------	----------------	----------------	----------------	----------------	----------------	----------------	----------------	----------------	----------------	----------------	----------------	----------------	----------------	----------------	----------------	----------------	----------------	----------------	----------------	----------------	----------------	----------------	----------------	----------------	----------------	----------------	----------------	----------------	----------------	----------------	----------------	----------------	----------------	----------------	----------------	----------------	----------------	----------------	----------------	----------------	----------------	----------------	----------------	----------------	----------------	----------------	----------------	----------------	----------------	----------------	----------------	----------------	----------------	----------------	----------------	----------------	----------------	----------------	----------------	----------------	----------------	----------------	----------------	----------------	----------------	-----------------

Compliance Statement
Ensured Class E / Category 6
ISO/IEC 11801 & ANSI/TIA
Four Connector Channel
D-88533 Leinfelden, Germany

intertek

ETL Verified Certificate of Conformance No. 1627181-0001

intertek.com

GHMT

Certificate
No. 251A7a-18-1
Class E

Zertifikat
Nr. 251A7a-18-1
Klasse E

GHMT Type Approval

DIGITUS

CAT 6.2, CAT 6, CAT 5E, CAT 5, CAT 5E/6, CAT 6

DIGITUS

EN 50575	Brandenklasse	Lebensdauer (typischer Wert)	Anzahl der konfigurierbaren Steile	Zusätzliche Anforderungen
B2ca	Sehr hoch	1+	1	• Typenprüfung • Prüfzyklen • Prüfzyklen • Prüfzyklen
Cca	Hoch	1+	1	• Typenprüfung • Prüfzyklen • Prüfzyklen • Prüfzyklen
Dca	Mittel	3	3	• Typenprüfung • Prüfzyklen
Eca	Gering	1	1	• Typenprüfung • Prüfzyklen

