

# DIGITUS Dual Card Reader Hub USB-C™ / USB 3.0, OTG

DA-70886  
EAN 4016032464464



## Combo Card Reader Hub (USB-C+USB 3.0) 1x SD, 1x MicroSD, 1x USB 3.0, grey

The DIGITUS® Dual Card Reader with an integrated USB hub (OTG) can either be connected to your smartphone, tablet or notebook. This allows you to access inserted storage media such as USB sticks, SD or MicroSD memory cards. You can connect the device via the hub's USB A (USB 3.0) or the USB-C™ plug. The USB hub and the memory card reader can be used simultaneously. This allows you to move or copy files between both ports. Thanks to Plug and Play, there is no need for any driver or app installations. Perfect e.g. to back up your holiday pictures directly on-site, eliminating the need for a notebook.

### Simple connectivity of memory cards and USB sticks with your smartphone or tablet - USB-C™ & USB A

- USB-C™ port data transfer rate: 480 Mbps (USB 2.0)
- USB 3.0 port data transfer rate: 5 Gbps SuperSpeed (USB 3.0)
- Card reader data transfer rate: 480 Mbps (USB 2.0)
- Supports SD / MicroSD memory cards up to 2 TB
- Connection 1: USB 3.0 (USB A)
- Connection 2: USB-C™ USB 2.0

- Contacts: gold-plated 30μ
- Supported operating systems: Windows 11/10/8/7, macOS 10.2.8 or higher, iOS, Android with OTG support
- Housing: Aluminum alloy
- Dimensions: L 86.5 x W 20.5 x H 12 mm
- Weight: 28 g
- Manufacturer's notice:
- Only one card reader can be used at a time
- Smartphones / tablets must support OTG.

### Attributes

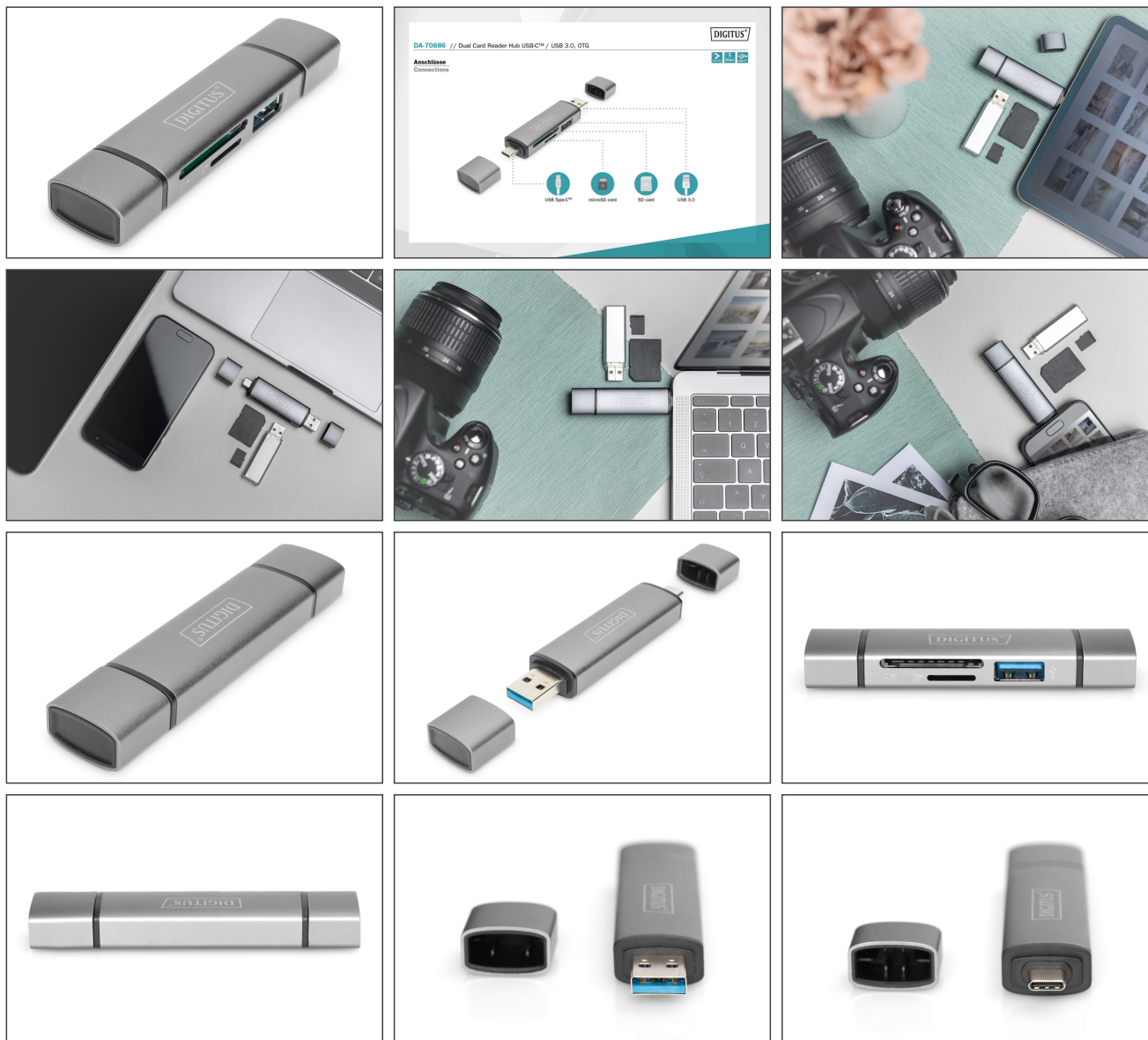
- Number of ports: 1
- USB standard: USB 3.0 / 3.1
- USB-A (3.0) Connectors: 1
- USB-C Connectors: 1
- USB-C Products: yes

### Package contents

- Dual Card Reader Hub USB-C™ / USB 3.0, OTG
- QIG

Logistics						
	Number (pcs)	Weight (kg)	Depth (cm)	Width (cm)	Height (cm)	cm³
Packaging Unit Carton	125	7.53	35.00	35.00	46.00	56,350.00
Packaging Unit Inside	1	0.06	10.00	10.00	1.80	180.00
Packaging Unit Single	1	0.06	2.00	8.50	14.00	238.00
Net single without Packaging	1	0.03	1.20	2.10	8.70	0.00

**More images:**



**Safety notes**

- Overloading can lead to overheating and damage to the appliance or the connected peripherals.
- If necessary, use an external power supply to ensure stable performance.
- If devices such as external hard disks or printers that require a high power consumption are connected, the device should be used with an external power supply. Otherwise, the device could be overloaded or functional problems could occur.
- Do not expose the device to rain, moisture, vapors or liquids.
- Do not insert any objects into the device.
- Do not attempt to repair the unit or open the housing without authorization. You risk an electric shock!
- Ensure adequate ventilation to prevent damage due to overheating.
- Dust, moisture, vapors and strong cleaning agents or solvents can cause damage to the device.
- Disconnect the appliance from the power supply and the connected devices before cleaning.
- Clean the device with a dust-free cloth.

**EU responsible person**

EU based economic operator ensuring the product complies with the required regulations.

ASSMANN Electronic GmbH  
Auf dem Schüffel 3  
Lüdenscheid, Germany  
<https://www.assmann.com>  
[info@assmann.com](mailto:info@assmann.com)