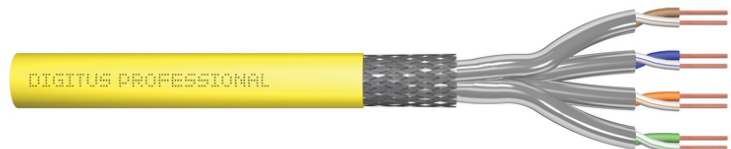


DIGITUS Cat. 7A S/FTP installation cable, 100 m, simplex, Dca-s1a d1 a1

DK-1743-A-VH-1
EAN 4016032462828



CAT 7A S-FTP installation cable, 1500 MHz, Dca, AWG 22/1, 100 m ring, SX, yellow

The Digitus Cat 7 installation cable is designed for use in the structured data center and the building cabling according to ISO/IEC 11801, DIN EN 50288-4-1, DIN EN 50173, IEC 61156-7, EN 50288-9-1. The cable is perfectly suitable for the transmission of both analog and digital data and also supports POE and POE+. The shielding structure is composed of single shielded pairs with a tinned copper braid, which ensures excellent shielding and electrical values.

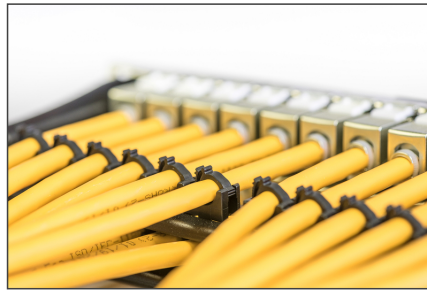
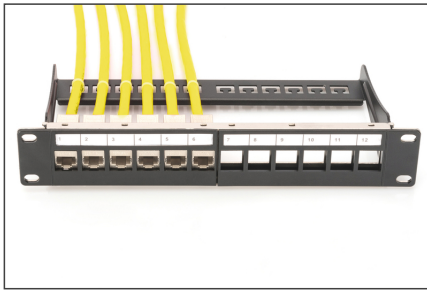
Future-oriented standards and high-end quality for your network.

- Physical properties:
- Cable: AWG 22/1, bare copper wire
- System/s of AVCP: AVCP 3
- Insulation: SFS-PE (foamed polyethylene sheath)
- Total number of insulated conductors: 8, twisted in 4 pairs
- Color code: blue-white, orange-white, green-white, brown-white
- Shielding of the individual pairs: aluminum-covered polyester film, 100% coverage
- Overall shielding: Copper mesh
- Outer sheath: Halogen-free (FRNC-C/LSZH-3)
- Outer sheath thickness: 0.6 mm nominal
- Color: Sulfur yellow (RAL 1016)
- Length: 100 m
- Mechanical properties:
- Tensile loading: 150N max.
- Dynamic bending radius: 8x AD mm min.
- Static bending radius: 4x AD mm min.
- Transport and storage temperature range: -20 °C to +75 °C
- Operating temperature range: -20 °C to +60 °C

- Installation temperature range: 0 to +50 °C
- External diameter: 8.0 mm nominal
- Non-flammability: IEC 60332-3-24
- Halogen-free & smoke density: IEC 60754-2 & IEC 61034
- Fire load: 700 MJ/km
- Weight: 70 kg/km
- Electrical properties:
- Average impedance: 100±5 ohm at 1-600 MHz
- Capacity: 40 pF/m nominal @ 1 KHz
- Capacity unbalance (pair earth): 1.6 pF/m max. @ 1 KHz
- Insulation resistance: 5G ohm x km min.
- Loop resistance: 147 ohm/km max. (2% max. non-balanced resistance)
- Operating voltage: 72 VDC max.
- Coupling attenuation: Grade 1 (CA type 1b)
- Phase delay: 450 nS/100 m max.
- Signal delay: 10 nS/100 m max.
- Segregation classification: "d" in accordance with EN 50174-2
- Segregation classification: "d" in accordance with EN 50174-2
- NVP: 79%
- Flame spread: EN 60332-1-2 (LSOH-PVC)
- Halogen-free, corrosiveness: EN 60754-1/2 (LSOH)
- Smoke density: EN 61034-2
- Assortment: Twisted Pair Installation Cables
- Category: CAT 7A
- Shielding: S-FTP, pairs in metal foil and braid shielding
- CPR: Dca
- Length: 100 m
- Color: yellow
- Jacket: LSOH
- Structure: 4 x 2 AWG 22/1, solid twisted pair

Logistics						
	Number (pcs)	Weight (kg)	Depth (cm)	Width (cm)	Height (cm)	cm ³
Packaging Unit Carton	1	5.68	28.00	28.00	16.00	12,544.00
Packaging Unit Inside	1	5.68	28.00	28.00	16.00	12,544.00
Packaging Unit Single	1	5.68	28.00	28.00	16.00	12,544.00
Net single without Packaging	1	0.00	0.00	0.00	0.00	0.00

More images:



DIGITUS

1500 MHz
10 Gbit Ethernet
CAT 7e
1.000 MHz

AWG 22/1
LSZH
D Ca
CPE class

CAT 7e S/FTP Installation Cable, 100 m, Simplex, D_{Ca}

DIGITUS

DK.1743-A-VH-1 // CAT 7e S/FTP Installation Cable, 100m, Simplex, D_{Ca}

Anwendungsbeispiel
Example of use

DIGITUS

DK.1743-A-VH-1 // CAT 7e S/FTP Installation Cable, 100m, Simplex, D_{Ca}

Kabelquerschnitt
Cable cross section

DIGITUS

Produktdatenblatt Produkt Information

Technische Spezifikationen Technical Properties

Physikalische Spezifikationen Physical Properties

Mechanische Spezifikationen Mechanical Properties

DIGITUS

Leistungsparameter Transmission Properties

FRF45	ATT	NEXT	PS NEXT	ACR	PS ACR	RL	ELFEXT	PS ELFEXT
100	20	40	20	20	20	20	20	20
10	15	30	15	15	15	15	15	15
1	12	24	12	12	12	12	12	12
0.1	10	20	10	10	10	10	10	10
0.01	8	16	8	8	8	8	8	8
0.001	6	12	6	6	6	6	6	6
0.0001	4	8	4	4	4	4	4	4
0.00001	2	4	2	2	2	2	2	2

GHMT

Certificate
No. 184318-18-1

Zertifikat
No. 184318-18-1

Category 7

Category 7

GHMT

Certificate
No. 184318-18-1

Zertifikat
No. 184318-18-1

Class E

Class E

DIGITUS

DIGITUS

GHMT Type Approval

Category 7

Category 7

