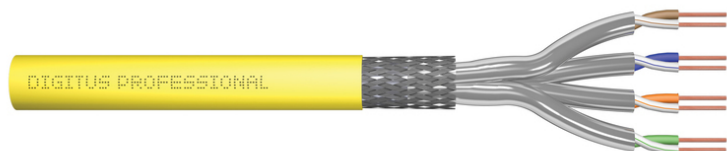


DIGITUS CAT 7A S/FTP installation cable, 500 m, Simplex, B2ca

DK-1745-A-VH-5
EAN 4016032435921



CAT 7A S-FTP installation cable, 1500 MHz B2ca (EN 50575), AWG 22/1, 500 m drum,

Digitus Cat 7A installation cable is designed for use in structured data center & building cabling in accordance with ISO/IEC 11801, DIN EN 50173, IEC 61156-7, EN 50288-9-1. Excellent for transmission of analog and digital, data, audio, video, signal transmission, 10 Gbit Ethernet, POE+. The shield structure consists of single shielded pairs with a tinned copper braid, which ensures excellent shielding and electrical values.

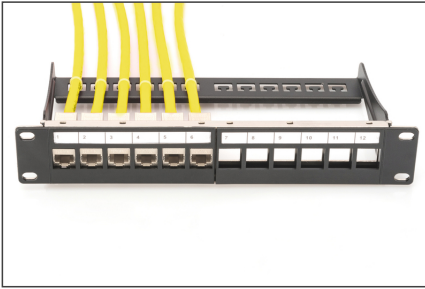
DIGITUS® CAT 7A S/FTP installation cable 4x2x AWG22/1 up to 1500 MHz. The halogen-free cable sheath complies with the standards IEC 60332-3-24, FRNC-C, LSZH-3 and CPR Euro class B2ca. Complies with ISO/IEC 11801, DIN EN 50173, DIN EN 50288-4-1.

- Physical properties:
- Conductor: Bare annealed copper, solid AWG 22/1
- Insulation: SFS-PE (Foam-Skin Polyethylene)
- Total number of insulated conductors: 8, twisted in 4 pairs
- Color code: Blue-white, orange-white, green-white, brown-white
- Individual pair shielding: Aluminum foil, providing 100 % coverage
- Overall shielding: Copper braid
- Outer sheath: Eca to B2ca acc. to EN 50575; LSZH
- Outer sheath diameter (nominal): 0,50 mm (Eca); 0,52 mm (Dca); 0,60 mm (Cca); 0,60 (B2ca)
- Mechanical properties:
- Tensile loading: 150N max.
- Dynamic bending radius: 8x AD mm min.
- Static bending radius: 4x AD mm min.
- Shipping- and storage temperature range: -20 °C up to +60 °C
- Operating temperature range: -20 °C up to +50 °C

- Installation temperature range: 0 °C up to +50 °C
- Overall diameter Simplex (nominal): 7,0 mm (Eca); 7,2 mm (Dca); 7,5 mm (Cca); 7,5 mm (B2ca)
- Weight (kg/km): 49,5 kg (Eca); 51 kg (Dca), 53 kg (Cca); 53 kg (B2ca)
- Electrical properties:
- Impedance: 100±15 Ohm @ 4 - 1000 MHz; 100±25 OHM @ 100-600 MHz
- Capacitance: 45 pF/m nominal @ 1 KHz
- Capacitance unbalance (pair-ground): 1.6 pF/m max. @ 1 KHz
- Insulation resistance: 5 GOhm x km min.
- DC resistance: 95 Ohm/km max. (2% max. resistance unbalance)
- DC loop resistance: 190 Ohm/km max. (2% max. resistance unbalance)
- Voltage resistance: 72 Vdc max.
- Coupling attenuation: CA-Type 1b
- Signal propagation delay: 450 nS/100 m max.
- Propagation delay: 10 nS/100 m max.
- Separating class: "d" acc. to EN 50174-2
- Separating class: "d" acc. to EN 50174-2
- NVP: 79%
- Flame spread: EN 60332-1-2 (LSOH-PVC)
- Halogen-free, corrosiveness: EN 60754-1/2 (LSOH)
- Smoke density: EN 61034-2
- Assortment: Twisted Pair Installation Cables
- Category: CAT 7A
- Shielding: S-FTP, pairs in metal foil and braid shielding
- CPR: B2ca
- Length: 500 m
- Color: yellow
- Jacket: LSOH
- Structure: 4 x 2 AWG 22/1, solid twisted pair

Logistics						
	Number (pcs)	Weight (kg)	Depth (cm)	Width (cm)	Height (cm)	cm³
Packaging Unit Carton	1	33.57	55.00	55.00	22.50	68,062.50
Packaging Unit Inside	1	33.57	55.00	55.00	22.50	68,062.50
Packaging Unit Single	1	33.57	55.00	55.00	22.50	68,062.50
Net single without Packaging	1	0.00	0.00	0.00	0.00	0.00

More images:



DIGITUS

AWG 22/1 | 1500 MHz | 10 Cat.7a Ethernet | CAT 7a | 20°/1,50" | 6 | LSZH | B2_{ca} CPR class

CAT 7a S/FTP Installation Cable, 500 m, Simplex, B2_{ca}

DIGITUS

DK-1745-A-VH-S // CAT 7a S/FTP Installation Cable, 500m, Simplex, B2_{ca}

Anwendungsbeispiel
Example of use

DIGITUS

DK-1745-A-VH-S // CAT 7a S/FTP Installation Cable, 500m, Simplex, B2_{ca}

Kabelquerschnitt
Cable cross section

Adressierung: Cat. point
Adressierung: Hubpoint
Geflechtsschirm: Shield braid
Geflechtsschirm: Shield foil
Panterschirm: Drainage

DIGITUS

Produktinformation Product Information

Bezeichnung / Name	DK-1745-A-VH-S	Hersteller / Manufacturer	DIGITUS
AWG	22/1	Material / Material	LSZH
Bandbreite / Bandwidth	1500 MHz	Norm / Norm	ISO/IEC 11801 Class EA
Leistung / Power	10 Cat.7a	Lebensdauer / Lifetime	10 Jahre / 10 years
Lebensdauer / Lifetime	10 Jahre / 10 years	Lebensdauer / Lifetime	10 Jahre / 10 years

Technische Eigenschaften Physical Properties

Lebensdauer / Lifetime	10 Jahre / 10 years	Lebensdauer / Lifetime	10 Jahre / 10 years
Lebensdauer / Lifetime	10 Jahre / 10 years	Lebensdauer / Lifetime	10 Jahre / 10 years

DIGITUS

Leitungsparameter Transmission Properties

Paar / Pair	AWG	MDR	PL-MDR	ACH	PL-ACH	PL	RLX	RLX-M	PL-RLX-M
1	24	110	100	100	100	100	100	100	100
2	24	110	100	100	100	100	100	100	100
3	24	110	100	100	100	100	100	100	100
4	24	110	100	100	100	100	100	100	100
5	24	110	100	100	100	100	100	100	100
6	24	110	100	100	100	100	100	100	100
7	24	110	100	100	100	100	100	100	100
8	24	110	100	100	100	100	100	100	100
9	24	110	100	100	100	100	100	100	100
10	24	110	100	100	100	100	100	100	100
11	24	110	100	100	100	100	100	100	100
12	24	110	100	100	100	100	100	100	100
13	24	110	100	100	100	100	100	100	100
14	24	110	100	100	100	100	100	100	100
15	24	110	100	100	100	100	100	100	100
16	24	110	100	100	100	100	100	100	100
17	24	110	100	100	100	100	100	100	100
18	24	110	100	100	100	100	100	100	100
19	24	110	100	100	100	100	100	100	100
20	24	110	100	100	100	100	100	100	100
21	24	110	100	100	100	100	100	100	100
22	24	110	100	100	100	100	100	100	100
23	24	110	100	100	100	100	100	100	100
24	24	110	100	100	100	100	100	100	100
25	24	110	100	100	100	100	100	100	100
26	24	110	100	100	100	100	100	100	100
27	24	110	100	100	100	100	100	100	100
28	24	110	100	100	100	100	100	100	100
29	24	110	100	100	100	100	100	100	100
30	24	110	100	100	100	100	100	100	100
31	24	110	100	100	100	100	100	100	100
32	24	110	100	100	100	100	100	100	100
33	24	110	100	100	100	100	100	100	100
34	24	110	100	100	100	100	100	100	100
35	24	110	100	100	100	100	100	100	100
36	24	110	100	100	100	100	100	100	100
37	24	110	100	100	100	100	100	100	100
38	24	110	100	100	100	100	100	100	100
39	24	110	100	100	100	100	100	100	100
40	24	110	100	100	100	100	100	100	100
41	24	110	100	100	100	100	100	100	100
42	24	110	100	100	100	100	100	100	100
43	24	110	100	100	100	100	100	100	100
44	24	110	100	100	100	100	100	100	100
45	24	110	100	100	100	100	100	100	100
46	24	110	100	100	100	100	100	100	100
47	24	110	100	100	100	100	100	100	100
48	24	110	100	100	100	100	100	100	100
49	24	110	100	100	100	100	100	100	100
50	24	110	100	100	100	100	100	100	100
51	24	110	100	100	100	100	100	100	100
52	24	110	100	100	100	100	100	100	100
53	24	110	100	100	100	100	100	100	100
54	24	110	100	100	100	100	100	100	100
55	24	110	100	100	100	100	100	100	100
56	24	110	100	100	100	100	100	100	100
57	24	110	100	100	100	100	100	100	100
58	24	110	100	100	100	100	100	100	100
59	24	110	100	100	100	100	100	100	100
60	24	110	100	100	100	100	100	100	100
61	24	110	100	100	100	100	100	100	100
62	24	110	100	100	100	100	100	100	100
63	24	110	100	100	100	100	100	100	100
64	24	110	100	100	100	100	100	100	100
65	24	110	100	100	100	100	100	100	100
66	24	110	100	100	100	100	100	100	100
67	24	110	100	100	100	100	100	100	100
68	24	110	100	100	100	100	100	100	100
69	24	110	100	100	100	100	100	100	100
70	24	110	100	100	100	100	100	100	100
71	24	110	100	100	100	100	100	100	100
72	24	110	100	100	100	100	100	100	100
73	24	110	100	100	100	100	100	100	100
74	24	110	100	100	100	100	100	100	100
75	24	110	100	100	100	100	100	100	100
76	24	110	100	100	100	100	100	100	100
77	24	110	100	100	100	100	100	100	100
78	24	110	100	100	100	100	100	100	100
79	24	110	100	100	100	100	100	100	100
80	24	110	100	100	100	100	100	100	100
81	24	110	100	100	100	100	100	100	100
82	24	110	100	100	100	100	100	100	100
83	24	110	100	100	100	100	100	100	100
84	24	110	100	100	100	100	100	100	100
85	24	110	100	100	100	100	100	100	100
86	24	110	100	100	100	100	100	100	100
87	24	110	100	100	100	100	100	100	100
88	24	110	100	100	100	100	100	100	100
89	24	110	100	100	100	100	100	100	100
90	24	110	100	100	100	100	100	100	100
91	24	110	100	100	100	100	100	100	100
92	24	110	100	100	100	100	100	100	100
93	24	110	100	100	100	100	100	100	100
94	24	110	100	100	100	100	100	100	100
95	24	110	100	100	100	100	100	100	100
96	24	110	100	100	100	100	100	100	100
97	24	110	100	100	100	100	100	100	100
98	24	110	100	100	100	100	100	100	100
99	24	110	100	100	100	100	100	100	100
100	24	110	100	100	100	100	100	100	100

DIGITUS

Certificate
No. 0887-23

Zertifikat
No. 0887-23

2-Schicht Permanent DSL, Super, Class G

GHMT Type Approval

DIGITUS

CE (EMC) | **CE** (RoHS)

ASBAMANN

DIGITUS

Leitungsparameter Transmission Properties

DIGITUS

Leitungsparameter Transmission Properties

B2_{ca} | **C_{ca}** | **D_{ca}** | **E_{ca}**

1+ | **3**

C_{ca} s1a d1 a1

