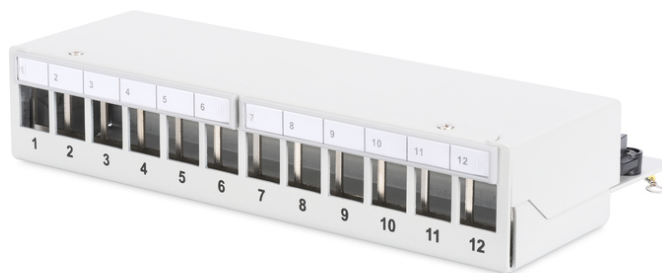


DIGITUS Desktop Modular Patch Panel, shielded, 12-port

DN-93706
EAN 4016032435242



Modular Desktop Patch Panel, shielded 12-port, light grey

The Desktop Patch Panels from DIGITUS® are the ideal solution for SoHo applications (Smart Office Home Office). The 12-port patch panel is the perfect solution for organizing and managing network cables in a variety of environments such as industrial, data centers, offices, buildings, and homes. With full shielding, the patch panel is protected from interference and ensures stable transmission. The integrated design without edges gives it an elegant appearance, and it can be flexibly installed as a desktop or wall mount. The patch panel is easy to install and takes up little space in your office or home. It is suitable for a 10-inch cabinet or rack and features built-in cable management and a removable top cover to ensure neat cabling. The fixed rear design adds organization and elegance. Made of cold-rolled steel, the patch

panel is durable and highly compatible with all types of modules. It is certified to provide a reliable and secure way to organize and manage network cables. The patch panel is available in light grey color and offers 12 ports for a variety of applications. This patch panel is a high-quality and reliable solution for organizing and managing network cables in various environments.

Применяется в решениях для дома / малого офиса

- Патч-панель для разъемов Keystone
- Экранированный
- Прозрачные поля метки
- Color: light grey, RAL 7035
- Ports: 12
- Units: 1

Logistics						
	Number (pcs)	Weight (kg)	Depth (cm)	Width (cm)	Height (cm)	cm³
Packaging Unit Carton	20	16.80	31.00	28.00	58.00	50,344.00
Packaging Unit Inside	1	0.84	0.00	0.00	0.00	0.00
Packaging Unit Single	1	0.84	26.50	12.50	6.00	1,987.50
Net single without Packaging	1	0.00	0.00	0.00	0.00	0.00

More images:

