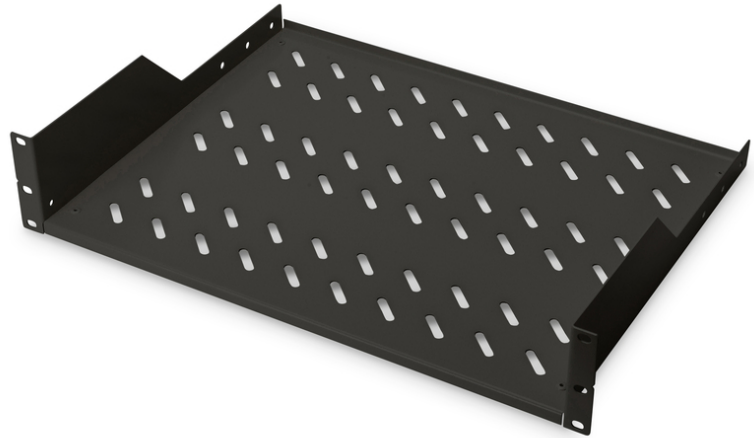


# DIGITUS Полки для сетевых шкафов

**DN-19 TRAY-2-SW**  
**EAN 4016032222613**



**2U fixed shelf for racks from 450 mm depth 88x482x349 mm, up to 25 kg, black (RAL 9005)**

The shelves for fixed mounting can be installed easy on the two front 483 mm (19") profile rails of your 483 mm (19") network- or server cabinet. Due to their stable, perforated steel sheet with a high load capacity, they are the optimal surface for components which are not 483 mm (19") suitable.

- Установлены неподвижно
- Крепёжный материал входит в комплект поставки

- Color: black, RAL 9005
- Load capacity: 25 kg
- Mounting type: Fixed mounting
- Units: 2
- Inch form factor (IEC 60297): 482.6 mm (19")
- Suitable cabinet depth: ≥ 450 mm

**Package contents**

- Installation set (screws, cage nuts, washers)

| Logistics                    |              |             |            |            |             |            |
|------------------------------|--------------|-------------|------------|------------|-------------|------------|
|                              | Number (pcs) | Weight (kg) | Depth (cm) | Width (cm) | Height (cm) | cm³        |
| Packaging Unit Carton        | 5            | 11.66       | 50.00      | 51.00      | 39.50       | 100,725.00 |
| Packaging Unit Inside        | 1            | 2.33        | 49.30      | 27.40      | 9.50        | 12,832.80  |
| Packaging Unit Single        | 1            | 2.33        | 49.30      | 27.40      | 9.50        | 12,832.80  |
| Net single without Packaging | 1            | 2.00        | 35.20      | 48.30      | 8.90        | 0.00       |