

DIGITUS Universal Dual Monitor Stand, vertical

DA-90438**EAN 4016032481928****Universal Dual Monitor Mount, Vertical 17-32", 8 kg max. each, clamp or grommet mount**

The desktop mount allows you to mount two monitors of up to 32" / 8 kg vertically, one above the other. Swiveling, rotating as well as tilting of the monitors is made possible by the mount. The quick-release function enables rapid attachment or removal of monitors. The mount offers two mounting options: both table clamp and pass-through rod are included in the scope of delivery.

The desktop mount allows you to mount two monitors of up to 32" / 8 kg vertically, one above the other

- Suitable for (curved) monitors up to 32" / 8 kg max.
- Quick release: VESA plate can be fixed/released by means of a screw during mounting and dismounting
- Height-adjustable, rotate, swivel
- VESA compatibility: 75x75, 100x100
- Integrated cable management: for an organized and tidy workspace

- Monitor mount: Tilt: -45°/+45°, Swivel: -45°/+45°, Front panel rotation range: -180°/+180°
- Material: Steel, plastic
- Surface: Powder coating
- Number of monitors: 2
- Two mounting options: both table clamp and pass-through rod
- Color: Black, matte
- Weight: 4.2 kg

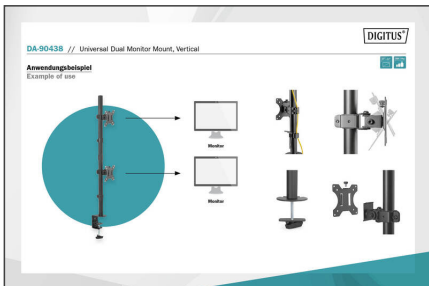
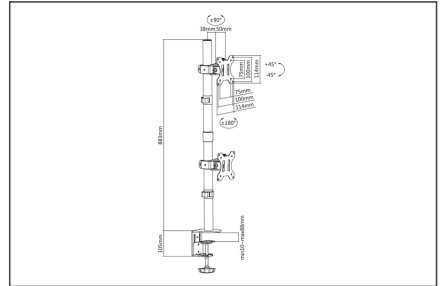
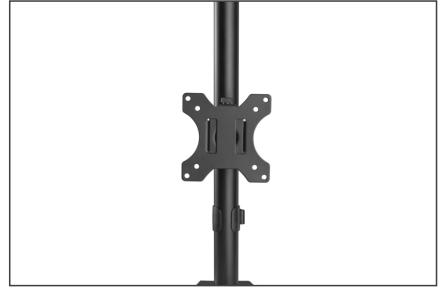
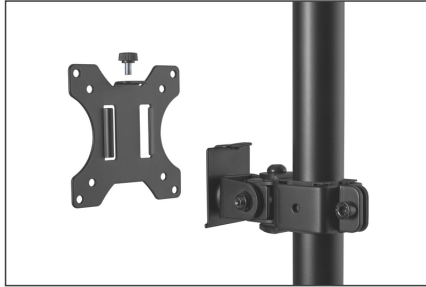
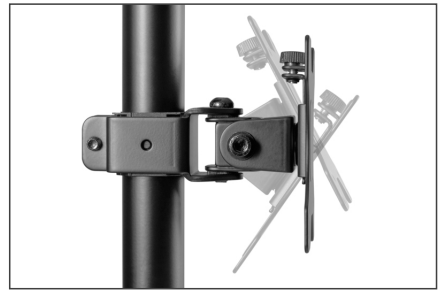
Attributes

- Monitor weight (max.): 8 kg
- Mounting method: Clamp-mount
- Number of monitors: 2
- Size of monitors: up to 32"
- VESA mount: 75x75 mm, 100x100 mm

Package contents

- 1 x Universal Dual Monitor Stand, vertical
- 1 x Mounting material
- 1 x Assembly instructions

Logistics						
	Number (pcs)	Weight (kg)	Depth (cm)	Width (cm)	Height (cm)	cm³
Packaging Unit Carton	4	19.50	31.50	50.50	26.00	41,359.50
Packaging Unit Inside	1	4.88	0.00	0.00	0.00	0.00
Packaging Unit Single	1	4.88	15.30	49.60	12.30	9,334.22
Net single without Packaging	1	4.20	15.00	11.50	99.00	0.00



- Please read the entire manual before starting assembly and installation. Please contact your local dealer if you have any questions about the instructions or warnings.
- **CAUTION:** Use with products that exceed the permitted weight may result in damage or possible injury.
- Brackets should be fitted in accordance with the installation instructions. Incorrect installation can result in damage or injury.
- Use safety equipment and suitable tools. The product should only be installed by specialists.
- This product can be installed on timber-framed, solid concrete or stone walls.
- The load-bearing surfaces should be able to safely withstand the entire weight of appliances and all additional components.
- Only use the installation screws supplied and **DO NOT TIGHTEN** the screws **TOO TIGHT**.
- This product contains small parts that can cause a choking hazard if swallowed. Keep these parts away from children.
- Only use this product indoors. Using the product outdoors can lead to injuries and damage.
- **IMPORTANT:** Before installation, please compare all components received with the components list. If parts are damaged or missing, ask your local dealer for replacement parts.
- **MAINTENANCE:** Check the bracket regularly for safety and stability (preferably every three months).

ASSMANN Electronic GmbH
Auf dem Schüffel 3
Lüdenscheid, Germany
<https://www.assmann.com>

info@assmann.com