

DIGITUS Universal Dual Monitor Mount with Gas Spring and Clamp Mount

DA-90427

EAN 4016032479765



Dual Gas Spring Monitor Desk Mount 2x 35", 2x 15 kg max. black

With the universal monitor mount from DIGITUS®, you can conveniently attach a monitor with dimensions between 15" - 35" to your desk using a clamp fixture. The quick release function also makes it easier for you to install the monitor. The VESA bracket is simply inserted into the corresponding mount and automatically snaps in. Without a great deal of effort, you can arrange the monitor according to your needs and swivel, tilt or rotate the monitor, for instance for monitors in portrait mode. Support of the integrated gas spring facilitates height adjustment of the monitor. The monitor cables can be stored in an orderly fashion using the cable routing included in delivery. Do a good deed for yourself and your health by adjusting your monitor optimally for your body and your sitting position.

The desktop mount allows you to individually arrange monitors from 35". The monitors can be swiveled, tilted and rotated. The integrated gas spring facilitates height adjustment. With quick release function.

- For flat and curved monitors from 15" - 35"
- Maximum load capacity: 15 kg (per monitor)
- VESA compatibility: 75 x 75, 100 x 100
- Tilt: -45°/+45°, Swivel: -180°/+180°, Front panel rotation range: -90°/+90°

- Swivel arm: offers maximum flexibility of vision
- Gas spring: perfectly balances the weight of your monitor
- Built-in spring compressor for perfect weight adjustment
- Integrated cable management: for an organized and tidy working area
- Material: Aluminum, plastic, steel
- Surface: Powder coating
- Number of monitors: 2
- Mounting type: Table mounting
- Length: L 111 x W 12.8 x H 75 cm
- Weight: 8.7 kg
- Color: Black, matte

Attributes

- Monitor weight (max.): 15 kg
- Mounting method: Clamp-mount
- Number of monitors: 2
- VESA mount: 75x75 mm, 100x100 mm

Package contents

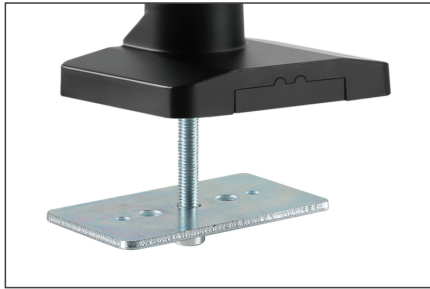
- 1x Universal monitor table mount
- 1x Mounting accessories
- 1x Quick installation guide

Logistics

	Number (pcs)	Weight (kg)	Depth (cm)	Width (cm)	Height (cm)	cm ³
Packaging Unit Carton	2	20.42	37.50	66.50	26.00	64,837.50
Packaging Unit Inside	1	10.21	0.00	0.00	0.00	0.00
Packaging Unit Single	1	10.21	35.50	64.50	12.00	27,477.00
Net single without Packaging	1	8.70	12.80	11.10	75.00	0.00

Technical drawing of the robot arm showing dimensions and joint ranges. The drawing includes the following specifications:

- Horizontal reach: 206mm (min) to 220mm (max)
- Vertical reach: 120mm
- Joint 1 (Base): $\pm 180^\circ$
- Joint 2 (Shoulder): $\pm 150^\circ$
- Joint 3 (Wrist): $\pm 90^\circ$
- End effector dimensions: 100mm (width), 150mm (height), 150mm (depth)
- End effector weight: 1.5kg
- End effector material: AlSi10Mg
- End effector shape: $\text{max } 12^\circ \times \text{max } 60^\circ$
- End effector material: $\text{max } 12^\circ \times \text{max } 60^\circ$



- Please read the entire manual before starting assembly and installation. Please contact your local dealer if you have any questions about the instructions or warnings.
- **CAUTION:** Use with products that exceed the permitted weight may result in damage or possible injury.
- Brackets should be fitted in accordance with the installation instructions. Incorrect installation can result in damage or injury.
- Use safety equipment and suitable tools. The product should only be installed by specialists.
- This product can be installed on timber-framed, solid concrete or stone walls.
- The load-bearing surfaces should be able to safely withstand the entire weight of appliances and all additional components.
- Only use the installation screws supplied and **DO NOT TIGHTEN** the screws **TOO TIGHT**.
- This product contains small parts that can cause a choking hazard if swallowed. Keep these parts away from children.
- Only use this product indoors. Using the product outdoors can lead to injuries and damage.
- **IMPORTANT:** Before installation, please compare all components received with the components list. If parts are damaged or missing, ask your local dealer for replacement parts.
- **MAINTENANCE:** Check the bracket regularly for safety and stability (preferably every three months).

EU based economic operator ensuring the product complies with the required regulations.

www.digitus.info Druckfehler, Irrtümer und technische Änderungen sind vorbehalten. | Printing errors, falsities and technical changes remain reserved. 2