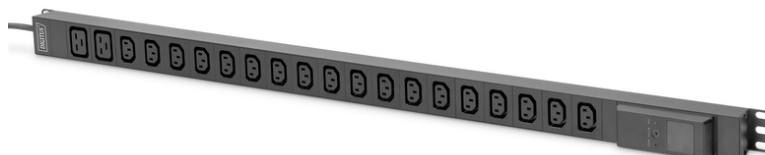


DIGITUS Local monitored PDU, 1-phase, 18 x C13, 2 x C19

DN-95622
EAN 4016032473404



Local monitored PDU, vertical, 250V, 16A, 18x C13, 2x C19 16A ammeter, 16A DIN49441 plug, 3m cable

The DIGITUS® PDU offers you the possibility to measure the electrical input values locally in addition to the efficient power distribution, thus the load distribution can be monitored very easily on site. Equipped with C13 and C19 outputs, the PDU offers a flexible basis for professional power distribution in server and network racks. It is designed for vertical installation, which saves height units and provides more space for additional devices.

Safe and professional power distribution solution with local metering for monitoring loads in network and server racks.

- Outlets: 18 x C13 outlet, 2 x C19 outlet
- Mains cable: 3 x 1.5 mm², DIN 49441 16 A plug
- Cable: 3 m
- Max. load: 4,000 W / 250 V AC / 16 A (50/60Hz)
- Display: LCD
- Protective element Amp meter 16 A
- Installation: Vertical, two angle profiles for cabinet installation
- Dimensions (LxWxD): 983 x 44.4 x 44.4 mm
- Installation length: 962 mm
- Housing length: 930 mm

- Temperature ranges (operation / storage): -5 °C to +45 °C / -40 °C to +70 °C
- Humidity ranges (operation / storage): 5% - 95% RH / 5% - 95% RH (non-condensing)
- Maximum height above sea level (operation / storage): 0 - 3,000 m / 0 - 15,000 m
- Color: Black
- Protection type: IP44
- Mounting material: 2 pcs. 6x16 mm cross-headed screw, 2 pcs. M6 nut
- Current: 16 A
- Input Plug: CEE7/7
- Installation: Rack 0U, Desktop
- Metering: PDU Metering
- Outlets: IEC 60320 C13, IEC 60320 C19
- Phase: 1ph
- Power: 3,6 kVA
- Volts: 230 V

Package contents

- 1 x PDU with local energy measurement, 1-phase, 18 x C13, 2 x C19, 3 m cable DIN 49441 16 A plug
- 1 x Fastening material

Logistics						
	Number (pcs)	Weight (kg)	Depth (cm)	Width (cm)	Height (cm)	cm ³
Packaging Unit Carton	10	21.00	25.50	110.00	44.50	124,822.00
Packaging Unit Inside	1	2.10	0.00	0.00	0.00	0.00
Packaging Unit Single	1	2.10	11.50	108.00	8.50	10,557.00
Net single without Packaging	1	1.80	4.40	98.30	4.40	0.00

More images:

