

DIGITUS USB-C™ Serial Adapter, USB-C™ - RS485

DA-70168**EAN 4016032473046****USB Typ-C to RS485 Converter cable 1m cable length, FTDI chipset**

The DIGITUS® USB-C™ serial adapter is a practical solution for serial connectivity. RS485 serial interfaces are no longer available on new hardware, so the DIGITUS® USB-C™ serial adapter enables data exchange between a computer USB-C™ port and peripheral devices with serial interfaces (COM port, RS485). These include, for example, weather stations, sensors, machine control systems, set-top boxes, gaming consoles, PDAs, scanners, modems, ISDN adapters and many other peripheral devices. The USB 2.0 serial adapter is downwardly compatible with USB 1.1 and enables adaptable baud rates of between 75 and 128,000 bits per second. The customizable FTDI FT232RL+SP485 chipset is compatible with all common operating systems and also supports power management and remote wake up. A separate power supply is not required, because the device is powered through the USB connection.

Provides a serial RS485 interface via USB-C™ port

- Provides a serial RS485 interface via USB-C™ port
- Meets the USB 2.0 standard

- Downward compatibility with USB 1.1
- Adaptable data transfer rates of between 75 and 128,000 bits per second.
- Supports remote wake up and power management
- Chipset: FTDI FT232RL+SP485
- Customizable with the FTDI FT232RL+SP485 chipset
- 1× RS485 plug (Sub D 9-pole) / 1× USB-C™ plug
- Interface: Full duplex
- Gilded contacts
- Incl. USB extension cable, approx. 1 m
- Supports Windows 10, 8.1, 8, 7, Vista, XP, Mac OS X and Linux
- True 3.3V CMOS drive output and TTL input

Attributes

- USB-C Products: yes

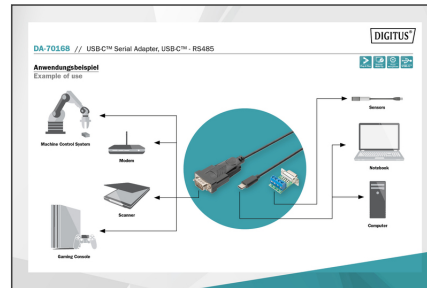
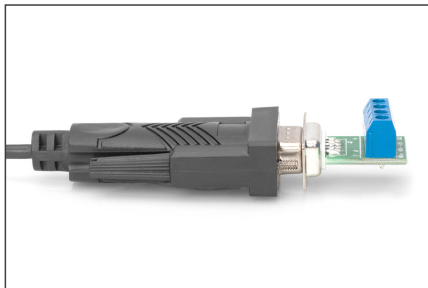
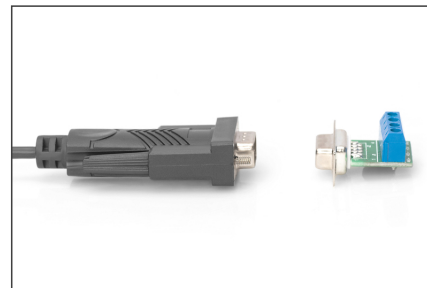
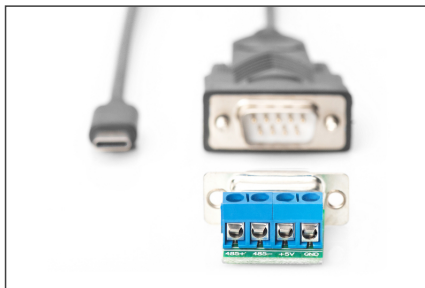
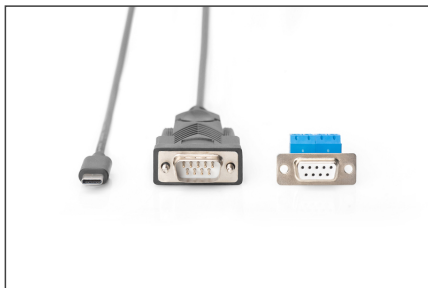
Package contents

- USB-C™ Serial Adapter, USB-C™ - RS485
- USB extension cable
- Driver CD

Logistics

	Number (pcs)	Weight (kg)	Depth (cm)	Width (cm)	Height (cm)	cm³
Packaging Unit Carton	100	11.40	32.30	50.50	47.60	77,642.70
Packaging Unit Inside	1	0.11	0.00	0.00	0.00	0.00
Packaging Unit Single	1	0.11	20.20	8.60	2.30	399.56
Net single without Packaging	1	0.05	1.50	3.50	100.00	0.00

More images:



Safety notes

- Overloading can lead to overheating and damage to the appliance or the connected peripherals.
- If necessary, use an external power supply to ensure stable performance.
- If devices such as external hard disks or printers that require a high power consumption are connected, the device should be used with an external power supply. Otherwise, the device could be overloaded or functional problems could occur.
- Do not expose the device to rain, moisture, vapors or liquids.
- Do not insert any objects into the device.
- Do not attempt to repair the unit or open the housing without authorization. You risk an electric shock!
- Ensure adequate ventilation to prevent damage due to overheating.
- Dust, moisture, vapors and strong cleaning agents or solvents can cause damage to the device.
- Disconnect the appliance from the power supply and the connected devices before cleaning.
- Clean the device with a dust-free cloth.

EU responsible person

EU based economic operator ensuring the product complies with the required regulations.

ASSMANN Electronic GmbH
Auf dem Schüffel 3
Lüdenscheid, Germany
<https://www.assmann.com>
info@assmann.com