

DIGITUS CAT 6 U/UTP slim patch cord

DK-1617-025S
EAN 4016032467809



CAT 6 U-UTP slim patch cord, Cu, LSZH AWG 28/7, length 2.5 m, color grey

DIGITUS® slim patch cords are characterised by their small outer diameter and flexible sheath. Slim design enables versatile use in your network. Moreover, DIGITUS® slim patch cords are manufactured according to ISO/IEC 11801 and DIN EN 50173 CAT 6 standards. They guarantee that the cable installation complies with the ISO & EN channel specification and provide excellent performance in DIGITUS® CAT 6 cabling. Performance was tested up to 250 MHz, including performance characteristics such as near-end crosstalk ("NEXT"). DIGITUS® patch cords were specifically designed to fully meet all requirements in various application areas. Each cable is equipped with a moulded anti-kink sleeve with strain relief. In addition, the sleeve has a locking lever protection, which prevents kinking of the cables and breaking-off of the locking lever from the connector. Category 6 is simply identified by the red coloured connectors.

Enables flexible and space-saving cabling in your network.

- 2x RJ45 connectors (8P8C)
- Covers with kink protection, strain relief and locking lever protection
- Length indication on hoods
- Inner conductors: Copper (Cu)
- Halogen free: yes
- Pin Assignment: 1:1
- Category: 6

- AWG cross-section: 28
- Anti-kink sleeve: moulded
- Connector 1 type: RJ45 8(8)
- Connector 2 type: RJ45 8(8)
- Cable design: 4x2
- Flame retardant version: yes
- Anti-kink sleeve colour: Grey
- Locking lever protection: yes
- NVP value: 69
- Oil resistant to EN 60811-404: no
- Bending radius: 4D (outer diameter x 4)
- Sheath colour: Grey
- Length: 2.5 m

Attributes

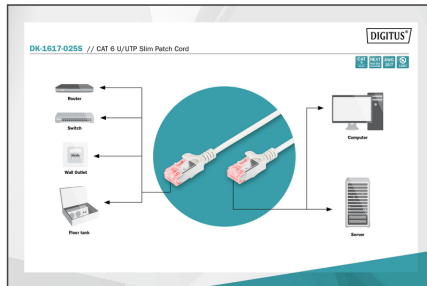
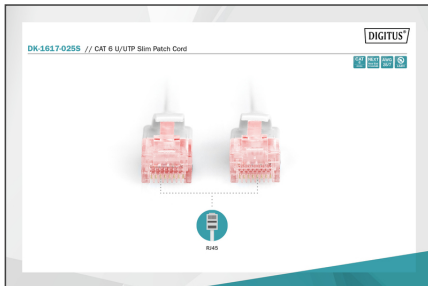
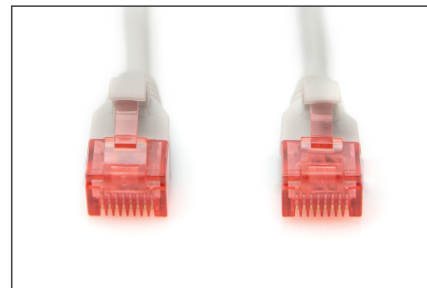
- Configuration: 1:1
- Category: CAT 6
- Shielding: U-UTP, unshielded
- Color: grey
- Jacket: LSOH
- Slim Version: yes
- Structure: 4 x 2 AWG 24/7, twisted pair
- Flat Version: no

Package contents

- Slim CAT 6 U/UTP patch cord, LSZH

Logistics						
	Number (pcs)	Weight (kg)	Depth (cm)	Width (cm)	Height (cm)	cm³
Packaging Unit Carton	200	1.06	32.00	50.00	21.00	33,600.00
Packaging Unit Inside	10	0.05	35.50	30.50	6.70	7,254.42
Packaging Unit Single	1	0.01	25.00	17.00	1.00	425.00
Net single without Packaging	1	0.05	17.00	17.00	1.00	0.00

More images:



Safety notes

- When plugging and unplugging the cable, only grasp the plug and do not pull directly on the cable.
- Cables must not be kinked sharply or bent at tight angles, as this can damage the inner wires and lead to failures.
- Ensure that the cables are not under tensile load, as this can damage the insulation and the wires inside the cable.
- Ensure that cables are not laid in areas where they can be easily damaged mechanically.
- Cables should not be used in environments with extremely high or very low temperatures. Observe the product information on the maximum operating temperature of the cable
- Check cables regularly for visible damage such as cracks, kinks or signs of wear. Defective cables should be replaced immediately to avoid failures, short circuits or even electric shocks.

EU responsible person

EU based economic operator ensuring the product complies with the required regulations.

ASSMANN Electronic GmbH
Auf dem Schöffel 3
Lüdenscheid, Germany
<https://www.assmann.com>
info@assmann.com