

DIGITUS Conversor VGA - HDMI

DA-70473
EAN 4016032444213



VGA to HDMI Converter + Audio (3.5mm) Full HD (1080p), cable type (15 cm), black

O conversor Digitus VGA - HDMI permite-lhe converter o sinal VGA analógico num sinal HDMI digital. A conversão permite a ligação de equipamentos, que apenas possuem uma ligação VGA, a um monitor HDMI, TV ou projetor sem quaisquer problemas. Uma vez que a entrada VGA apenas consegue reproduzir um sinal de vídeo, o conversor está adicionalmente equipado com um conector RCA áudio de 3,5 mm. Um sinal estéreo eventualmente existente é assim paralelamente convertido e integrado no sinal HDMI. Tal permite que os sinais áudio sejam reproduzidos através de HDMI, p. ex., na sua televisão.

Converte o seu sinal VGA analógico num sinal HDMI digital

- Converte sinais de vídeo e áudio de VGA para HDMI
- Ligue equipamentos antigos com porta VGA a, p. ex., a televisões, monitores ou projetores
- Transmissão de áudio adicional (tomada de 3,5 mm)
- Alimentação através de USB
- A instalação de software ou driver não é necessária
- Resolução máx.: Full HD 1920x1080p / 60 Hz

- Entrada: VGA + estéreo áudio
- Saída: HDMI
- Comprimento do cabo: 15 cm
- Taxa de transferência HDMI: 6,75 Gbps
- Largura da banda de 225 MHz/1,65 Gbps por canal (total de 6,75)
- As resoluções utilizáveis com o conversor dependem do seu equipamento/placa gráfica
- Dimensões: C 4,5 x L 4,5 x A 1,5 cm
- Peso: 50 g
- Cor: Preto

Attributes

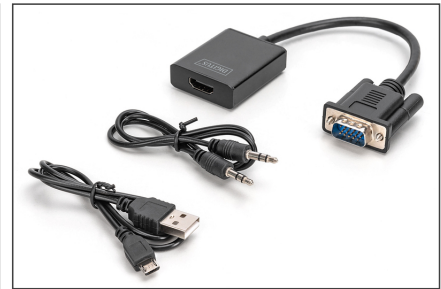
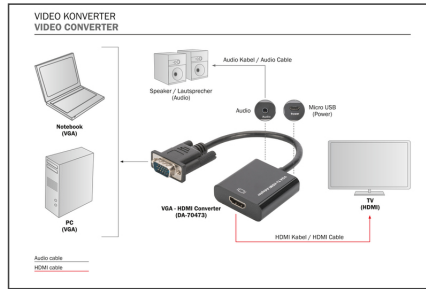
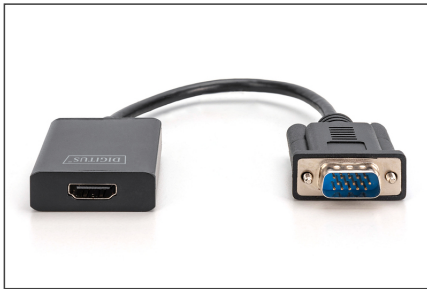
- HDTV Resolution max.: 1920 x 1080 Pixel, 60Hz
- HDTV Standard: Full HD
- Audio: yes
- Signal input: VGA
- Signal output: HDMI

Package contents

- Conversor VGA - HDMI
- Cabo áudio (3,5 mm), 0,5 m
- Cabo micro USB de 0,5 m

Logistics						
	Number (pcs)	Weight (kg)	Depth (cm)	Width (cm)	Height (cm)	cm³
Packaging Unit Carton	60	8.60	52.00	27.00	26.00	36,504.00
Packaging Unit Inside	1	0.14	26.50	7.50	2.30	457.13
Packaging Unit Single	1	0.14	26.50	7.50	2.30	457.13
Net single without Packaging	1	0.05	4.50	4.50	1.50	0.00

More images:



Safety notes

- If the device is powered by a plug-in power supply, ensure that the power adapter is connected correctly and meets the specified requirements (e.g. voltage and current).
- Only use certified CAT5e or CAT6 cables to ensure stable signal transmission.
- For particularly long cable runs or in environments prone to interference, it is recommended to use shielded network cables.
- Make sure that all connections are tight and secure to avoid loose contacts that could affect the signal quality. Make sure that the HDMI and Ethernet connections are connected correctly.
- Make sure that the CAT cable is not laid near high-voltage power lines or other strong sources of electromagnetic interference to avoid signal interference.
- Only operate the device within the specified temperature range.
- Do not use the device outdoors or in damp or wet environments
- Check all connections and cables regularly for wear or damage. Cables and connections can wear out, especially with frequent use or long installations, which can lead to poor signal quality or system failure.

EU responsible person

EU based economic operator ensuring the product complies with the required regulations.

ASSMANN Electronic GmbH
 Auf dem Schüffel 3
 Lüdenscheid, Germany
<https://www.assmann.com>
info@assmann.com