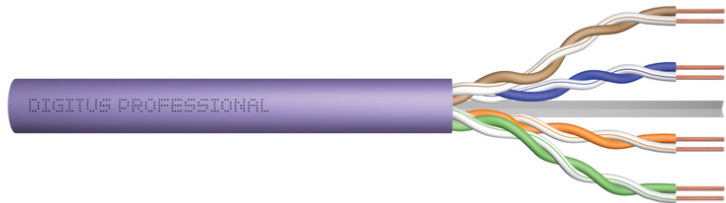


DIGITUS CAT 6 U/UTP installation cable, 500 m, Dca

DK-1614-VH-5
EAN 4016032442141



CAT 6 U-UTP installation cable, 250 MHz Dca (EN 50575), AWG 23/1, 500m drum, sx, pu

The Digitus Cat 6 U/UTP installation cable is designed for use in the structured data center and the building cabling according to ISO/IEC 11801, DIN EN 50288-6-1, DIN EN 50173, IEC 60332-1. The cable is perfectly suitable for the transmission of both analog and digital data and also supports POE and POE+.

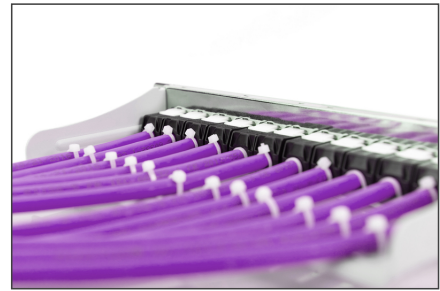
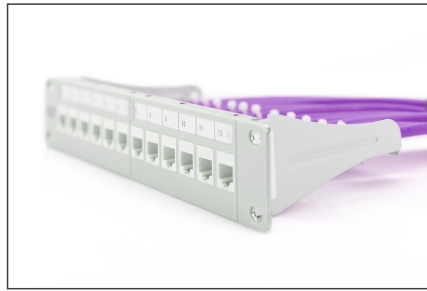
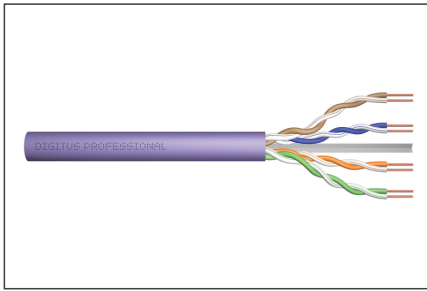
Future-oriented standards and high-end quality for your network.

- Physical properties:
- Conductor: Bare annealed copper, solid AWG 23/1
- System/s of AVCP: AVCP 3
- Insulation: HD-PE (High Density Polyethylene)
- Total number of insulated conductors: 8, twisted in 4 pairs
- Color code: Blue-white, orange-white, green-white, brown-white
- Individual pair shield: None
- Overall shielding: None
- Outer sheath: Eca to B2ca acc. to EN 50575; LSZH
- Outer sheath diameter (nominal): 0,5 mm (Eca); 0,6 mm (Dca); 1,0 mm (Cca); 1,0 mm (B2ca)
- Outer sheath color: Purple (RAL 4005)
- Mechanical properties:
- Tensile loading: 150N max.
- Dynamic bending radius: 8x AD mm min.
- Static bending radius: 4x AD mm min.
- Shipping- and storage temperature range: -20 °C up to +60 °C

- Operating temperature range: -20 °C up to +75 °C
- Installation temperature range: 0 °C up to +50 °C
- Overall diameter Simplex (nominal): 6,1 mm (Eca); 6,3 mm (Dca); 6,8 mm (Cca); 6,8 mm (B2ca)
- Weight (kg/km): 41 kg (Eca); 42 kg (Dca); 44 kg (Cca); 44 kg (B2ca)
- Electrical properties:
- Impedance: 100±50Ωm @ 1 - 250MHz
- Capacitance: 40 pF/m nominal @ 800 Hz
- Capacitance unbalance (pair-ground): 1.5 pF/m max. @ 1 KHz
- Insulation resistance: 5 GΩm x km min.
- DC loop resistance: 147 Ωm/km max. (2% max. resistance unbalance)
- Voltage resistance: 72 Vdc max.
- Coupling attenuation: CA-Type 3
- Signal propagation delay: 535 nS/100 m max.
- Propagation delay: 20 nS/100 m max.
- Separating class: „b“ acc. to EN 50174-2
- NVP: 69%
- Assortment: Twisted Pair Installation Cables
- Category: CAT 6
- Shielding: U-UTP, unshielded
- CPR: Dca
- CPR: Dca
- Length: 500 m
- Color: violet
- Jacket: LSOH
- Structure: 4 x 2 AWG 23/1, solid twisted pair

Logistics						
	Number (pcs)	Weight (kg)	Depth (cm)	Width (cm)	Height (cm)	cm³
Packaging Unit Carton	1	26.00	36.00	36.00	30.00	38,880.00
Packaging Unit Inside	1	26.00	36.00	36.00	30.00	38,880.00
Packaging Unit Single	1	26.00	36.00	36.00	30.00	38,880.00
Net single without Packaging	1	0.00	0.00	0.00	0.00	0.00

More images:



CAT 6 U/UTP Installation Cable, 500m, Simplex, D_{ca}

- AWG 23/1
- 250 MHz
- 1 Gbit Ethernet
- CAT 6
- 20°/75°
- LSZH
- D_{ca} CPRI class

DK 1614-VH-S // CAT 6 U/UTP Installation Cable, 500m, Simplex, D_{ca}

Anwendungsbeispiel
Example of use

DK 1614-VH-S // CAT 6 U/UTP Installation Cable, 500m, Simplex, D_{ca}

Kabelquerschnitt
Cable cross section

Produktdaten Product Information	Physikalische Spezifikationen Physical Properties
Identifikationsnummer Identification Number DK 1614-VH-S (100m) DK 1614-VH-S (500m) DK 1614-VH-S (1000m)	Typ Type Simplex, 500m
Normen Standards EN 50323-1, EN 50323-2-1, EN 50323-2-2, EN 50323-2-3, EN 50323-2-4, EN 50323-2-5, EN 50323-2-6, EN 50323-2-7, EN 50323-2-8, EN 50323-2-9, EN 50323-2-10, EN 50323-2-11, EN 50323-2-12, EN 50323-2-13, EN 50323-2-14, EN 50323-2-15, EN 50323-2-16, EN 50323-2-17, EN 50323-2-18, EN 50323-2-19, EN 50323-2-20, EN 50323-2-21, EN 50323-2-22, EN 50323-2-23, EN 50323-2-24, EN 50323-2-25, EN 50323-2-26, EN 50323-2-27, EN 50323-2-28, EN 50323-2-29, EN 50323-2-30, EN 50323-2-31, EN 50323-2-32, EN 50323-2-33, EN 50323-2-34, EN 50323-2-35, EN 50323-2-36, EN 50323-2-37, EN 50323-2-38, EN 50323-2-39, EN 50323-2-40, EN 50323-2-41, EN 50323-2-42, EN 50323-2-43, EN 50323-2-44, EN 50323-2-45, EN 50323-2-46, EN 50323-2-47, EN 50323-2-48, EN 50323-2-49, EN 50323-2-50, EN 50323-2-51, EN 50323-2-52, EN 50323-2-53, EN 50323-2-54, EN 50323-2-55, EN 50323-2-56, EN 50323-2-57, EN 50323-2-58, EN 50323-2-59, EN 50323-2-60, EN 50323-2-61, EN 50323-2-62, EN 50323-2-63, EN 50323-2-64, EN 50323-2-65, EN 50323-2-66, EN 50323-2-67, EN 50323-2-68, EN 50323-2-69, EN 50323-2-70, EN 50323-2-71, EN 50323-2-72, EN 50323-2-73, EN 50323-2-74, EN 50323-2-75, EN 50323-2-76, EN 50323-2-77, EN 50323-2-78, EN 50323-2-79, EN 50323-2-80, EN 50323-2-81, EN 50323-2-82, EN 50323-2-83, EN 50323-2-84, EN 50323-2-85, EN 50323-2-86, EN 50323-2-87, EN 50323-2-88, EN 50323-2-89, EN 50323-2-90, EN 50323-2-91, EN 50323-2-92, EN 50323-2-93, EN 50323-2-94, EN 50323-2-95, EN 50323-2-96, EN 50323-2-97, EN 50323-2-98, EN 50323-2-99, EN 50323-2-100	
Technische Eigenschaften Technical Properties Leitungsstruktur Conductor Structure 4x23 AWG Leitungsstruktur Conductor Structure 4x23 AWG	Leitungsstruktur Conductor Structure 4x23 AWG Leitungsstruktur Conductor Structure 4x23 AWG
Mechanische Eigenschaften Mechanical Properties Lebensdauer Lifetime 10 Jahre Lebensdauer Lifetime 10 Jahre	Mechanische Eigenschaften Mechanical Properties Lebensdauer Lifetime 10 Jahre Lebensdauer Lifetime 10 Jahre

Leistungsmerkmale Performance Properties

1000	100	10	1	0,1	0,01	0,001	0,0001	0,00001
1000	100	10	1	0,1	0,01	0,001	0,0001	0,00001
1000	100	10	1	0,1	0,01	0,001	0,0001	0,00001
1000	100	10	1	0,1	0,01	0,001	0,0001	0,00001
1000	100	10	1	0,1	0,01	0,001	0,0001	0,00001
1000	100	10	1	0,1	0,01	0,001	0,0001	0,00001
1000	100	10	1	0,1	0,01	0,001	0,0001	0,00001
1000	100	10	1	0,1	0,01	0,001	0,0001	0,00001
1000	100	10	1	0,1	0,01	0,001	0,0001	0,00001
1000	100	10	1	0,1	0,01	0,001	0,0001	0,00001

Compliance Statement
Essenced Class E / Category 6
ISO/IEC, EN & ANSI/TIA
Four Connector Channel
D-88513 Leinfelden, Germany

intertek

ETL Verified Certificate of Conformance No. 1427181-0001

Approved by: [Signature]

Approved on: [Date]

Certificate
No. 251A7a-18-1

Zertifikat
Nr. 251A7a-18-1

Class E

Class E

GHMT Type Approval

GHMT Type Approval

DIGITUS

DIGITUS

EN Normen	Normenreihe	Leistungsmerkmale (EN 50323)	Anforderungen an die Fertigung (EN 50323)	Zusätzliche Anforderungen
B2ca	Sehr hoch	1+	• Typspezifische Fertigung	s
Cca	Hoch	1	• Typspezifische Fertigung	d
Dca	Mittel	3	• Typspezifische Fertigung	a
Eca	Niedrig	3	• Typspezifische Fertigung	a

