

# DIGITUS Cat.6A U/UTP installation cable, 500 m, simplex, Dca

DK-1614-A-VH-5  
EAN 4016032441885



### CAT 6A U-UTP installation cable, 500 MHz Dca (EN 50575), AWG 23/1, 500 m drum, sx, blue

DIGITUS® Category 6A U-UTP installation cables are manufactured and tested to the ISO/IEC 11801, TIA/586-C.2 and EN 50173 Category 6A specifications. Every cord consists of 8 color coded AWG 23 polyethylene insulated conductors. The conductors are twisted together to form 4 pairs with varying lay lengths. Printing details along the outer sheath includes the brand name and item code. The cable is packed in a paper pullout box which makes the installation easy.

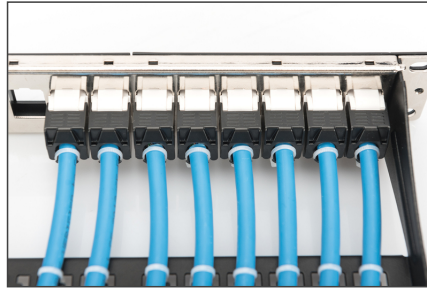
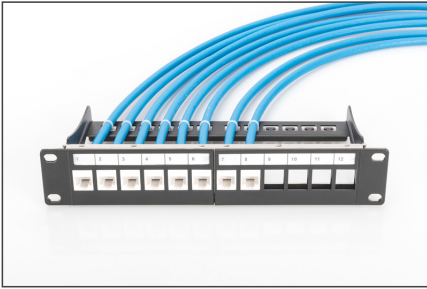
#### Future-oriented standards and high-end quality for your network.

- Physical properties:
- Conductor: Bare annealed copper, olid AWG 23/1
- Insulation: HD-PE (High Density Polyethylene)
- Total number of insulated conductors: 8, twisted in 4 pairs
- Color code: Blue-white, orange-white, green-white, brown-white
- Individual pair shield: None
- Overall shielding: None
- Outer sheath: Dca to B2ca acc. to EN 50575; LSZH
- Outer sheath diameter (nominal): 0,5 mm (Eca); 0,6 mm (Dca); 1,2 mm (Cca); 1,4 mm (B2ca)
- Outer sheath color: Light blue (RAL 5012)
- Mechanical properties:
- Tensile loading: 150N max.
- Dynamic bending radius: 8x AD mm min.
- Static bending radius: 4x AD mm min.

- Shipping- and storage temperature range: -20 °C up to +60 °C
- Operating temperature range: -20 °C up to +75 °C
- Installation temperature range: 0 °C up to +50 °C
- Overall diameter Simplex (nominal): 7,1 mm (Eca); 7,3 mm (Dca); 7,4 mm (Cca); 7,6 mm (B2ca)
- Weight (kg/km): 53 kg (Eca); 54 kg (Dca); 55 kg (Cca); 56 kg (B2ca)
- Electrical properties:
- Impedance: 100±50hm @ 1 - 600MHz
- Capacitance: 40 pF/m nominal @ 1 KHz
- Capacitance unbalance (pair-ground): 1.6 pF/m max. @ 1 KHz
- Insulation resistance: 5 GOhm x km min.
- DC loop resistance: 147 Ohm/km max. (2% max. resistance unbalance)
- Voltage resistance: 72 Vdc max.
- Coupling attenuation: CA-Type 2
- Signal propagation delay: 450 nS/100 m max.
- Propagation delay: 10 nS/100 m max.
- Separating class: "c" acc. to EN 50174-2
- NVP: 70%
- Category: CAT 6A
- Shielding: U-UTP, unshielded
- CPR: Dca
- CPR: Dca
- Length: 500 m
- Color: light-blue
- Jacket: LSOH
- Structure: 4 x 2 AWG 23/1, solid twisted pair

Logistics						
	Number (pcs)	Weight (kg)	Depth (cm)	Width (cm)	Height (cm)	cm³
Packaging Unit Carton	1	27.50	50.00	50.00	22.00	55,000.00
Packaging Unit Inside	1	27.50	50.00	50.00	22.00	55,000.00
Packaging Unit Single	1	27.50	50.00	50.00	22.00	55,000.00
Net single without Packaging	1	27.50	0.00	0.00	0.00	0.00

More images:



**DIGITUS**

**23** 23-pin RJ45 connector

**1+** 1+ pair (Blue/White-Blue)

**3** 3 pairs (Blue/White-Blue, Orange/White-Orange, Green/White-Green)

**Color coding:** Blue/White-Blue, Orange/White-Orange, Green/White-Green, Brown/White-Brown, Black/White-Black

**Legend:** s1a, d1, a1, Cca

**DIGITUS**

**CAT 6A** (Blue)

**CAT 6** (Orange)

**CAT 5E** (Green)

**CAT 5** (Yellow)

**CAT 3** (Black)

**Compliance Statement**

RoHS, REACH, CE, FCC, etc.

**intertek** **ETL**

UL Listed, ETL Listed

**DIGITUS**

AWG	EXT	EXT	EXT	EXT	EXT	EXT	EXT	EXT
23	1.0	1.0	1.0	1.0	1.0	1.0	1.0	1.0
22	1.1	1.1	1.1	1.1	1.1	1.1	1.1	1.1
20	1.3	1.3	1.3	1.3	1.3	1.3	1.3	1.3
18	1.8	1.8	1.8	1.8	1.8	1.8	1.8	1.8
16	2.4	2.4	2.4	2.4	2.4	2.4	2.4	2.4
14	3.7	3.7	3.7	3.7	3.7	3.7	3.7	3.7
12	5.0	5.0	5.0	5.0	5.0	5.0	5.0	5.0

**DIGITUS**

Product Information	Physical Properties
Product Name: CAT 6A U/UTP Installation Cable, 500m, Simplex, Dca	Material: PVC Jacket, Copper Conductors
Length: 500m	Conductor Type: Solid
AWG: 23/1	Shielding: None
Frequency: 500 MHz	Temperature Range: -30°C to +75°C
Speed: 10 Gbit Ethernet	LSZH: Yes
Class: CAT 6A	CPR Class: Cca

**DIGITUS**

**DK-1614-A-VH-S // CAT 6A U/UTP Installation Cable, 500m, Simplex, Dca**

**Kabelquerschnitt**  
Cable cross section

Adressierte Datenleitung (Addressed data line)  
CuShield (Cu/Al) (Copper shield)  
Adressspanne (Address span)

**DIGITUS**

**DK-1614-A-VH-S // CAT 6A U/UTP Installation Cable, 500m, Simplex, Dca**

**Anwendungsbeispiel**  
Example of use

DK-30216 (Patch panel)      DK-30216 (Network switch)

**DIGITUS**

**CAT 6A U/UTP Installation Cable, 500m, Simplex, Dca**

AWG 23/1, 500 MHz, 10 Gbit Ethernet, CAT 6A, 20°/4-75° LSZH, Cca CPR class