

DIGITUS Suporte de parede universal para monitores de até 81cm (32")

DA-90303-1
EAN 4016032383123



Wall Mount for monitor up to 81cm (32") fix mount, 18kg max load, max VESA 100x100

Suporte de monitor universal para a fixação na parede do seu monitor LED, LCD. Distância da parede de apenas 18 mm para uma suspensão elegante do seu ecrã plano. O suporte para monitores permite a montagem de monitores LED, LCD de todas as marcas. Tenha apenas atenção à dimensão VESA, bem como ao peso do seu monitor, de modo a escolher um suporte adequado.

Adequação universal para todos os monitores LED e LCD com possibilidade de fixação de acordo com a norma VESA

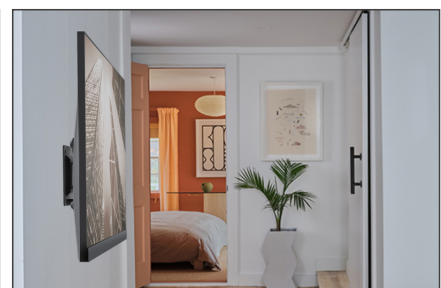
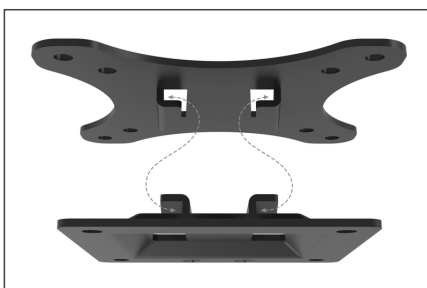
- Adequado para distâncias de acordo com a norma VESA 75 x 75 e 100 x 100 mm
- Para monitores de até 81 cm (32") e um peso máximo de 18kg
- Distância da parede de apenas 18 mm
- Nível de água integrado para uma montagem simples
- Peso 0,3kg
- Dimensões: 120 x 120 x 18 mm

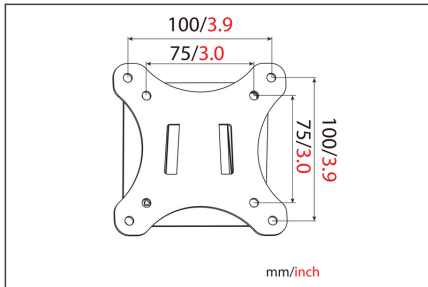
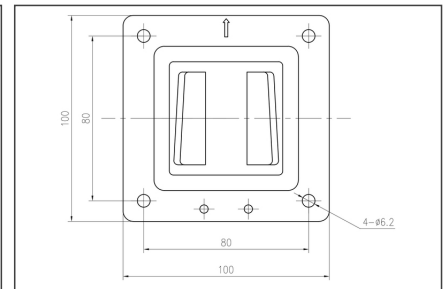
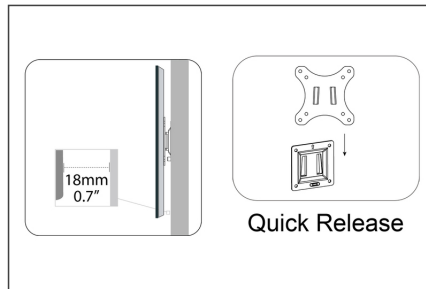
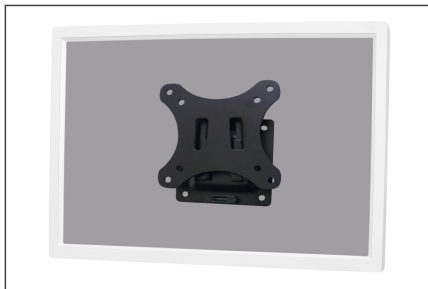
Package contents

- Suporte de parede para monitores
- Manual de instruções
- Parafusos para a montagem do monitor

Logistics						
	Number (pcs)	Weight (kg)	Depth (cm)	Width (cm)	Height (cm)	cm ³
Packaging Unit Carton	36	15.50	27.50	42.00	21.00	24,255.00
Packaging Unit Inside	1	0.43	15.00	13.00	2.50	487.50
Packaging Unit Single	1	0.43	15.00	13.00	2.50	487.50
Net single without Packaging	1	0.33	12.00	12.00	1.50	0.00

More images:





Safety notes

- Please read the entire manual before starting assembly and installation. Please contact your local dealer if you have any questions about the instructions or warnings.
- CAUTION: Use with products that exceed the permitted weight may result in damage or possible injury.
- Brackets should be fitted in accordance with the installation instructions. Incorrect installation can result in damage or injury.
- Use safety equipment and suitable tools. The product should only be installed by specialists.
- This product can be installed on timber-framed, solid concrete or stone walls.
- The load-bearing surfaces should be able to safely withstand the entire weight of appliances and all additional components.
- Only use the installation screws supplied and DO NOT TIGHTEN the screws TOO TIGHT.
- This product contains small parts that can cause a choking hazard if swallowed. Keep these parts away from children.
- Only use this product indoors. Using the product outdoors can lead to injuries and damage.
- IMPORTANT: Before installation, please check all components received against the components list. If parts are damaged or missing, ask your local dealer for replacement parts.
- MAINTENANCE: Check the bracket regularly for safety and stability (preferably every three months).

EU responsible person

EU based economic operator ensuring the product complies with the required regulations.

ASSMANN Electronic GmbH
 Auf dem Schüffel 3
 Lüdenscheid, Germany
<https://www.assmann.com>
info@assmann.com