

# DIGITUS Fiber Optic Singlemode Patch Cord, LC / ST

DK-2931-03  
EAN 4016032249351



**FO patch cord, duplex, LC to ST SM OS2 09/125 æ, 3 m**  
FO patch cord, duplex, LC to ST, SM OS2 09/125 µ, 3 m  
**Melhor desempenho e melhor qualidade de ligação com a rede.**

- LSOH

**Attributes**

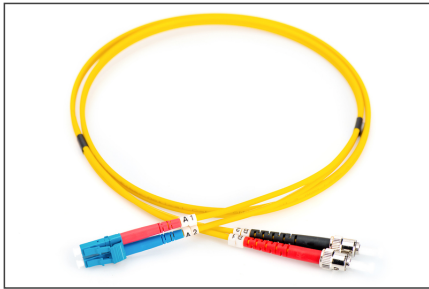
- Assortment: Fiber Optic Patch Cables
- Boot: single-color
- Cable diameter: 2 mm

- Cable type: I-VH 2E9/125µ
- Color cable: yellow
- Connector 1: LC
- Connector 2: ST
- Fiber class: OS2
- Fiber diameter: 9/125µ
- Mode: Singlemode
- Packaging: DIGITUS Polybag
- Length: 3 m

| Logistics                    |              |             |            |            |             |           |
|------------------------------|--------------|-------------|------------|------------|-------------|-----------|
|                              | Number (pcs) | Weight (kg) | Depth (cm) | Width (cm) | Height (cm) | cm³       |
| Packaging Unit Carton        | 120          | 8.40        | 41.00      | 41.00      | 28.00       | 47,068.00 |
| Packaging Unit Inside        | 15           | 1.05        | 19.00      | 19.00      | 12.00       | 4,332.00  |
| Packaging Unit Single        | 1            | 0.07        | 17.00      | 17.00      | 1.00        | 289.00    |
| Net single without Packaging | 1            | 0.07        | 15.00      | 15.00      | 1.00        | 0.00      |

**More images:**

|                     |                 |      |          |      |
|---------------------|-----------------|------|----------|------|
| Part No.            | DK-2931-03      |      |          |      |
| Lenght              | 3 m             |      |          |      |
| Cable Type          | Duplex SM 9/125 |      | OS2 LSZH |      |
|                     | END A           |      | END B    |      |
| Connector Type      | LC              |      | ST       |      |
| Insertion Loss (dB) | 0.07            | 0.08 | 0.08     | 0.05 |
| Return Loss (dB)    | 50.5            | 52.4 | 55.0     | 52.3 |
| Q.C.                | PASS            |      |          |      |

**Safety notes**

- Avoid direct contact with light sources: Fiber optic cables, especially those with active light sources such as lasers (e.g. in optical communication systems), can emit dangerous radiation that can damage
- eyes. Take care never to look directly into the light of an optical fiber, even if the light source is invisible to the naked eye.
- When working with fiber optic cables, especially during tests or when working with lasers, protective goggles should always be worn to protect against harmful radiation.
- When plugging and unplugging the cable, only grasp the plug and do not pull directly on the cable.
- Do not kink or crush: Fiber optic cables are sensitive to mechanical stress.
- To protect cables from physical damage, they should be laid in special ducts or with protective materials
- Keep cable connectors clean: Fiber optic cables are sensitive to dust and dirt. Even small particles on the connectors can severely impair the signal quality.
- Cables should not be used in environments with extremely high or very low temperatures. Observe the product information on the maximum operating temperature of the cable
- Check cables regularly for visible damage such as cracks, kinks or signs of wear. Defective cables should be replaced immediately.

**EU responsible person**

EU based economic operator ensuring the product complies with the required regulations.

ASSMANN Electronic GmbH  
Auf dem Schöffel 3  
Lüdenscheid, Germany  
<https://www.assmann.com>  
[info@assmann.com](mailto:info@assmann.com)