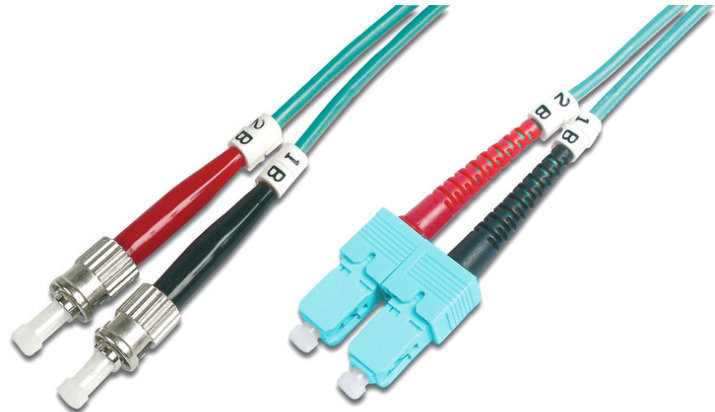


# DIGITUS Fiber Optic Multimode Patch Cord, OM 3, ST / SC

DK-2512-01/3  
 EAN 4016032248972



**FO patch cord, duplex, ST to SC MM OM3 50/125 μ, 1 m**  
 FO patch cord, duplex, ST to SC,MM OM3 50/125 μ, 1 m  
**Melhor desempenho e melhor qualidade de ligação com a rede.**

- LSOH

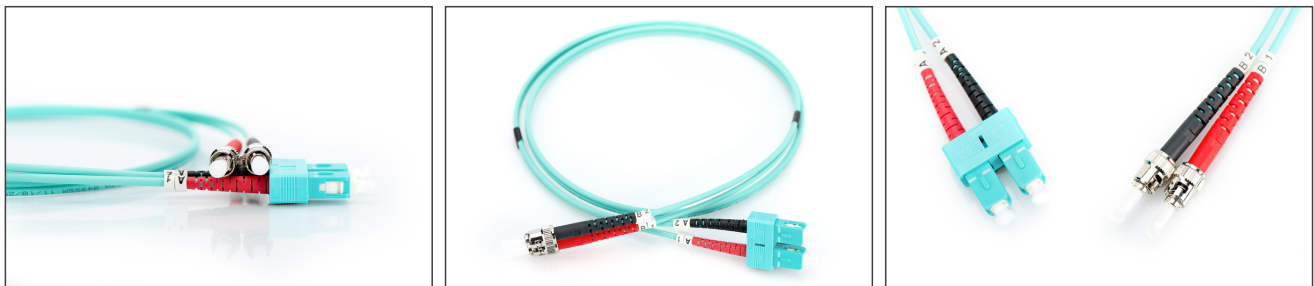
**Attributes**

- Assortment: Fiber Optic Patch Cables
- Boot: two-color
- Cable diameter: 2 mm

- Cable type: I-VH 2G50/125μ
- Color cable: aqua
- Connector 1: ST
- Connector 2: SC
- Fiber class: OM3
- Fiber diameter: 50/125μ
- Mode: Multimode
- Packaging: DIGITUS Polybag
- Length: 1 m

Logistics						
	Number (pcs)	Weight (kg)	Depth (cm)	Width (cm)	Height (cm)	cm³
Packaging Unit Carton	200	14.00	41.00	41.00	28.00	47,068.00
Packaging Unit Inside	25	1.75	19.00	19.00	12.00	4,332.00
Packaging Unit Single	1	0.07	17.00	17.00	1.00	289.00
Net single without Packaging	1	0.03	15.00	15.00	1.00	0.00

**More images:**



Part No.	DK-2512-01/3			
Lenght	1 m			
Cable Type	Duplex MM 50/125		OM3 LSZH	
	END A		END B	
Connector Type	ST		SC	
Insertion Loss (dB)	0.17	0.10	0.15	0.11
Return Loss (dB)	39.8	38.0	39.2	35.2
Q.C.	PASS			

**Safety notes**

- Avoid direct contact with light sources: Fiber optic cables, especially those with active light sources such as lasers (e.g. in optical communication systems), can emit dangerous radiation that can damage
- eyes. Take care never to look directly into the light of an optical fiber, even if the light source is invisible to the naked eye.
- When working with fiber optic cables, especially during tests or when working with lasers, protective goggles should always be worn to protect against harmful radiation.
- When plugging and unplugging the cable, only grasp the plug and do not pull directly on the cable.
- Do not kink or crush: Fiber optic cables are sensitive to mechanical stress.
- To protect cables from physical damage, they should be laid in special ducts or with protective materials
- Keep cable connectors clean: Fiber optic cables are sensitive to dust and dirt. Even small particles on the connectors can severely impair the signal quality.
- Cables should not be used in environments with extremely high or very low temperatures. Observe the product information on the maximum operating temperature of the cable
- Check cables regularly for visible damage such as cracks, kinks or signs of wear. Defective cables should be replaced immediately.

**EU responsible person**

EU based economic operator ensuring the product complies with the required regulations.

ASSMANN Electronic GmbH  
 Auf dem Schüffel 3  
 Lüdenscheid, Germany  
<https://www.assmann.com>  
[info@assmann.com](mailto:info@assmann.com)