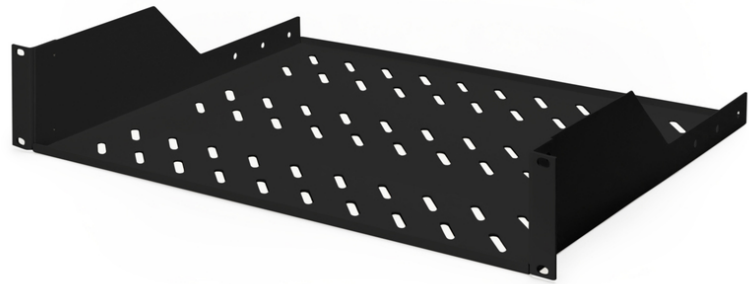


# DIGITUS Shelf for Fixed Installation in 483 mm (19") Cabinets

DN-19 TRAY-2-SW  
 EAN 4016032222613



**2U fixed shelf for racks from 450 mm depth 88x482x349 mm, up to 25 kg, black (RAL 9005)**

The shelves for fixed mounting can be installed easy on the two front 483 mm (19") profile rails of your 483 mm (19") network- or server cabinet. Due to their stable, perforated steel sheet with a high load capacity, they are the optimal surface for components which are not 483 mm (19") suitable.

- Montagem fixa
- inc. material de fixação

**Attributes**

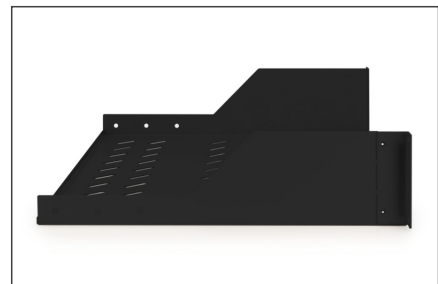
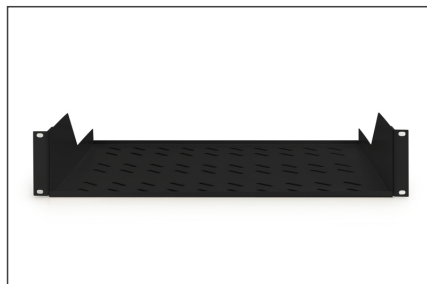
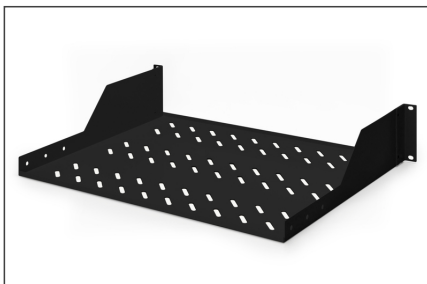
- Color: black, RAL 9005
- Load capacity: 25 kg
- Mounting type: Fixed mounting
- Units: 2
- Inch form factor (IEC 60297): 482.6 mm (19")
- Suitable cabinet depth: ≥ 450 mm

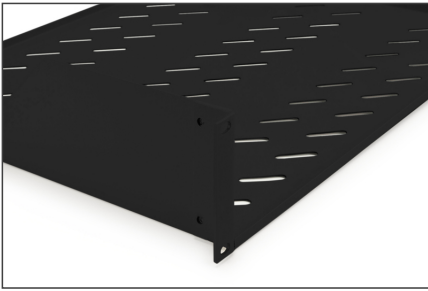
**Package contents**

- Installation set (screws, cage nuts, washers)

Logistics						
	Number (pcs)	Weight (kg)	Depth (cm)	Width (cm)	Height (cm)	cm <sup>3</sup>
Packaging Unit Carton	5	11.66	50.00	51.00	39.50	100,725.00
Packaging Unit Inside	1	2.33	49.30	27.40	9.50	12,832.80
Packaging Unit Single	1	2.33	38.00	51.50	9.50	18,591.50
Net single without Packaging	1	2.00	35.20	48.30	8.90	0.00

**More images:**



**Safety notes**

- When installing and using the accessory product for network cabinets, observe the respective safety instructions of the manufacturer or the cabinet system in which you want to use the accessory.

**EU responsible person**

EU based economic operator ensuring the product complies with the required regulations.

ASSMANN Electronic GmbH  
Auf dem Schüffel 3  
Lüdenscheid, Germany  
<https://www.assmann.com>  
[info@assmann.com](mailto:info@assmann.com)