

DIGITUS Kabel instalacyjny kat.6A, U/UTP, Dca, AWG 23/1, LSOH, 500m, niebieski, szpula

DK-1614-A-VH-5
EAN 4016032441885



Kabel instalacyjny DIGITUS kat.6A, U/UTP, Dca, AWG23/1, LSOH, 500m, niebieski, szpula

DIGITUS® Category 6A U-UTP installation cables are manufactured and tested to the ISO/IEC 11801, TIA/586-C.2 and EN 50173 Category 6A specifications. Every cord consists of 8 color coded AWG 23 polyethylene insulated conductors. The conductors are twisted together to form 4 pairs with varying lay lengths. Printing details along the outer sheath includes the brand name and item code. The cable is packed in a paper pullout box which makes the installation easy.

Future-oriented standards and high-end quality for your network.

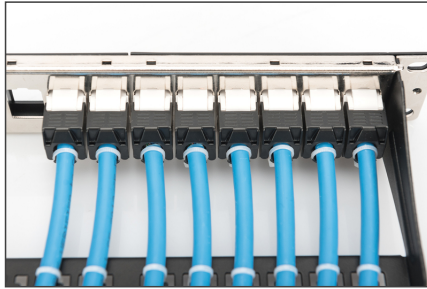
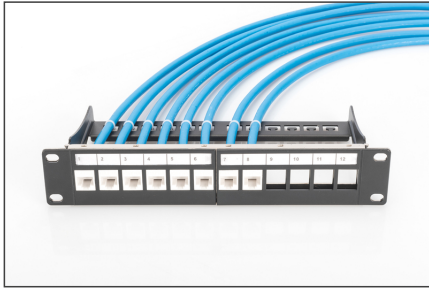
- Physical properties:
- Conductor: Bare annealed copper, olid AWG 23/1
- Insulation: HD-PE (High Density Polyethylene)
- Total number of insulated conductors: 8, twisted in 4 pairs
- Color code: Blue-white, orange-white, green-white, brown-white
- Individual pair shield: None
- Overall shielding: None
- Outer sheath: Dca to B2ca acc. to EN 50575; LSZH
- Outer sheath diameter (nominal): 0,5 mm (Eca); 0,6 mm (Dca); 1,2 mm (Cca); 1,4 mm (B2ca)
- Outer sheath color: Light blue (RAL 5012)
- Mechanical properties:
- Tensile loading: 150N max.
- Dynamic bending radius: 8x AD mm min.
- Static bending radius: 4x AD mm min.

- Shipping- and storage temperature range: -20 °C up to +60 °C
- Operating temperature range: -20 °C up to +75 °C
- Installation temperature range: 0 °C up to +50 °C
- Overall diameter Simplex (nominal): 7,1 mm (Eca); 7,3 mm (Dca); 7,4 mm (Cca); 7,6 mm (B2ca)
- Weight (kg/km): 53 kg (Eca); 54 kg (Dca); 55 kg (Cca); 56 kg (B2ca)
- Electrical properties:
- Impedance: 100±50Ω @ 1 - 600MHz
- Capacitance: 40 pF/m nominal @ 1 KHz
- Capacitance unbalance (pair-ground): 1.6 pF/m max. @ 1 KHz
- Insulation resistance: 5 GΩm x km min.
- DC loop resistance: 147 Ω/km max. (2% max. resistance unbalance)
- Voltage resistance: 72 Vdc max.
- Coupling attenuation: CA-Type 2
- Signal propagation delay: 450 nS/100 m max.
- Propagation delay: 10 nS/100 m max.
- Separating class: "c" acc. to EN 50174-2
- NVP: 70%
- Kategoria okablowania: Kat. 6A
- Typ ekranowania: U-UTP, nieekranowany
- CPR: Dca
- CPR: Dca
- Długość: 500 m
- Kolor: Jasnoniebieski
- Konstrukcja kabla: 4 x 2 AWG 23/1, skrętka drut
- Powłoka: LSOH

Logistyka

	Liczba (sztuki)	Waga (kg)	Głębokość (cm)	Szerokość (cm)	Wysokość (cm)	cm ³
Zewnętrzne opakowanie zbiorcze	1	27.50	50.00	50.00	22.00	55,000.00
Opakowanie wewnętrzne	1	27.50	50.00	50.00	22.00	55,000.00
Opakowanie jednostkowe	1	27.50	50.00	50.00	22.00	55,000.00
Netto bez opakowania	1	27.50	0.00	0.00	0.00	0.00

Więcej zdjęć



DIGITUS

ATP Evolution - Evolution of performance

B2+ - Cat6a 10Gbps
C_{ca} - Shielded
D_{ca} - Shielded
E_{ca} - Shielded

1+ - 10Gbps
3 - 10Gbps

S - Shielded
d - Shielded
a - Shielded

Interconnect - **C_{ca} s1a d1 a1**

DIGITUS

CAT 6A
CAT 6
CAT 5E
CAT 5
CAT 4

Compliance Statement

RoHS
REACH

intertek
ETL

UL

CE

DIGITUS

Leistungsparameter Transmission Properties

Model	ATP	ATP	ATP	ATP	ATP	ATP	ATP	ATP	ATP
1	1.2	1.2	1.2	1.2	1.2	1.2	1.2	1.2	1.2
2	1.2	1.2	1.2	1.2	1.2	1.2	1.2	1.2	1.2
3	1.2	1.2	1.2	1.2	1.2	1.2	1.2	1.2	1.2
4	1.2	1.2	1.2	1.2	1.2	1.2	1.2	1.2	1.2
5	1.2	1.2	1.2	1.2	1.2	1.2	1.2	1.2	1.2
6	1.2	1.2	1.2	1.2	1.2	1.2	1.2	1.2	1.2
7	1.2	1.2	1.2	1.2	1.2	1.2	1.2	1.2	1.2
8	1.2	1.2	1.2	1.2	1.2	1.2	1.2	1.2	1.2
9	1.2	1.2	1.2	1.2	1.2	1.2	1.2	1.2	1.2
10	1.2	1.2	1.2	1.2	1.2	1.2	1.2	1.2	1.2

DIGITUS

Produktinformation Product Information

Produktname	Produktbeschreibung	Physikalische Spezifikationen Physical Properties
DK-1614-A-VH-5	10Gbps Cat6a U/UTP Installation Cable, 500m, Simplex, D _{ca}	AWG 23/1, 500 MHz, 10 Gbit Ethernet, CAT 6A, 100 m, 200°C, LSZH, CPR class

DIGITUS

DK-1614-A-VH-5 // CAT 6_a U/UTP Installation Cable, 500m, Simplex, D_{ca}

Kabelquerschnitt
Cable cross section

Außenmantel Outer jacket
Adresspaare Contact pair
Cu/Al-UTP

DIGITUS

DK-1614-A-VH-5 // CAT 6_a U/UTP Installation Cable, 500m, Simplex, D_{ca}

Anwendungsbeispiel
Example of use

DK-1614 **DK-1614**

DIGITUS

CAT 6_A U/UTP Installation Cable, 500 m, Simplex, D_{ca}

AWG 23/1 **500 MHz** **10 Gbit Ethernet** **CAT 6_A**
100 m **200°C** **LSZH** **CPR class**