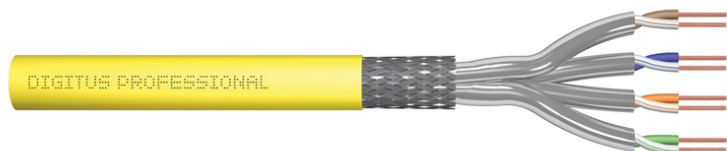


DIGITUS Cat. 7A class FA, S/FTP, Twisted Pair installation cable, 1000 m, simplex, 1500 MHz

DK-1744-A-VH-10-P
EAN 4016032462972



CAT 7A S-FTP installation cable, 1500 MHz Cca, AWG 22/1, 1000 m, SX, color yellow

The DIGITUS® Cat. 7A S/FTP installation cable features the following cable structure 4x2x AWG22/1 and achieves a transmission frequency of up to 1500 MHz. The halogen-free cable sheath complies with the standards IEC 60332-3-24, FRNC-C, LSZH-3 and BauPVO Euroclass Cca. The cable is suitable for structured building cabling in secondary and tertiary areas. Complies with the standards ISO/IEC 11801, DIN EN 50173, DIN EN 50288-9-1.

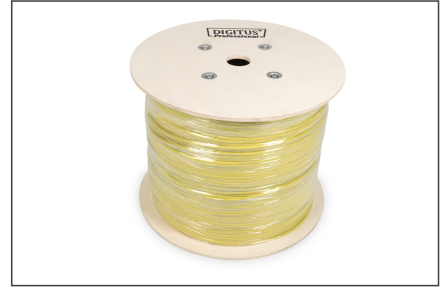
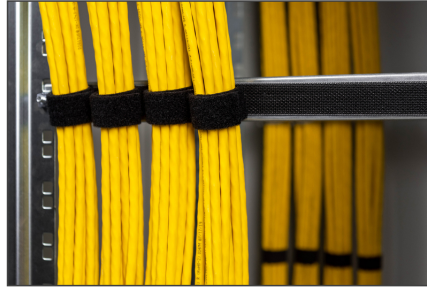
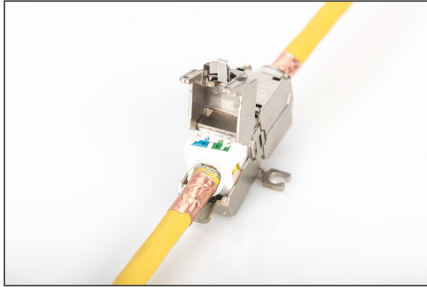
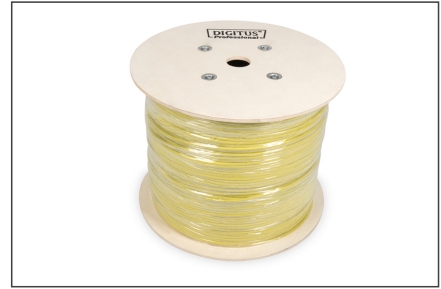
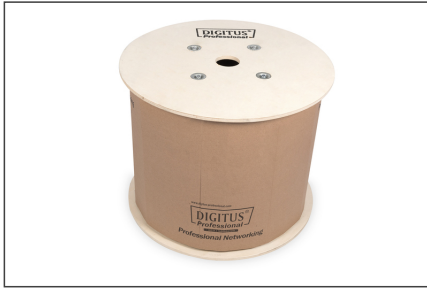
Future-oriented standards and high-end quality for your network.

- Physical properties
- Cable: Bare copper wire, AWG 22/1
- System/s of AVCP: AVCP 3
- Insulation: SFS-PE (foamed polyethylene sheath)
- Total number of insulated conductors: 8, twisted in 4 pairs
- Color code: Blue-white, orange-white, green-white, brown-white
- Shielding of the individual pairs: Aluminum-covered polyester film, 100% coverage
- Overall shielding: Copper mesh
- Outer sheath: Dca to CCA complies with EN 50575
- Outer sheath thickness (nominal): 0.60 mm (CCA)
- Outer sheath color: Sulfur yellow (RAL 1028)
- Mechanical properties
- Cable grip: 150 N max.
- Dynamic bending radius: 8x AD mm min.
- Static bending radius: 4x AD mm min.
- Transport and storage temperature range: -20 °C to +75 °C

- Operating temperature range: -20 °C to +60 °C
- Installation temperature range: 0 °C to +50 °C
- External diameter simplex (nominal): 8.0 mm (CCA)
- Weight (kg/km): 68.0 kg (CCA)
- Electrical properties
- Impedance: 100 ± 5 ohm @ 1-1000 MHz
- Capacity: 40 pF/m nominal @ 1 KHz
- Capacity unbalance (pair earth): 1.6 pF/m max. @ 1 KHz
- Insulation resistance: 5 Gohm x km min.
- DC resistance: 72 ohm/km max. (2% max. non-balanced resistance)
- Loop resistance: 147 ohm/km max. (2% max. non-balanced resistance)
- Operating voltage: 72 VDC max.
- Insertion loss: 80 dB
- Phase delay: 450 nS/100 m max.
- Signal delay: 10 nS/100 m max.
- Segregation classification: "d" in accordance with EN 50174-2
- NVP: 75%
- Assortiment: Getwist paar Installatiekabels
- Categorie: CAT 7A
- Afscherming: S-FTP, paren in metaalfolie- en vlechtscherming
- CPR: Cca
- Lengte: 1000 m
- Kleur: geel
- Mantel: LSOH
- Structuur: 4 x 2 AWG 22/1, massief getwist paar

Logistics						
	Number (pcs)	Weight (kg)	Depth (cm)	Width (cm)	Height (cm)	cm ³
Packaging Unit Carton	1	66.50	53.00	53.00	43.50	122,192.00
Packaging Unit Inside	1	66.50	53.00	53.00	43.50	122,192.00
Packaging Unit Single	1	66.50	53.00	53.00	43.50	122,192.00
Net single without Packaging	1	0.00	0.00	0.00	0.00	0.00

More images:



CAT 7_A S/FTP
Twisted Pair Installation Cable,
1000 m, Simplex, C_{ca}

AWG 22/24
1500 MHz
CAT 7
90° / 60°
LSZH
C_{ca} CPE class

DK-1744-A-VH-10P // CAT 7_A S/FTP Twisted Pair Installation Cable, 1000 m, Simplex, C_{ca}

Anwendungsbild
Example of use

DK-1744-A-VH-10P // CAT 7_A S/FTP Twisted Pair Installation Cable, 1000 m, Simplex, C_{ca}

Kabelquerschnitt
Cable cross section

Produktinformationen Product Information	Physikalische Spezifikationen Physical Properties
<p>Bezeichnung: CAT 7_A S/FTP Twisted Pair Installation Cable, 1000 m, Simplex, C_{ca}</p> <p>Part Number: DK-1744-A-VH-10P</p> <p>Hersteller: DIGITUS</p> <p>Produkttyp: CAT 7_A S/FTP Twisted Pair Installation Cable, 1000 m, Simplex, C_{ca}</p>	<p>Standard: ISO/IEC 61905-1-2:2018, ISO/IEC 61905-2:2018</p> <p>Material: Polyethylene (PE), Polypropylene (PP)</p> <p>Shielding: Foil Shield</p> <p>Conductor: Copper</p> <p>Insulation: Polyethylene</p>
<p>Elektrische Eigenschaften Electrical Properties</p> <p>Leistung: 1000 MHz</p> <p>Impedanz: 100 Ω</p> <p>Wellenlänge: 0,3 m</p>	<p>Mechanische Eigenschaften Mechanical Properties</p> <p>Spannung: 1000 V</p> <p>Temperaturbereich: -40 °C bis +75 °C</p> <p>Bestandteile: CAT 7_A S/FTP Twisted Pair Installation Cable, 1000 m, Simplex, C_{ca}</p>

Leistungseigenschaften Technical Properties

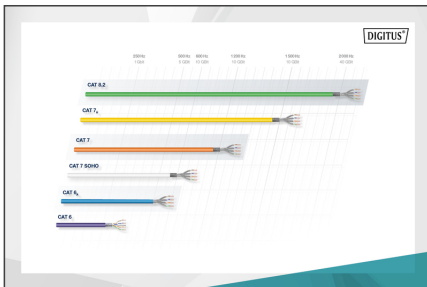
Parameter	Unit	Value
Frequency	MHz	1500
Impedance	Ω	100
Attenuation	dB/100m	20
Shielding	dB	100

GHMT PREMIUM Zertifikat
Nr. 1558742-20

Kategorie 7_A

Symmetrische Leiter, Kupfer, Kategorie 7_A

GHMT PREMIUM Zertifizierungsprogramm, GHMT PDP



DIGITUS

CFR System

B2ca (Cat 8.2) | **Cca** (Cat 7) | **D** (Cat 6) | **E** (Cat 5)

1+ (Cat 7 S/FTP) | **3** (Cat 6)

S (Shielded) | **d** (Unshielded) | **a** (Plastic)