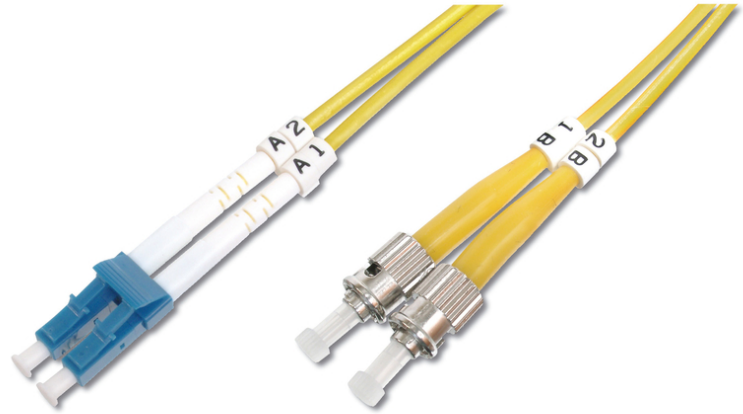


# DIGITUS LWL Singlemode Patchkabel, LC / ST

DK-2931-01  
EAN 4016032249337



**FO patch cord, duplex, LC to ST SM OS2 09/125 æ, 1 m**

FO patch cord, duplex, LC to ST, SM OS2 09/125 µ, 1 m

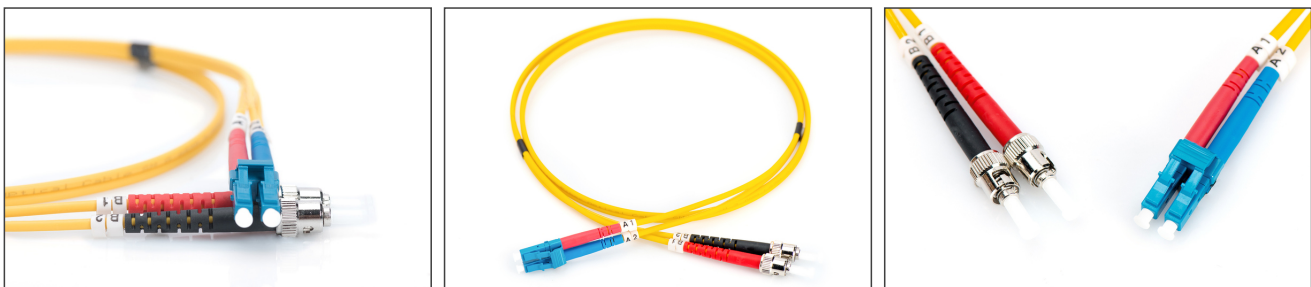
**Zeer goede prestaties en uitstekende kwaliteit van de aansluitingen van uw netwerk.**

- Duplexkabel
- LSOH
- Stekker met keramische ring
- Kabeldoorsnede 2 mm
- Per stuk verpakt met testrapport
- Assortiment: Glasvezel patchkabels

- Beschermkous: éénkleurig
- Connector 1: LC
- Connector 2: ST
- Kabelkleur: geel
- Kabeltype: I-VH 2E9/125 µ
- Modus: Enkele modus
- Verpakking: DIGITUS polybag
- Vezeldiameter: 9/125 µ
- Vezelklasse: OS2
- Lengte: 1 m

| Logistics                    |              |             |            |            |             |                 |
|------------------------------|--------------|-------------|------------|------------|-------------|-----------------|
|                              | Number (pcs) | Weight (kg) | Depth (cm) | Width (cm) | Height (cm) | cm <sup>3</sup> |
| Packaging Unit Carton        | 200          | 13.40       | 41.00      | 41.00      | 28.00       | 47,068.00       |
| Packaging Unit Inside        | 25           | 1.68        | 19.00      | 19.00      | 12.00       | 4,332.00        |
| Packaging Unit Single        | 1            | 0.07        | 17.00      | 17.00      | 1.00        | 289.00          |
| Net single without Packaging | 1            | 0.03        | 15.00      | 15.00      | 1.00        | 0.00            |

**More images:**



|                     |                 |      |          |      |
|---------------------|-----------------|------|----------|------|
| Part No.            | DK-2931-01      |      |          |      |
| Lenght              | 1 m             |      |          |      |
| Cable Type          | Duplex SM 9/125 |      | OS2 LSZH |      |
|                     | END A           |      | END B    |      |
| Connector Type      | LC              |      | ST       |      |
| Insertion Loss (dB) | 0.07            | 0.08 | 0.08     | 0.05 |
| Return Loss (dB)    | 50.5            | 52.4 | 55.0     | 52.3 |
| Q.C.                | PASS            |      |          |      |