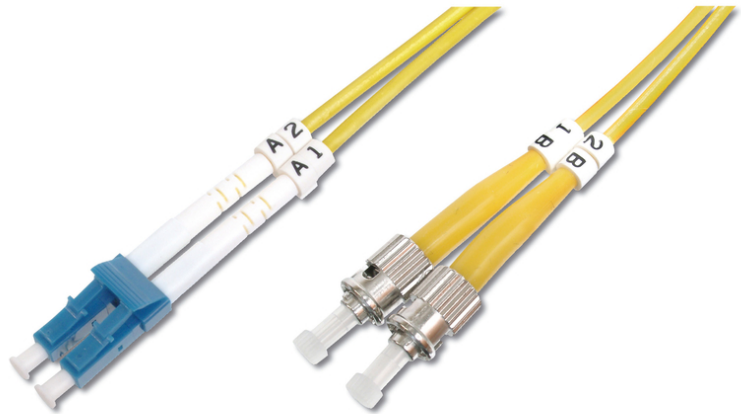


DIGITUS Cavo patch LWL monomodale, LC/ST

DK-2931-01
EAN 4016032249337



FO patch cord, duplex, LC to ST SM OS2 09/125 æ, 1 m

FO patch cord, duplex, LC to ST, SM OS2 09/125 µ, 1 m

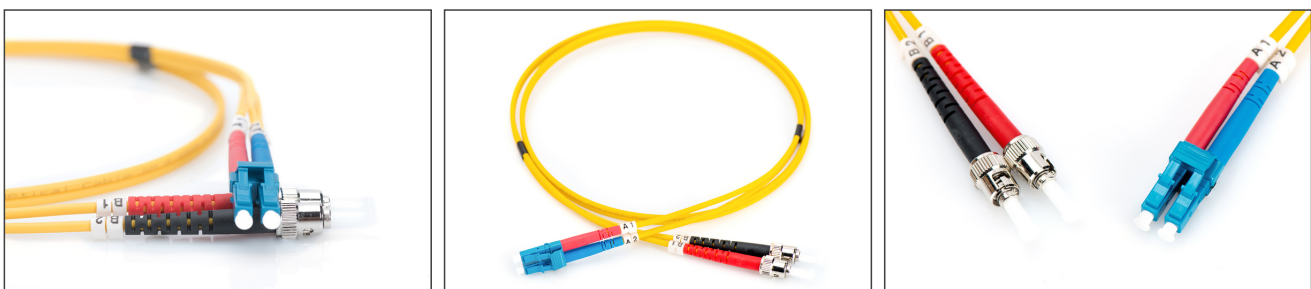
Le migliori prestazioni e qualità della connessione per la vostra rete.

- Cavo Duplex
- LSOH
- Spina con giunto in ceramica
- Diametro del cavo 2 mm
- Confezionate singolarmente con certificato di collaudo
- Assortimento: Cavi patch in fibra ottica

- Classe fibra: OS2
- Colore cavo: giallo
- Connettore 1: LC
- Connettore 2: ST
- Diametro della fibra: 9/125µ
- Imballaggio: Busta in plastica DIGITUS
- Modalità: Monomodale
- Protezione: monocoloro
- Tipo di cavo: I-VH 2E9/125µ
- Lunghezza: 1 m

| Logistics | | | | | | |
|------------------------------|--------------|-------------|------------|------------|-------------|-----------------|
| | Number (pcs) | Weight (kg) | Depth (cm) | Width (cm) | Height (cm) | cm ³ |
| Packaging Unit Carton | 200 | 13.40 | 41.00 | 41.00 | 28.00 | 47,068.00 |
| Packaging Unit Inside | 25 | 1.68 | 19.00 | 19.00 | 12.00 | 4,332.00 |
| Packaging Unit Single | 1 | 0.07 | 17.00 | 17.00 | 1.00 | 289.00 |
| Net single without Packaging | 1 | 0.03 | 15.00 | 15.00 | 1.00 | 0.00 |

More images:



| | | | | |
|---------------------|-----------------|------|----------|------|
| Part No. | DK-2931-01 | | | |
| Lenght | 1 m | | | |
| Cable Type | Duplex SM 9/125 | | OS2 LSZH | |
| | END A | | END B | |
| Connector Type | LC | | ST | |
| Insertion Loss (dB) | 0.07 | 0.08 | 0.08 | 0.05 |
| Return Loss (dB) | 50.5 | 52.4 | 55.0 | 52.3 |
| Q.C. | PASS | | | |