

DIGITUS® Cavo patch LWL multimodale, LC/ST

DK-2531-01

EAN 4016032249153



FO patch cord, duplex, LC to ST MM OM2 50/125 μ , 1 m

FO patch cord, duplex, LC to ST, MM OM2 50/125 μ , 1 m

Le migliori prestazioni e qualità della connessione per la vostra rete.

- Cavo Duplex
- LSOH
- Spina con giunto in ceramica
- Diametro del cavo 2 mm
- Confezionate singolarmente con certificato di collaudo

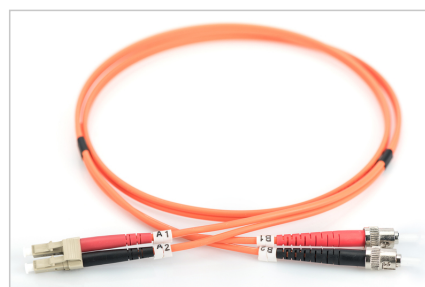
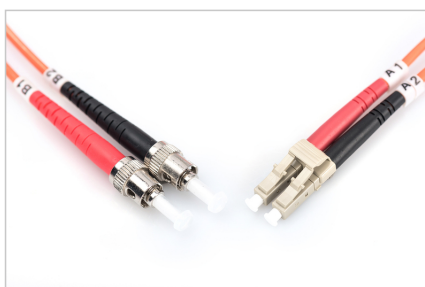
Attributes

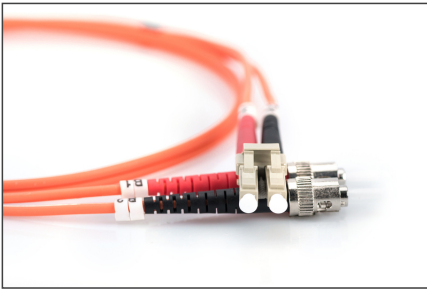
- Assortimento: Cavi patch in fibra ottica
- Classe fibra: OM2
- Colore cavo: arancione
- Connettore 1: LC
- Connettore 2: ST
- Diametro della fibra: 50/125 μ
- Imballaggio: Busta in plastica DIGITUS
- Modalità: Multimodale
- Protezione: bicolore
- Tipo di cavo: I-VH 2G50/125 μ
- Lunghezza: 1 m

Logistics						
	Number (pcs)	Weight (kg)	Depth (cm)	Width (cm)	Height (cm)	cm ³
Packaging Unit Carton	200	8.70	60.00	40.00	30.00	72,000.00
Packaging Unit Inside	10	0.44	38.00	35.00	7.00	9,310.00
Packaging Unit Single	1	0.04	28.00	20.00	1.50	840.00
Net single without Packaging	1	0.03	17.00	16.00	1.50	0.00

More images:

Part No.	DK-2531-01			
Lenght	1 m			
Cable Type	Duplex MM 50/125 OM2 LSZH			
	END A		END B	
Connector Type	LC		ST	
Insertion Loss (dB)	0.03	0.18	0.12	0.05
Return Loss (dB)	37.6	38.0	38.8	38.9
Q.C.	PASS			





EU responsible person

EU based economic operator ensuring the product complies with the required regulations.

ASSMANN Electronic GmbH
Auf dem Schüffel 3
Lüdenscheid, Germany
<https://www.assmann.com>
info@assmann.com