

DIGITUS Cat.6A U/UTP installation cable, 500 m, simplex, Dca

DK-1614-A-VH-5
EAN 4016032441885



CAT 6A U-UTP installation cable, 500 MHz Dca (EN 50575), AWG 23/1, 500 m drum, sx, blue

DIGITUS® Category 6A U-UTP installation cables are manufactured and tested to the ISO/IEC 11801, TIA/586-C.2 and EN 50173 Category 6A specifications. Every cord consists of 8 color coded AWG 23 polyethylene insulated conductors. The conductors are twisted together to form 4 pairs with varying lay lengths. Printing details along the outer sheath includes the brand name and item code. The cable is packed in a paper pullout box which makes the installation easy.

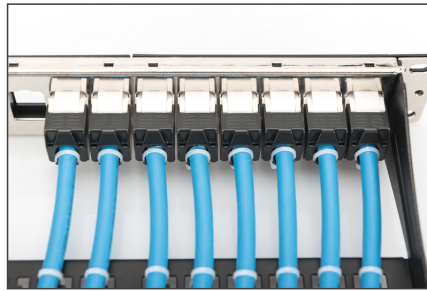
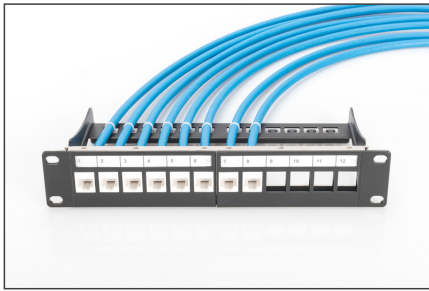
Future-oriented standards and high-end quality for your network.

- Physical properties:
- Conductor: Bare annealed copper, olid AWG 23/1
- Insulation: HD-PE (High Density Polyethylene)
- Total number of insulated conductors: 8, twisted in 4 pairs
- Color code: Blue-white, orange-white, green-white, brown-white
- Individual pair shield: None
- Overall shielding: None
- Outer sheath: Dca to B2ca acc. to EN 50575; LSZH
- Outer sheath diameter (nominal): 0,5 mm (Eca); 0,6 mm (Dca); 1,2 mm (Cca); 1,4 mm (B2ca)
- Outer sheath color: Light blue (RAL 5012)
- Mechanical properties:
- Tensile loading: 150N max.
- Dynamic bending radius: 8x AD mm min.
- Static bending radius: 4x AD mm min.

- Shipping- and storage temperature range: -20 °C up to +60 °C
- Operating temperature range: -20 °C up to +75 °C
- Installation temperature range: 0 °C up to +50 °C
- Overall diameter Simplex (nominal): 7,1 mm (Eca); 7,3 mm (Dca); 7,4 mm (Cca); 7,6 mm (B2ca)
- Weight (kg/km): 53 kg (Eca); 54 kg (Dca); 55 kg (Cca); 56 kg (B2ca)
- Electrical properties:
- Impedance: 100±50hm @ 1 - 600MHz
- Capacitance: 40 pF/m nominal @ 1 KHz
- Capacitance unbalance (pair-ground): 1.6 pF/m max. @ 1 KHz
- Insulation resistance: 5 GOhm x km min.
- DC loop resistance: 147 Ohm/km max. (2% max. resistance unbalance)
- Voltage resistance: 72 Vdc max.
- Coupling attenuation: CA-Type 2
- Signal propagation delay: 450 nS/100 m max.
- Propagation delay: 10 nS/100 m max.
- Separating class: "c" acc. to EN 50174-2
- NVP: 70%
- Categoría: CAT 6A
- Blindaje: U/UTP, sin blindaje
- CPR: Dca
- CPR: Dca
- Longitud: 500 m
- Color: azul claro
- Envoltura: LSOH
- Estructura: 4 x 2 AWG 23/1, par trenzado sólido

Logistics						
	Number (pcs)	Weight (kg)	Depth (cm)	Width (cm)	Height (cm)	cm³
Packaging Unit Carton	1	27.50	50.00	50.00	22.00	55,000.00
Packaging Unit Inside	1	27.50	50.00	50.00	22.00	55,000.00
Packaging Unit Single	1	27.50	50.00	50.00	22.00	55,000.00
Net single without Packaging	1	27.50	0.00	0.00	0.00	0.00

More images:



DIGITUS

ATZ-Einstellung (ATZ-Einstellung) **Verbindbarkeit** (Verbindbarkeit) **Leitungsverhalten (PSTN)** (Leitungsverhalten (PSTN)) **Leitungsverhalten (ISDN)** (Leitungsverhalten (ISDN)) **Leitungsverhalten (ISDN)** (Leitungsverhalten (ISDN))

B2_{ca} (B2_{ca}) **C_{ca}** (C_{ca}) **D_{ca}** (D_{ca}) **E_{ca}** (E_{ca})

1+ (1+) **3** (3)

C_{ca} (C_{ca}) **s1a** (s1a) **d1** (d1) **a1** (a1)

S (S) **d** (d) **a** (a)

DIGITUS

CAT 6A (CAT 6A) **CAT 6** (CAT 6) **CAT 7** (CAT 7) **CAT 7 SHIELD** (CAT 7 SHIELD) **CAT 6A** (CAT 6A) **CAT 6** (CAT 6)

Compliance Statement (Compliance Statement) **intertek** (intertek) **ETL** (ETL)

RoHS (RoHS) **REACH** (REACH) **CE** (CE) **UL** (UL)

RoHS (RoHS) **REACH** (REACH) **CE** (CE) **UL** (UL)

DIGITUS

Leitungsverhalten (ISDN) (Leitungsverhalten (ISDN))

MODE	ATZ	NEXT	PS NEXT	ACR	PS ACR	AL	SLRPT	PSLRPT
100	45	45	45	45	45	45	45	45
10	10	10	10	10	10	10	10	10
100	10	10	10	10	10	10	10	10
100	10	10	10	10	10	10	10	10
100	10	10	10	10	10	10	10	10
100	10	10	10	10	10	10	10	10
100	10	10	10	10	10	10	10	10
100	10	10	10	10	10	10	10	10
100	10	10	10	10	10	10	10	10

DIGITUS

Produktinformation Product Information (Produktinformation Product Information) **Physikalische Spezifikationen Physical Properties** (Physikalische Spezifikationen Physical Properties)

Parameter	Value	Parameter	Value
AWG	23/1	Shielding	None
Frequency	500 MHz	Temperature Range	-20°C to +75°C
Speed	10 Gbit Ethernet	LSZH	Yes
Class	CAT 6A	CPRI class	D _{ca}

DIGITUS

DK-1614-A-VH-S // CAT 6_A U/UTP Installation Cable, 500m, Simplex, D_{ca}

Kabelquerschnitt (Cable cross section) **Adressierte** (Addressed) **Color patch** (Color patch) **Colorful U/UTP** (Colorful U/UTP) **Adressierte** (Addressed) **Color patch** (Color patch)

DIGITUS

DK-1614-A-VH-S // CAT 6_A U/UTP Installation Cable, 500m, Simplex, D_{ca}

Anwendungsbeispiel (Example of use) **DK-3021L** (DK-3021L) **DK-3021L** (DK-3021L)

DIGITUS

AWG 23/1 (AWG 23/1) **500 MHz** (500 MHz) **10 Gbit Ethernet** (10 Gbit Ethernet) **CAT 6A** (CAT 6A) **100 m** (100 m) **20°C/+75°C** (20°C/+75°C) **LSZH** (LSZH) **D_{ca}** (D_{ca}) **CPRI class** (CPRI class)

CAT 6A U/UTP Installation Cable, 500m, Simplex, D_{ca}