

# DIGITUS Smart Full HD Doorbell Camera With PIR Motion Sensor, Battery Operation + Voice Control

DN-18650

EAN 4016032478843



## Smart Wi-Fi Camera Doorbell Camera

The weatherproof doorbell camera from DIGITUS® can be installed easily anywhere in your WLAN network and does not need an external power supply thanks to battery operation. The integrated PIR sensor reports movements in front of the camera directly on your smartphone in the form of push notifications. Thanks to the wide angle lens with 120° in razor-sharp Full HD resolution, you won't miss a single detail of what happens at your front door. Even in total darkness, the night vision mode delivers a clear view up to a distance of 10 m. Using voice control with Amazon Alexa and Google Assistant you can show the camera image on compliant Amazon and Google displays. The available microSD card slot can be used for cards up to 128 GB, so that recordings can be stored for longer periods and retrieved at any time. Thanks to two-way audio transmission, you can communicate with people in front of the camera. The live image from the camera and all settings can be easily viewed and set using the app, regardless of your location (mobile reception required). The wireless bell included in delivery can be configured with more than 60 different ringtones and even more can be added, this can be plugged into a free socket and connect to the bell camera at the press of a button. The bell camera is designed for a variety of applications, for example use on front doors, in hallways or entrances of any kind. Thanks to the bracket included in delivery, the weatherproof camera can be mounted securely and stably. Focus on safety and flexibility with the voice operated Full HD doorbell camera from DIGITUS®.

## Weatherproof Full HD Doorbell Camera with Wireless Bell, Two-Way Audio Transmission, Night Vision & PIR Motion Sensor – Compatible with Amazon Alexa + Google Assistant

- Specifications of doorbell camera:
- Video resolution: 1920 x 1080@15 BpS (Full HD)
- Video compression: MP4
- Lens: FOV: 120° viewing angle horizontal / 4 mm lens
- Sensor: 1/2.7" CMOS - 2 megapixel
- Night vision range: Up to 10 m
- Video streams: Mainstream 1920x1080p@15bps, 640x360@25bps
- Integrated speaker and microphone, microphone sensitivity: -38 dB

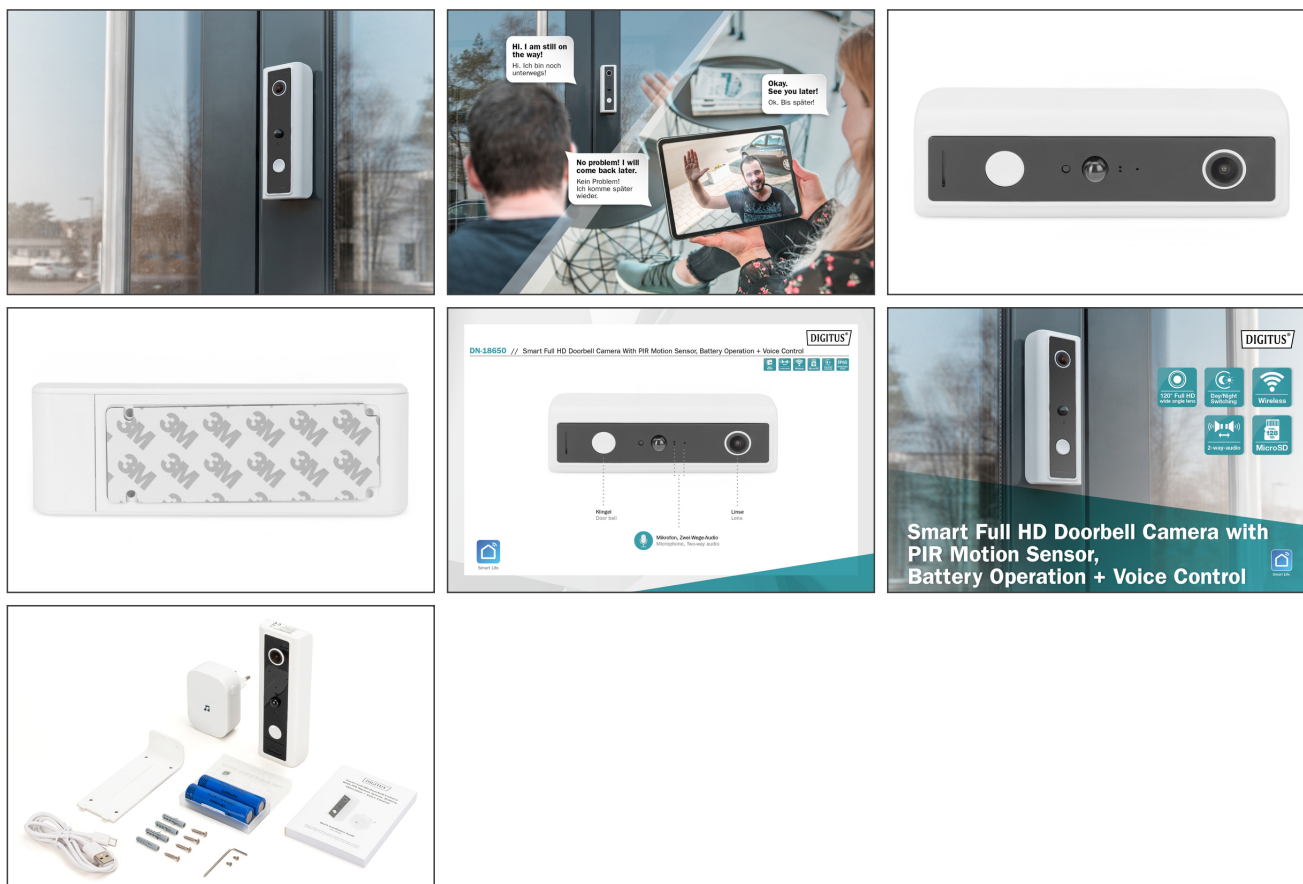
- Two-way audio communication / compression: AAC & G.726
- Connection type: Wireless LAN, 2.4 GHz
- With microSD card slot
- MicroSD card storage capacity: Up to 128 GB
- Supports cloud storage
- System requirements: iOS 10.0 / Android 5.0 or higher
- Power supply camera: 2 x 3.7 V DC, 2600/2500 mAh, 18650 lithium rechargeable battery
- Standby time: up to 180 days (depending on use)
- USB charging current: 5 V DC - Charging time: approx. 6 hours
- Operating temperature: -30 °C to +50 °C
- Operating humidity: < 80% RH (non-condensing)
- Protection type: IP66
- Dimensions: D 30 x W 46 x H 142 mm
- Weight: 200 g
- Color: Black / white
- Specifications of bell:
- More than 60 configurable ringtones + more can be added
- 4 different volume levels can be set
- Power supply bell: 90 - 260 V AC, 50-60 Hz, 0.15 W via Euro plug Type C (CEE 7/16)
- Power consumption standby: 10 mW
- Wireless connection between camera and bell: 433 MHz
- Sensitivity: -112 dBm
- Volume: up to 100 dB
- Dimensions: D 68 x W 51 x H 70 mm
- Weight: 57 g
- Color: White
- Note: The required batteries (18650) for the doorbell camera are included in the scope of delivery.

## Package contents

- 1 x Smart Full HD Doorbell Camera With PIR Motion Sensor, Battery Operation + Voice Control
- 1 x Wireless bell
- 1 x Mounting material
- 1 x Quick installation guide

Logistics						
	Number (pcs)	Weight (kg)	Depth (cm)	Width (cm)	Height (cm)	cm <sup>3</sup>
Packaging Unit Carton	30	2.76	40.00	40.00	40.00	64,000.00
Packaging Unit Inside	1	0.09	0.00	0.00	0.00	0.00
Packaging Unit Single	1	0.09	16.50	7.50	13.00	1,608.75
Net single without Packaging	1	0.20	3.00	4.60	14.20	0.00

#### More images:



#### Safety notes

- Do not open the appliance under any circumstances. It does not contain any serviceable parts. In the event of a fault, have the appliance checked and repaired by a specialist.
- For safety and approval reasons, the appliance must not be converted or modified.
- If you have any problems, please contact our customer service.
- Only use the device with the original power supply unit supplied.
- The appliance may only be connected to easily accessible sockets.
- In case of danger, pull out the mains plug.
- Only connect protection class I devices to properly earthed power sources.
- Only operate the appliance via a residual current circuit breaker (maximum 30 mA)
- Never touch the mains plug and socket with wet hands.
- Do not connect the device to cable reels
- The mains plug and coupling of an extension lead must be watertight and must not lie in water
- Always route cables to the appliance so that they do not pose a danger to people or animals.
- Only use the appliance within the specified temperature range.
- When you are not using the product, store it in a clean and dry place at temperatures between 0°C and 40°C
- During thunderstorms, there is a risk of overvoltage due to lightning strikes. Disconnect all connections to the device during thunderstorms.
- The device is not a toy! Keep the appliance out of the reach of children. Any packaging material lying around, such as plastic bags, foils or cushioning elements such as polystyrene, can be dangerous for children.
- Harsh cleaning agents or solvents can damage the product
- Disconnect the product from the power source before cleaning it.

- Use a lint-free cloth for cleaning.
- We accept no liability for damage to property or personal injury caused by improper handling of the appliance or failure to observe the hazard warnings.
- We accept no liability for consequential damage! In such cases, all warranty claims expire.

**EU responsible person**

EU based economic operator ensuring the product complies with the required regulations.

ASSMANN Electronic GmbH  
Auf dem Schüffel 3  
Lüdenscheid, Germany  
<https://www.assmann.com>  
[info@assmann.com](mailto:info@assmann.com)