

# DIGITUS Wall Mounting Cabinet 254 mm (10") - 312x400 mm (WxD)

DN-10-06U-4  
EAN 4016032466086



## 254 mm (10") 6U wall mounting cabinet 330x312x400 mm, color grey (RAL 7035)

Whether for private areas, office or sub-distribution units with limited space: With the compact 254 mm (10") solutions, you can install your network wherever you like. The wall housings available in three rack units (6 rack units, 9 rack units, 12 rack units) are equipped with a full glass door as well as a cable entry with brushes in the roof and floor. A pairs of galvanized 254 mm (10") profile rails labeled with easy-to-read rack units are installed on the inside. Their depth can be adjusted. Each cabinet is made of up to 1.5 mm thick sheet steel. Coloring is done with electrostatic powder coating in the standard colors gray (RAL 7035) or jet black (RAL 9005). The door hinges can be switched. Furthermore, the cabinets can be completely dismantled if necessary due to their collapsible design.

### The DIGITUS® Wall Mounting Cabinets are made for high demand IT-Infrastructure Solutions - designed and developed on highest standard in Germany

- Safety class rating IP20
- Lockable safety-glass door
- 200° door opening angle
- 1-point-locking-mechanism on the front door
- 254 mm (10") profile rails mounted on the front side inside of the cabinet, galvanized

- 254 mm (10") profile rails are adjustable in depth
- 1.1 - 1.5 strong sheet steel with a high loading capacity, powder coated
- Cable entry with brush strip on the top and with plastic cover on the base
- Ventilation slots for active and passive ventilation and exhausting
- Equipment mounting depth max.: 309 mm

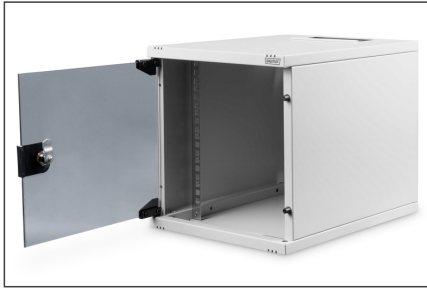
### Attributes

- Cabinet type: Wall mounting cabinet
- Color: light grey, RAL 7035
- Depth: 400 mm
- Front door: Glass door, single opening
- Load capacity: 30 kg
- Side panels: Both sides
- Units: 6
- Width: 312 mm
- IP protection class: IP20
- Mounted: yes

### Package contents

- Installation set (screws, cage nuts, washers)
- 2x Keys

Logistics						
	Number (pcs)	Weight (kg)	Depth (cm)	Width (cm)	Height (cm)	cm³
Packaging Unit Carton	1	9.50	46.00	37.00	39.00	66,378.00
Packaging Unit Inside	1	9.50	46.00	37.00	39.00	66,378.00
Packaging Unit Single	1	9.50	46.00	37.00	39.00	66,378.00
Net single without Packaging	1	8.20	40.00	31.20	33.00	0.00

**More images:****Safety notes**

- Ensure adequate ventilation to prevent the installed devices from overheating.
- Network cabinets should not be overfilled and the ventilation openings must not be blocked.
- Cables should be neatly routed and organized in cable ducts or trays.
- Use surge protection devices to protect sensitive devices from power surges or lightning strikes.
- Avoid moisture or wetness while observing the respective IP protection class.
- Ensure that the cabinet and the devices used are properly earthed.
- In regions with frequent thunderstorm activity, professional lightning protection should be integrated into the power supply.
- To avoid uneven loading, always mount the heaviest units at the bottom of the cabinet.
- Disconnect the installed devices from the power supply during maintenance or installation work.

**EU responsible person**

EU based economic operator ensuring the product complies with the required regulations.

ASSMANN Electronic GmbH  
Auf dem Schöffel 3  
Lüdenscheid, Germany  
<https://www.assmann.com>  
[info@assmann.com](mailto:info@assmann.com)