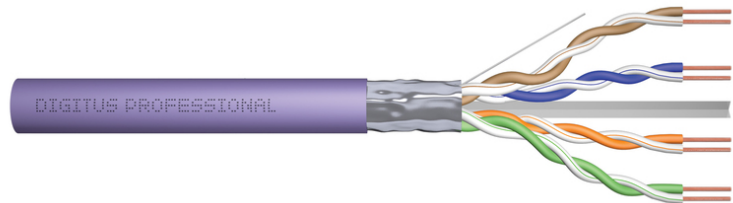


DIGITUS Cat.6 F/UTP installation cable, 500 m, simplex, Cca

DK-1625-VH-5
EAN 4016032442035



CAT 6 F-UTP installation cable, 250 MHz Cca (EN 50575), AWG 23/1, 500 m drum, sx, purple

The Digitus® Professional Cat.6 F/UTP installation cable is characterized by the following cable construction 4x2x AWG23/1 and reaches a transmission frequency up to 250 MHz. The halogen free cable jacket is conform to the standard IEC 60332-3-24, FRNC-C, LSZH-1 and CPR Euro class Cca. The cable is suitable for building structured cabling in the secondary and tertiary area. Compliant with the following standards ISO/IEC 11801, DIN EN 50173, DIN EN 50288-5-1.

Future-oriented standards and high-end quality for your network.

- Physical properties:
- Conductor: Bare annealed copper, solid AWG 23/1
- Insulation: HD-PE (High Density Polyethylene)
- Total number of insulated conductors: 8, twisted in 4 pairs
- Color code: Blue-white, orange-white, green-white, brown-white
- Individual pair shield: None
- Overall shielding: Aluminum foil, providing 100% coverage, drain wire
- Outer sheath: Eca to B2ca acc. to EN 50575; LSZH
- Outer sheath diameter (nominal): 0.5 mm (Eca); 0,6 mm (Dca); 0,8 mm (Cca); 0,08 mm (B2ca)
- Outer sheath color: Purple
- Mechanical properties:
- Tensile loading: 150N max.
- Dynamic bending radius: 8x AD mm min.
- Static bending radius: 4x AD mm min.
- Shipping- and storage temperature range: -20 °C up to +60 °C

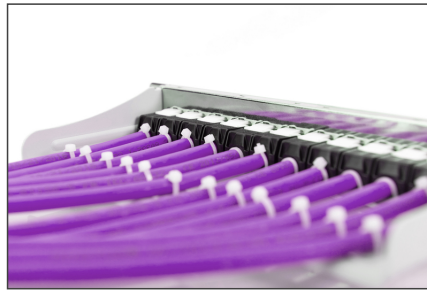
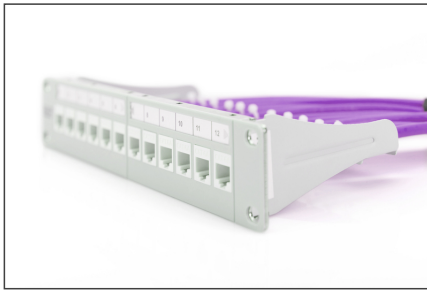
- Operating temperature range: -20 °C up to +75 °C
- Installation temperature range: 0 °C up to +50 °C
- Overall diameter Simplex (nominal): 7.0 (Eca); 7,2 mm (Dca); 7,6 mm (Cca); 7,6 mm (B2ca)
- Weight (kg/km): 46 kg (Eca); 47 kg (Dca); 48,5 kg (Cca); 48,5 kg (B2ca)
- Electrical properties:
- Impedance: 100±5 Ohm @ 1-250 MHz
- Capacitance: 45 pF/m nominal @ 800 Hz
- Capacitance unbalance (pair-ground): 1.5 pF/m max. @ 1 KHz
- Insulation resistance: 5 GOhm x km min.
- DC loop resistance: 147 Ohm/km max. (2% max. resistance unbalance)
- Voltage resistance: 72 Vdc max.
- Coupling attenuation: 40 dB
- Signal propagation delay: 535 nS/100 m max.
- Propagation delay: 20 nS/100 m max.
- Separating class: „c“ acc. to EN 50174-2
- NVP: 69%

Attributes

- Assortment: Twisted Pair Installation Cables
- Category: CAT 6
- Shielding: F-UTP, foil shielding
- CPR: Cca
- Length: 500 m
- Color: violet
- Jacket: LSOH
- Structure: 4 x 2 AWG 23/1, solid twisted pair

Logistics						
	Number (pcs)	Weight (kg)	Depth (cm)	Width (cm)	Height (cm)	cm³
Packaging Unit Carton	1	28.50	50.00	50.00	22.00	55,000.00
Packaging Unit Inside	1	28.50	0.00	0.00	0.00	0.00
Packaging Unit Single	1	28.50	50.00	50.00	22.00	55,000.00
Net single without Packaging	1	27.82	50.00	50.00	22.00	0.00

More images:



DK-1625-VH-5 // CAT 6 F/UTP Installation Cable, 500 m, Simplex, C_{ca}

Anwendungsbeispiel
Example of use

DK-1625-VH-5 // CAT 6 F/UTP Installation Cable, 500 m, Simplex, C_{ca}

Kabelquerschnitt
Cable cross section

Produktinformation Product Information

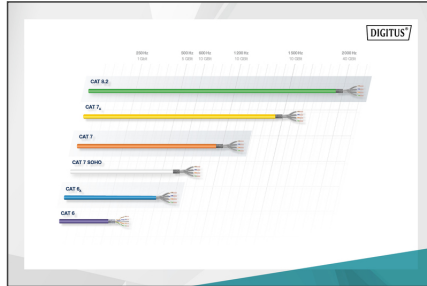
Hersteller: ASSMANN Electronic GmbH, Germany
 Artikelnummer: DK-1625-VH-5
 EAN: 4018951455555

Physikalische Spezifikationen Physical Properties

Leiter: 28
 Leitermaterial: Kupfer
 Leiterquerschnitt: 0,25 mm² (AWG 23/1)
 Leitermaterial: Kupfer
 Leiterquerschnitt: 0,25 mm² (AWG 23/1)
 Leitermaterial: Kupfer
 Leiterquerschnitt: 0,25 mm² (AWG 23/1)
 Leitermaterial: Kupfer
 Leiterquerschnitt: 0,25 mm² (AWG 23/1)

Leistungsleistungen Transmission Properties

AWG	AWG	AWG	AWG	AWG	AWG	AWG	AWG	AWG	AWG
16	18	20	22	24	26	28	30	32	34
16	18	20	22	24	26	28	30	32	34
18	20	22	24	26	28	30	32	34	36
20	22	24	26	28	30	32	34	36	38
22	24	26	28	30	32	34	36	38	40
24	26	28	30	32	34	36	38	40	42
26	28	30	32	34	36	38	40	42	44
28	30	32	34	36	38	40	42	44	46
30	32	34	36	38	40	42	44	46	48
32	34	36	38	40	42	44	46	48	50
34	36	38	40	42	44	46	48	50	52
36	38	40	42	44	46	48	50	52	54
38	40	42	44	46	48	50	52	54	56
40	42	44	46	48	50	52	54	56	58
42	44	46	48	50	52	54	56	58	60
44	46	48	50	52	54	56	58	60	62
46	48	50	52	54	56	58	60	62	64
48	50	52	54	56	58	60	62	64	66
50	52	54	56	58	60	62	64	66	68
52	54	56	58	60	62	64	66	68	70
54	56	58	60	62	64	66	68	70	72
56	58	60	62	64	66	68	70	72	74
58	60	62	64	66	68	70	72	74	76
60	62	64	66	68	70	72	74	76	78
62	64	66	68	70	72	74	76	78	80
64	66	68	70	72	74	76	78	80	82
66	68	70	72	74	76	78	80	82	84
68	70	72	74	76	78	80	82	84	86
70	72	74	76	78	80	82	84	86	88
72	74	76	78	80	82	84	86	88	90
74	76	78	80	82	84	86	88	90	92
76	78	80	82	84	86	88	90	92	94
78	80	82	84	86	88	90	92	94	96
80	82	84	86	88	90	92	94	96	98
82	84	86	88	90	92	94	96	98	100



CE-Kennzeichnung

CE, RoHS, REACH, WEEE, LFCE, LFCE 2, LFCE 3, LFCE 4, LFCE 5, LFCE 6, LFCE 7, LFCE 8, LFCE 9, LFCE 10, LFCE 11, LFCE 12, LFCE 13, LFCE 14, LFCE 15, LFCE 16, LFCE 17, LFCE 18, LFCE 19, LFCE 20, LFCE 21, LFCE 22, LFCE 23, LFCE 24, LFCE 25, LFCE 26, LFCE 27, LFCE 28, LFCE 29, LFCE 30, LFCE 31, LFCE 32, LFCE 33, LFCE 34, LFCE 35, LFCE 36, LFCE 37, LFCE 38, LFCE 39, LFCE 40, LFCE 41, LFCE 42, LFCE 43, LFCE 44, LFCE 45, LFCE 46, LFCE 47, LFCE 48, LFCE 49, LFCE 50, LFCE 51, LFCE 52, LFCE 53, LFCE 54, LFCE 55, LFCE 56, LFCE 57, LFCE 58, LFCE 59, LFCE 60, LFCE 61, LFCE 62, LFCE 63, LFCE 64, LFCE 65, LFCE 66, LFCE 67, LFCE 68, LFCE 69, LFCE 70, LFCE 71, LFCE 72, LFCE 73, LFCE 74, LFCE 75, LFCE 76, LFCE 77, LFCE 78, LFCE 79, LFCE 80, LFCE 81, LFCE 82, LFCE 83, LFCE 84, LFCE 85, LFCE 86, LFCE 87, LFCE 88, LFCE 89, LFCE 90, LFCE 91, LFCE 92, LFCE 93, LFCE 94, LFCE 95, LFCE 96, LFCE 97, LFCE 98, LFCE 99, LFCE 100



Safety notes

- Data cables must not be bent, stretched or twisted excessively. Sharp bends can damage the cable sheath and lead to failures or short circuits.
- Installation only by trained specialists.
- Installation only in dry rooms.
- The data cable must not be in direct contact with other electrical cables or high-voltage sources in order to avoid electromagnetic interference.

EU responsible person

EU based economic operator ensuring the product complies with the required regulations.
 ASSMANN Electronic GmbH
 Auf dem Schüffel 3
 Lüdenscheid, Germany
<https://www.assmann.com>
 info@assmann.com