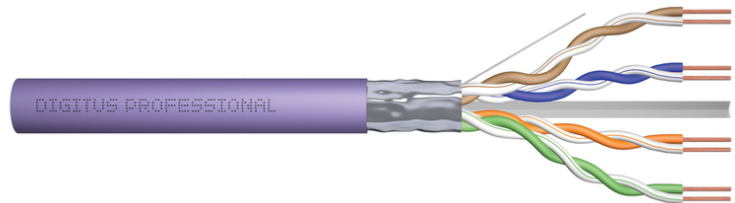


# DIGITUS Cat.6 F/UTP installation cable, 305 m, simplex, Dca

DK-1624-VH-305  
EAN 4016032441991



### CAT 6 F-UTP installation cable, 250 MHz, AWG 23/1 Dca (LSZH-1), 305 m, drum, simplex, purple

The Digitus Cat 6 F/UTP installation cable is designed for use in the structured data center and the building cabling according to ISO/IEC 11801, DIN EN 50288-5-1, DIN EN 50173, IEC 60332-1. The cable is perfectly suitable for the transmission of both analog and digital data and also supports POE and POE+.

#### Future-oriented standards and high-end quality for your network.

- Physical properties:
- Basic conductor: Solid AWG 23/1, bare annealed copper, diameter 0.57 mm nominal
- System/s of AVCP: AVCP 3
- Insulation: HD-PE
- Total number of insulated conductors: 8, twisted in 4 pairs
- Color code: blue-white, orange-white, green-white, brown-white
- Individual pair shield: None
- Overall shielding: Aluminum foil, providing 100% coverage, drain wire
- Outer jacket: Halogen-free (FRNC-B/LSZH-1)
- Outer jacket diameter: 0.50 mm nominal
- Color: Purple (RAL 4005)
- Mechanical properties:
- Tensile loading: 150N max.
- Dynamic bending radius: 8x AD mm min.
- Static bending radius: 4x AD mm min.
- Shipping- and storage temperature range: -20 °C up to +60 °C

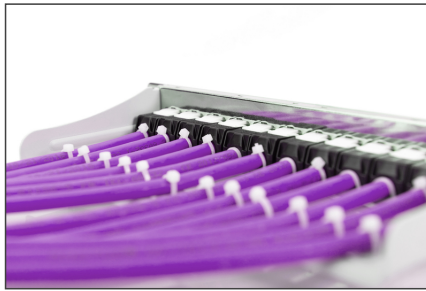
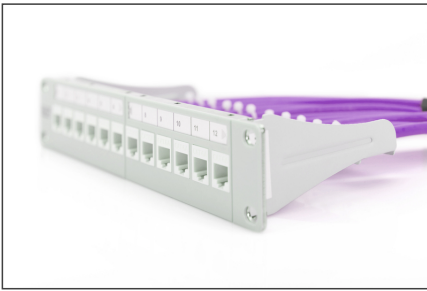
- Operating temperature range: -20 °C up to +75 °C
- Installation temperature range: 0 °C up to +50 °C
- Overall diameter: 7.0 mm nominal
- Flame retardancy: IEC 60332-1
- Halogen-free & smoke-proof: IEC 60754-2 & IEC 61034
- Fire load: 295 Mj/km
- Electrical properties:
- Mean impedance: 100±50Ωm at 1MHz - 600MHz
- Capacitance: 48 pF/m nominal @ 800 Hz
- Capacitance unbalance (pair-ground): 1.5 pF/m max. @ 1 KHz
- Insulation resistance: 5 GΩm x km min.
- DC loop resistance: 147 Ωm/km max. (2% max. resistance unbalance)
- Voltage resistance: 72 Vdc max.
- Coupling attenuation: 40 dB
- Signal propagation delay: 535 ns/100 m max.
- Propagation delay: 20 ns/100 m max.
- NVP: 69%

#### Attributes

- Assortment: Twisted Pair Installation Cables
- Category: CAT 6
- Shielding: F-UTP, foil shielding
- CPR: Dca
- Length: 305 m
- Color: violet
- Jacket: LSOH
- Structure: 4 x 2 AWG 23/1, solid twisted pair

Logistics						
	Number (pcs)	Weight (kg)	Depth (cm)	Width (cm)	Height (cm)	cm <sup>3</sup>
Packaging Unit Carton	1	19.00	39.50	38.00	27.50	41,277.50
Packaging Unit Inside	1	19.00	39.50	38.00	27.50	41,277.50
Packaging Unit Single	1	19.00	39.50	38.00	27.50	41,277.50
Net single without Packaging	1	0.00	0.00	0.00	0.00	0.00

More images:

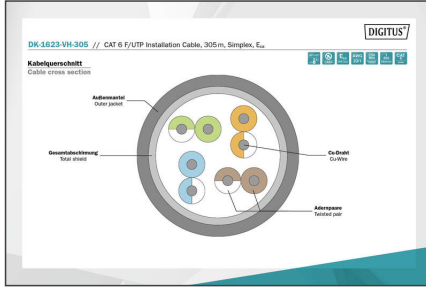


**CAT 6 F/UTP Installation Cable, 305 m, Simplex, E<sub>ca</sub>**

- AWG 23/1
- 250 MHz
- 1 Gbit Ethernet
- CAT 6
- 20°/1,75"
- 6
- LSZH
- E<sub>ca</sub> CPR class

DK.1623-VH-305 // CAT 6 F/UTP Installation Cable, 305m, Simplex, E<sub>ca</sub>

**Anwendungsbereich**  
Example of use:



Produktdaten Product Information		Physikalische Spezifikationen Physical Properties	
Hersteller Name	DIGITUS (Germany, DLR, DLR, DLR)	Leiter Material	100% Kupfer, 100% Kupfer
Hersteller Name	DIGITUS (Germany, DLR, DLR, DLR)	Leiter Material	100% Kupfer, 100% Kupfer
Hersteller Name	DIGITUS (Germany, DLR, DLR, DLR)	Leiter Material	100% Kupfer, 100% Kupfer
Hersteller Name	DIGITUS (Germany, DLR, DLR, DLR)	Leiter Material	100% Kupfer, 100% Kupfer

**Leistungsdaten Transmission Properties**

AWG	UTP	STP	PL	PL-UTP	PL-STP	PL-UTP	PL-STP	PL-UTP	PL-STP
23	45	45	45	45	45	45	45	45	45
22	50	50	50	50	50	50	50	50	50
21	55	55	55	55	55	55	55	55	55
20	60	60	60	60	60	60	60	60	60
19	65	65	65	65	65	65	65	65	65
18	70	70	70	70	70	70	70	70	70
17	75	75	75	75	75	75	75	75	75
16	80	80	80	80	80	80	80	80	80
15	85	85	85	85	85	85	85	85	85

ETL Verifier Certificate of Conformance Number: 16110268-CRT-616

**Intertek**

ETL Verifier Certificate of Conformance Number: 16110268-CRT-616

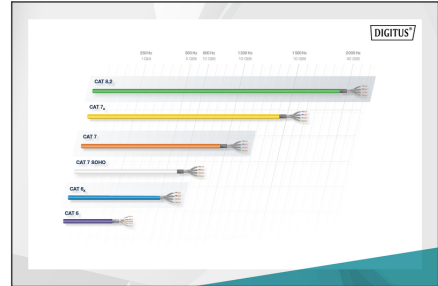
This certifies that the product, as presented, conforms to the applicable product standard(s) and/or specification(s) listed on this certificate.

Product Name: CAT 6 F/UTP Installation Cable

Model Number: DK.1623-VH-305

Manufacturer: DIGITUS (Germany, DLR, DLR, DLR)

Location: 100% Kupfer, 100% Kupfer



**CEP** (Common) / **CEP** (Common)

Bestandteile / Components

- B2ca** Silber hoch / Silver high
- Cca** Hoch / High
- Dca** Mittel / Middle
- Eca** Gerings / Low

Leistungsparameter (MHz) / Performance parameters (MHz)

Adaptieren der konfigurierbaren Details / Adapt the configurable details

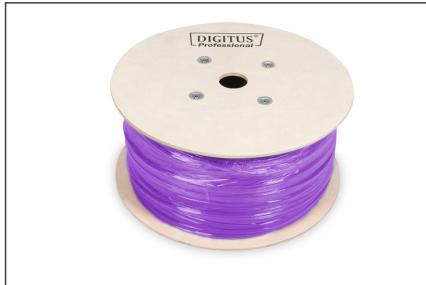
- 1+**
  - Spezifizierung / Specification
  - Spezifizierung / Specification
  - Spezifizierung / Specification
  - Spezifizierung / Specification
  - Spezifizierung / Specification
- 3**
  - Spezifizierung / Specification
  - Spezifizierung / Specification
  - Spezifizierung / Specification
  - Spezifizierung / Specification
  - Spezifizierung / Specification

Zusatzkonfiguration / Additional configuration

- s**
  - Spezifizierung / Specification
  - Spezifizierung / Specification
  - Spezifizierung / Specification
  - Spezifizierung / Specification
  - Spezifizierung / Specification
- d**
  - Spezifizierung / Specification
  - Spezifizierung / Specification
  - Spezifizierung / Specification
  - Spezifizierung / Specification
  - Spezifizierung / Specification
- a**
  - Spezifizierung / Specification
  - Spezifizierung / Specification
  - Spezifizierung / Specification
  - Spezifizierung / Specification
  - Spezifizierung / Specification

Bestandteile / Components

- Cca** **s1a** **d1** **a1**



Safety notes

- Data cables must not be bent, stretched or twisted excessively. Sharp bends can damage the cable sheath and lead to failures or short circuits.
- Installation only by trained specialists.
- Installation only in dry rooms.
- The data cable must not be in direct contact with other electrical cables or high-voltage sources in order to avoid electromagnetic interference.

**EU responsible person**

EU based economic operator ensuring the product complies with the required regulations.

ASSMANN Electronic GmbH  
Auf dem Schüffel 3  
Lüdenscheid, Germany  
<https://www.assmann.com>  
[info@assmann.com](mailto:info@assmann.com)