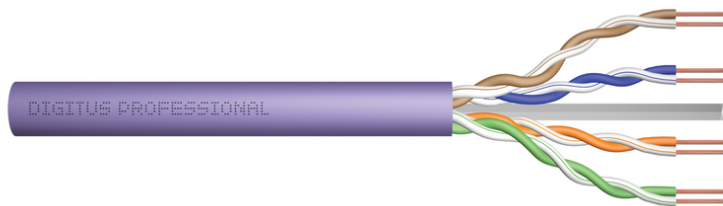


DIGITUS Cat.6 U/UTP installation cable, 305 m, simplex, Cca-s1a,d0,a1

DK-1615-VH-305
EAN 4016032435792



CAT 6 U-UTP installation cable, 250 MHz, AWG 23/1 Cca (LSZH-1), 305 m, Easy Pull Box, SX, Purple

The Digitus Cat 6 U/UTP installation cable is designed for use in the structured data center and the building cabling according to ISO/IEC 11801, DIN EN 50288-6-1, DIN EN 50173, IEC 60332-1. The cable is perfectly suitable for the transmission of both analog and digital data and also supports POE and POE+.

Future-oriented standards and high-end quality for your network.

- Physical properties:
- Conductor: Bare annealed copper, solid AWG 23/1
- System/s of AVCP: AVCP 3
- Insulation: HD-PE (High Density Polyethylene)
- Total number of insulated conductors: 8, twisted in 4 pairs
- Color code: Blue-white, orange-white, green-white, brown-white
- Individual pair shield: None
- Overall shielding: None
- Outer sheath: Eca to B2ca acc. to EN 50575; LSZH
- Outer sheath diameter (nominal): 0,5 mm (Eca); 0,6 mm (Dca); 1,0 mm (Cca); 1,0 mm (B2ca)
- Outer sheath color: Purple (RAL 4005)
- Mechanical properties:
- Tensile loading: 150N max.
- Dynamic bending radius: 8x AD mm min.
- Static bending radius: 4x AD mm min.
- Shipping- and storage temperature range: -20 °C up to +60 °C

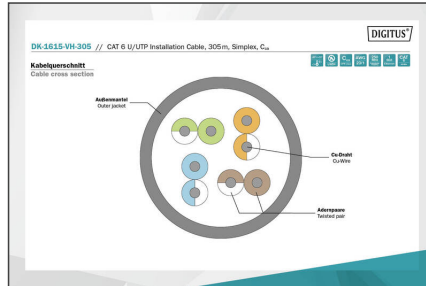
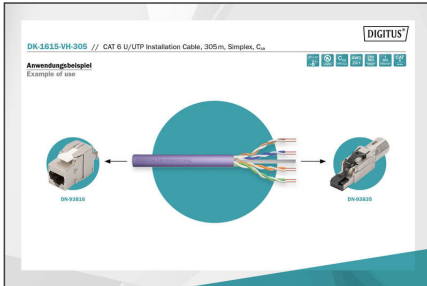
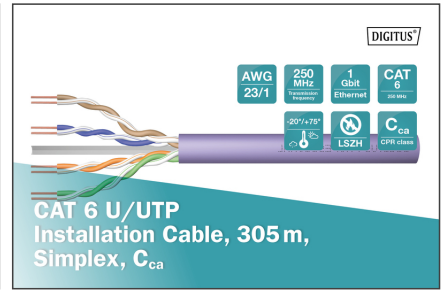
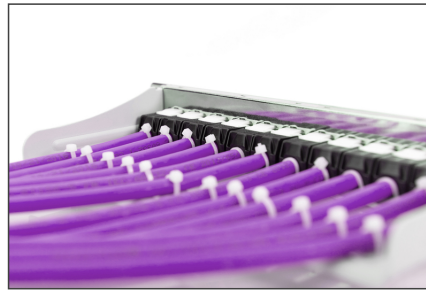
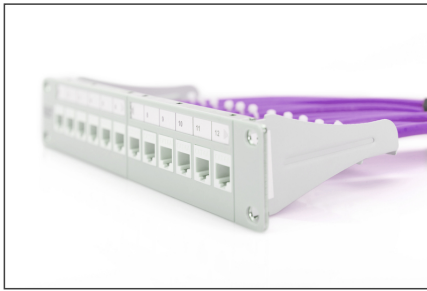
- Operating temperature range: -20 °C up to +75 °C
- Installation temperature range: 0 °C up to +50 °C
- Overall diameter Simplex (nominal): 6,1 mm (Eca); 6,3 mm (Dca); 6,8 mm (Cca); 6,8 mm (B2ca)
- Weight (kg/km): 41 kg (Eca); 42 kg (Dca); 44 kg (Cca); 44 kg (B2ca)
- Electrical properties:
- Impedance: 100±50Ωm @ 1 - 250MHz
- Capacitance: 40 pF/m nominal @ 800 Hz
- Capacitance unbalance (pair-ground): 1.5 pF/m max. @ 1 KHz
- Insulation resistance: 5 GΩm x km min.
- DC loop resistance: 147 Ωm/km max. (2% max. resistance unbalance)
- Voltage resistance: 72 Vdc max.
- Coupling attenuation: CA-Type 3
- Signal propagation delay: 535 nS/100 m max.
- Propagation delay: 20 nS/100 m max.
- Separating class: „b“ acc. to EN 50174-2
- NVP: 69%

Attributes

- Category: CAT 6
- Shielding: U-UTP, unshielded
- CPR: Cca
- Length: 305 m
- Color: violet
- Jacket: LSOH
- Structure: 4 x 2 AWG 23/1, solid twisted pair

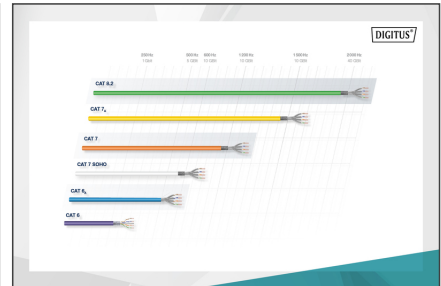
Logistics						
	Number (pcs)	Weight (kg)	Depth (cm)	Width (cm)	Height (cm)	cm ³
Packaging Unit Carton	1	14.60	42.00	26.50	40.00	44,520.00
Packaging Unit Inside	1	14.60	41.50	26.50	40.00	43,990.00
Packaging Unit Single	1	14.60	42.00	26.50	40.00	44,520.00
Net single without Packaging	1	0.00	0.00	0.00	0.00	0.00

More images:



Produktinformationen Product Information		Physikalische Spezifikationen Physical Properties	
Bezeichnung Name	DK-1615-VH-305 // CAT 6 U/UTP Installation Cable, 305m, Simplex, C _{ca}	Leiter Conductor	Beim Anschluss RJ45/UTP-Terminale ist ein minimaler Abstand von 10mm einzuhalten.
AWG	23/1	Leitungsdichte Cable Density	4/5/7/8/9/10/11/12/13
Frequenz	250 MHz	Leitungsdichte für 100-Meter-Phantomleitungen	1/2/3/4/5/6/7/8/9/10/11/12/13/14
Bandbreite	1 Gbit Ethernet	Netztrom	Kein Netz (keine AWG, kein Netz, kein Netz, kein Netz, kein Netz, kein Netz, kein Netz, kein Netz)
Kategorie	CAT 6	Leistungsdichte	1/2/3/4/5/6/7/8/9/10/11/12/13/14
Steuerung	200° +/- 75°	Leistungsdichte für 100-Meter-Phantomleitungen	1/2/3/4/5/6/7/8/9/10/11/12/13/14
Material	LSZH	Leistungsdichte für 100-Meter-Phantomleitungen	1/2/3/4/5/6/7/8/9/10/11/12/13/14
Flammverhalten	C Ca	Leistungsdichte für 100-Meter-Phantomleitungen	1/2/3/4/5/6/7/8/9/10/11/12/13/14
CE-Kennzeichnung	CE	Leistungsdichte für 100-Meter-Phantomleitungen	1/2/3/4/5/6/7/8/9/10/11/12/13/14

Leitungseigenschaften Transmission Properties											
AWG	AWG	AWG	AWG	AWG	AWG	AWG	AWG	AWG	AWG	AWG	AWG
16	16	16	16	16	16	16	16	16	16	16	16
18	18	18	18	18	18	18	18	18	18	18	18
20	20	20	20	20	20	20	20	20	20	20	20
22	22	22	22	22	22	22	22	22	22	22	22
24	24	24	24	24	24	24	24	24	24	24	24
26	26	26	26	26	26	26	26	26	26	26	26
28	28	28	28	28	28	28	28	28	28	28	28
30	30	30	30	30	30	30	30	30	30	30	30
32	32	32	32	32	32	32	32	32	32	32	32
34	34	34	34	34	34	34	34	34	34	34	34
36	36	36	36	36	36	36	36	36	36	36	36
38	38	38	38	38	38	38	38	38	38	38	38
40	40	40	40	40	40	40	40	40	40	40	40



CEP-Kategorie	Brandenormung	Leitungseigenschaften (AWG)	Leitungseigenschaften (AWG)	Leitungseigenschaften (AWG)	Leitungseigenschaften (AWG)	Leitungseigenschaften (AWG)
B2ca	Schürhohle	1+	1+	1+	1+	1+
Cca	Hohle	3	3	3	3	3
Dca	Mittel	3	3	3	3	3
Eca	Gewinde	3	3	3	3	3



Safety notes

- Data cables must not be bent, stretched or twisted excessively. Sharp bends can damage the cable sheath and lead to failures or short circuits.
- Installation only by trained specialists.
- Installation only in dry rooms.
- The data cable must not be in direct contact with other electrical cables or high-voltage sources in order to avoid electromagnetic interference.

EU responsible person

EU based economic operator ensuring the product complies with the required regulations.
 ASSMANN Electronic GmbH
 Auf dem Schüffel 3
 Lüdenscheld, Germany
<https://www.assmann.com>
info@assmann.com