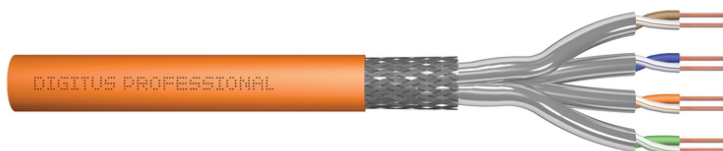


DIGITUS Cat.7 S/FTP installation cable, 100 m, simplex, Dca-s1a d1 a1

DK-1743-VH-1
EAN 4016032392101



CAT 7 S-FTP installation cable, 1200 MHz Dca (EN 50575), AWG 23/1, 100 m ring, SX, orange

The Digitus Cat 7 installation cable is designed for use in the structured data center and the building cabling according to ISO/IEC 11801, DIN EN 50288-4-1, DIN EN 50173, IEC 61156-7, EN 50288-9-1. The cable is perfectly suitable for the transmission of both analog and digital data and also supports POE and POE+. The shielding structure is composed of single shielded pairs with a tinned copper braid, which ensures excellent shielding and electrical values.

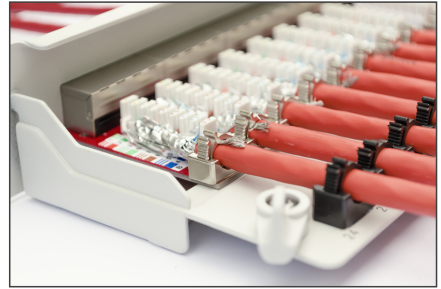
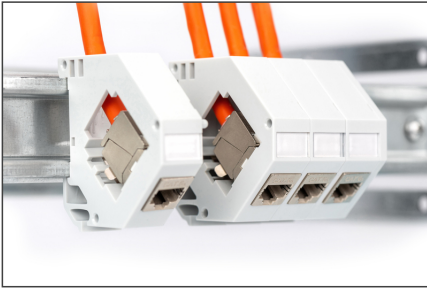
Future-oriented standards and high-end quality for your network.

- Physical properties:
- Conductor: Bare annealed copper, solid AWG 23/1
- System/s of AVCP: AVCP 3
- Insulation: SFS-PE (Foam-Skin Polyethylene)
- Total number of insulated conductors: 8, twisted in 4 pairs
- Color code: Blue-white, orange-white, green-white, brown-white
- Shielding of individual pairs: aluminum-clad polyester foil, covers 100%.
- Overall shielding: Copper braid
- Outer sheath: Dca- s2,d1,a1, acc. to EN 50575; LSZH
- Outer sheath diameter (nominal): 0,50 mm (Eca); 0,52 mm (Dca); 0,60 mm (Cca); 0,60 (B2ca)
- Color: Orange (RAL 2008)
- Mechanical properties:
- Tensile loading: 135N max.
- Dynamic bending radius: 8x AD mm min.
- Static bending radius: 4x AD mm min.
- Shipping- and storage temperature range: -20 °C up to +60 °C
- Operating temperature range: -20 °C up to +50 °C

- Installation temperature range: 0 °C up to +50 °C
- Overall diameter Simplex (nominal): 7,0 mm (Eca); 7,2 mm (Dca); 7,5 mm (Cca); 7,5 mm (B2ca)
- Weight (kg/km): 49,5 kg (Eca); 51 kg (Dca), 53 kg (Cca); 53 kg (B2ca)
- Electrical properties:
- Impedance: 100±15 Ohm @ 4 - 1000 MHz; 100±25 OHM @ 100-600 MHz
- Capacitance: 45 pF/m nominal @ 1 KHz
- Insulation resistance: 5 GOhm x km min.
- DC resistance: 95 Ohm/km max. (2% max. resistance unbalance)
- DC loop resistance: 190 Ohm/km max. (2% max. resistance unbalance)
- Voltage resistance: 72 Vdc max.
- Coupling attenuation: CA-Type 1b
- Signal propagation delay: 450 nS/100 m max.
- Propagation delay: 10 nS/100 m max.
- Separating class: "d" acc. to EN 50174-2
- NVP: 79%
- NVP: 79%
- Flame spread: EN 60332-1-2 (LSOH-PVC)
- Halogen-free, corrosiveness: EN 60754-1/2 (LSOH)
- Smoke density: EN 61034-2
- Assortment: Twisted Pair Installation Cables
- Category: CAT 7
- Shielding: S-FTP, pairs in metal foil and braid shielding
- CPR: Dca
- Length: 100 m
- Color: orange
- Jacket: LSOH
- Structure: 4 x 2 AWG 23/1, solid twisted pair

Logistics						
	Number (pcs)	Weight (kg)	Depth (cm)	Width (cm)	Height (cm)	cm ³
Packaging Unit Carton	1	5.16	33.00	33.00	11.00	11,979.00
Packaging Unit Inside	1	5.16	33.00	33.00	11.00	11,979.00
Packaging Unit Single	1	5.16	33.00	33.00	11.00	11,979.00
Net single without Packaging	1	0.00	33.00	33.00	11.00	0.00

More images:



DIGITUS

AWG 23/1 1200 MHz 10 Gbit Ethernet CAT 7 100m

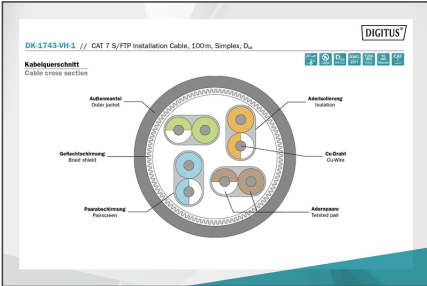
27° ± 50° LSZH Dca CPE class

CAT 7 S/FTP Installation Cable, 100m, Simplex, D_{ca}

DIGITUS

DK-1743-VH-1 // CAT 7 S/FTP Installation Cable, 100m, Simplex, D_{ca}

Anwendungsbeispiel
Example of use



DIGITUS

Produktdaten Product Information	Physikalische Spezifikationen Physical Properties
Bezeichnung / Part Number: DK-1743-VH-1 Hersteller / Manufacturer: DIGITUS Material / Material: PVC Farbe / Color: Orange Abmessungen / Dimensions: 100m x 12mm x 12mm	Leistungsfähigkeit / Performance: 10 Gbit Ethernet Temperaturbereich / Temperature Range: -10°C bis +60°C Flammverhalten / Flame Retardancy: LSZH Umweltverträglichkeit / Environmental Compatibility: Dca

DIGITUS

Leistungseigenschaften Transmission Properties

PROZ.	ATT.	NEZ.	PS-NEXT	AKN	PS-ACK	AK	PS-EXT	PS-EXT2
1	2	3	4	5	6	7	8	9

GHMT

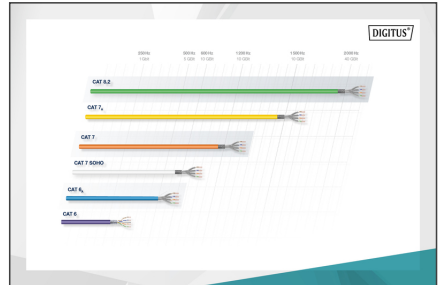
Certificate No. 191819-13-E
 Kategorie 7

Zertifikat Nr. 191819-13
 Kategorie 7

GHMT

Certificate No. 191819-21
 Klasse 5

Zertifikat Nr. 191819-21
 Klasse 5



DIGITUS

LFZ System
 Produktkategorie
 B2+
 Cca
 Dca
 Eca

Leistungseigenschaften
 Kategorie / Performance
 1+
 3

Abzeichen für verbindliche Tests
 Markierung / Marking
 s1a
 d1
 a1

