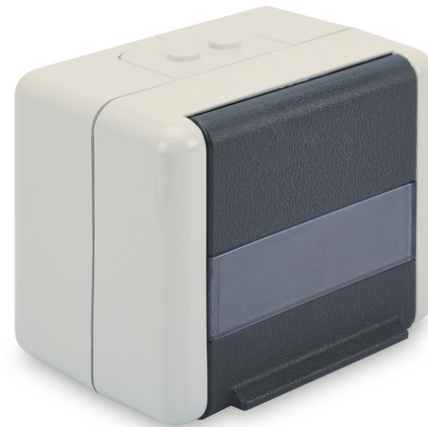


DIGITUS Outdoor Surface Mount Box for Keystone Modules, IP44 surface mount with hinged lid

DN-93844-OD
 EAN 4016032370857



Outdoor Mount Box for Keystone Modules, IP44, surface mount, optional inlet, for 2x keystones

The IP44 Wall Outlet (JUNG) for Keystone Modules convinces with an easy installation by screw mounting and a vertical outlet for data cables. The Keystone Module connections are covered by hinged lid. Individual Prints are possible with the integrated labeling field. The Mounting Inlet for the Wall Outlet is separately available (DN-93844-OD-1).

IP44 wall outlet for Keystone Modules

- Layout keystone entry: 90° outlet
- Area of application: Outdoor section, industrial sector
- Norms: ISO/IEC 11801 3rd Ed., EN 50173-1, EIA/TIA 568-C

- General properties:
 - Suitable for outdoor section and industrial sector usage, IP44
 - Integrated top cover
 - Plastic label field
 - Design compatible to current switch ranges of switch manufacturers
- Technical properties:
 - Wall outlet material: Thermoplast, ABS UL 94V-0
 - Top cover material: Thermoplast, ABS UL 94V-0
 - Inlet material: Thermoplast, ABS UL 94V-0
- Physical properties:
 - Operation temperature: -20° C to +70 °C (ISO/IEC 11801, EN 50173-1, ANSI/TIA/EIA 568 C)

| Logistics | | | | | | |
|------------------------------|--------------|-------------|------------|------------|-------------|----------|
| | Number (pcs) | Weight (kg) | Depth (cm) | Width (cm) | Height (cm) | cm³ |
| Packaging Unit Carton | 10 | 1.40 | 12.00 | 40.00 | 10.00 | 4,800.00 |
| Packaging Unit Inside | 1 | 0.14 | 11.50 | 9.00 | 9.00 | 931.50 |
| Packaging Unit Single | 1 | 0.14 | 11.50 | 9.00 | 9.00 | 931.50 |
| Net single without Packaging | 1 | 0.12 | 5.50 | 8.50 | 7.50 | 0.00 |

More images:



