

# DIGITUS Cat.6A U/UTP installation cable, 500 m, simplex, Eca

DK-1613-A-VH-5  
EAN 4016032344209



### CAT 6A U-UTP installation cable, 500 MHz Eca (EN 50575), AWG 23/1, 500 m drum, sx, blue

The Digitus Cat 6A U/UTP installation cable is designed for use in the structured data center and the building cabling according to ISO/IEC 11801, DIN EN 50288-11-1, DIN EN 50173, IEC 60332-1. The cable is perfectly suitable for the transmission of both analog and digital data and also supports POE and POE+.

#### Future-oriented standards and high-end quality for your network.

- Physical properties:
- Conductor: Bare annealed copper, solid AWG 23/1
- Insulation: HD-PE (High Density Polyethylene)
- Total number of insulated conductors: 8, twisted in 4 pairs
- Color code: Blue-white, orange-white, green-white, brown-white
- Individual pair shield: None
- Overall shielding: None
- Outer sheath: Eca to B2ca acc. to EN 50575; LSZH
- Outer sheath diameter (nominal): 0,5 mm (Eca); 0,6 mm (Dca); 1,2 mm (Cca); 1,4 mm (B2ca)
- Outer sheath color: Light blue (RAL 5012)
- Mechanical properties:
- Tensile loading: 150N max.
- Dynamic bending radius: 8x AD mm min.
- Static bending radius: 4x AD mm min.
- Shipping- and storage temperature range: -20 °C up to +60 °C
- Operating temperature range: -20 °C up to +75 °C

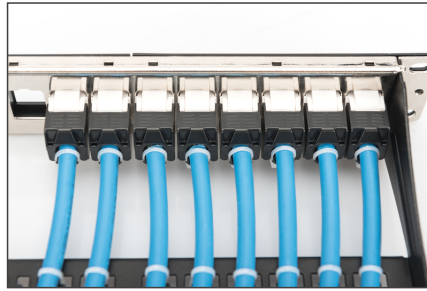
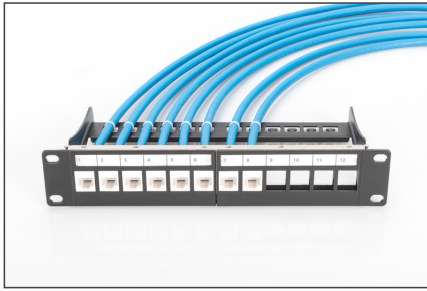
- Installation temperature range: 0 °C up to +50 °C
- Overall diameter Simplex (nominal): 7,1 mm (Eca); 7,3 mm (Dca); 7,4 mm (Cca); 7,6 mm (B2ca)
- Weight (kg/km): 53 kg (Eca); 54 kg (Dca); 55 kg (Cca); 56 kg (B2ca)
- Electrical properties:
- Impedance: 100±50Ω @ 1 - 600MHz
- Capacitance: 40 pF/m nominal @ 1 KHz
- Capacitance unbalance (pair-ground): 1.6 pF/m max. @ 1 KHz
- Insulation resistance: 5 GΩm x km min.
- DC loop resistance: 147 Ω/km max. (2% max. resistance unbalance)
- Voltage resistance: 72 Vdc max.
- Coupling attenuation: CA-Type 2
- Signal propagation delay: 450 nS/100 m max.
- Propagation delay: 10 nS/100 m max.
- Separating class: "c" acc. to EN 50174-2
- NVP: 70%

#### Attributes

- Assortment: Twisted Pair Installation Cables
- Category: CAT 6A
- Shielding: U-UTP, unshielded
- CPR: Eca
- Length: 500 m
- Color: light-blue
- Jacket: LSOH
- Structure: 4 x 2 AWG 23/1, solid twisted pair

Logistics						
	Number (pcs)	Weight (kg)	Depth (cm)	Width (cm)	Height (cm)	cm <sup>3</sup>
Packaging Unit Carton	1	27.50	50.00	50.00	22.00	55,000.00
Packaging Unit Inside	1	27.50	50.00	50.00	22.00	55,000.00
Packaging Unit Single	1	27.50	50.00	50.00	22.00	55,000.00
Net single without Packaging	1	0.00	0.00	0.00	0.00	0.00

More images:



**DIGITUS**

AWG 23/1  
500 MHz  
10 Gbit Ethernet  
CAT 6A  
20°/175°  
LSZH  
Eca  
CFR class

**CAT 6<sub>A</sub> U/UTP Installation Cable, 500m, Simplex, E<sub>ca</sub>**

**DIGITUS**

DK-1613-A-VH-5 // CAT 6, U/UTP Installation Cable, 500m, Simplex, E<sub>ca</sub>

**Anwendungsbild**  
Example of use

**DIGITUS**

DK-1613-A-VH-5 // CAT 6, U/UTP Installation Cable, 500m, Simplex, E<sub>ca</sub>

**Kabelquerschnitt**  
Cable cross section

**DIGITUS**

Produktdaten Product Information	Physikalische Spezifikationen Physical Properties
<b>Bestandteile Components</b> 1x 500m Cat 6 U/UTP Installation Cable, 500m, Simplex, Eca	<b>Material Material</b> Polyester, PVC, PE, PA, LSZH
<b>Technische Eigenschaften Technical Properties</b> Kategorie Category: CAT 6A Anwendung Application: Ethernet Leistung Power: 10 Gbit Ethernet Temperatur Temperature: 0°C - 60°C Lagerung Storage: 0°C - 60°C Transport Transport: 0°C - 60°C Verpackung Packaging: 1x 500m Lieferumfang Scope of delivery: 1x 500m	<b>Mechanische Eigenschaften Mechanical Properties</b> Kategorie Category: CAT 6A Anwendung Application: Ethernet Leistung Power: 10 Gbit Ethernet Temperatur Temperature: 0°C - 60°C Lagerung Storage: 0°C - 60°C Transport Transport: 0°C - 60°C Verpackung Packaging: 1x 500m Lieferumfang Scope of delivery: 1x 500m

**DIGITUS**

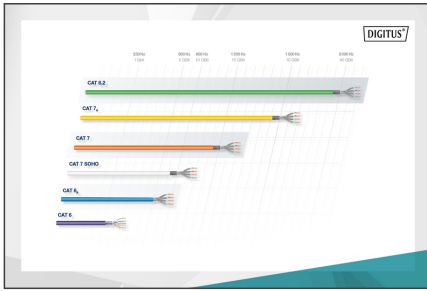
**Leitungsquerschnitt Transmission Properties**

PAIRS	AT	NEAT	PL NEXT	AN	PL AN	RL	ELNEXT	PL ELNEXT
1	17	16,1	16,1	16,1	16,1	16,1	16,1	16,1
10	17	16,1	16,1	16,1	16,1	16,1	16,1	16,1
20	17	16,1	16,1	16,1	16,1	16,1	16,1	16,1
30	17	16,1	16,1	16,1	16,1	16,1	16,1	16,1
40	17	16,1	16,1	16,1	16,1	16,1	16,1	16,1
50	17	16,1	16,1	16,1	16,1	16,1	16,1	16,1

**intertek**

ITS Verified Calibration Certificate Number: 1608020000000000

ITS Verified Calibration Certificate Number: 1608020000000000



**DIGITUS**

CFR Evaluation Performance class	Bestandteile Components	Leistungsfähigkeit (Gbps) Capacity of performance (Gbps)	Adaptation coefficient Index Ratio of the real-life body	Zustandstufen Status
B2ca	Hoch Hoch	1+	1	1
Cca	Hoch High	3	3	3
Dca	Mittel Medium	3	3	3
Eca	Niedrig Low	3	3	3

Safety notes

- Data cables must not be bent, stretched or twisted excessively. Sharp bends can damage the cable sheath and lead to failures or short circuits.
- Installation only by trained specialists.
- Installation only in dry rooms.
- The data cable must not be in direct contact with other electrical cables or high-voltage sources in order to avoid electromagnetic interference.

**EU responsible person**

EU based economic operator ensuring the product complies with the required regulations.

ASSMANN Electronic GmbH  
Auf dem Schüffel 3  
Lüdenscheid, Germany  
<https://www.assmann.com>  
[info@assmann.com](mailto:info@assmann.com)