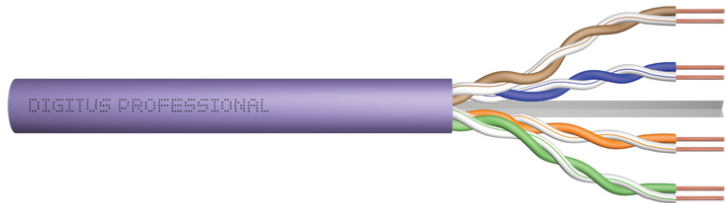


DIGITUS Cat.6 U/UTP installation cable, 500 m, Eca

DK-1613-VH-5
EAN 4016032343660



CAT 6 U-UTP installation cable, 250 MHz Eca (EN 50575), AWG 23/1, 500 m drum, sx, purple

The Digitus Cat 6 U/UTP installation cable is designed for use in the structured data center and the building cabling according to ISO/IEC 11801, DIN EN 50288-6-1, DIN EN 50173, IEC 60332-1. The cable is perfectly suitable for the transmission of both analog and digital data and also supports POE and POE+.

Future-oriented standards and high-end quality for your network.

- Physical properties:
- Conductor: Bare annealed copper, solid AWG 23/1
- System/s of AVCP: AVCP 3
- Insulation: HD-PE (High Density Polyethylene)
- Total number of insulated conductors: 8, twisted in 4 pairs
- Color code: Blue-white, orange-white, green-white, brown-white
- Individual pair shield: None
- Overall shielding: None
- Outer sheath: Eca to B2ca acc. to EN 50575; LSZH
- Outer sheath diameter (nominal): 0,5 mm (Eca); 0,6 mm (Dca); 1,0 mm (Cca); 1,0 mm (B2ca)
- Outer sheath color: Purple (RAL 4005)
- Mechanical properties:
- Tensile loading: 150N max.
- Dynamic bending radius: 8x AD mm min.
- Static bending radius: 4x AD mm min.
- Shipping- and storage temperature range: -20 °C up to +60 °C
- Operating temperature range: -20 °C up to +75 °C

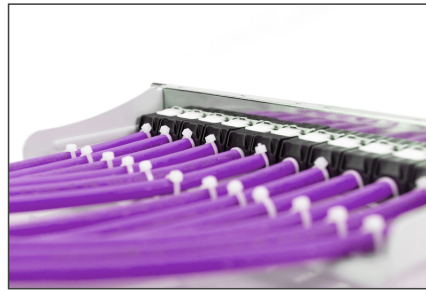
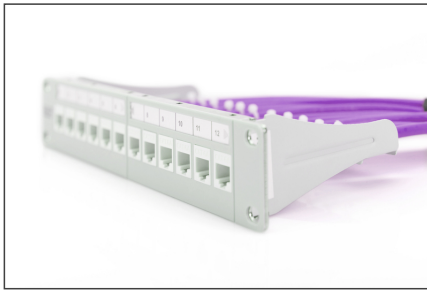
- Installation temperature range: 0 °C up to +50 °C
- Overall diameter Simplex (nominal): 6,1 mm (Eca); 6,3 mm (Dca); 6,8 mm (Cca); 6,8 mm (B2ca)
- Weight (kg/km): 41 kg (Eca); 42 kg (Dca); 44 kg (Cca); 44 kg (B2ca)
- Electrical properties:
- Impedance: 100±50Ω @ 1 - 250MHz
- Capacitance: 40 pF/m nominal @ 800 Hz
- Capacitance unbalance (pair-ground): 1.5 pF/m max. @ 1 KHz
- Insulation resistance: 5 GΩm x km min.
- DC loop resistance: 147 Ωm/km max. (2% max. resistance unbalance)
- Voltage resistance: 72 Vdc max.
- Coupling attenuation: CA-Type 3
- Signal propagation delay: 535 nS/100 m max.
- Propagation delay: 20 nS/100 m max.
- Separating class: „b“ acc. to EN 50174-2
- NVP: 69%

Attributes

- Assortment: Twisted Pair Installation Cables
- Category: CAT 6
- Shielding: U-UTP, unshielded
- CPR: Eca
- Length: 500 m
- Color: violet
- Jacket: LSOH
- Structure: 4 x 2 AWG 23/1, solid twisted pair

Logistics						
	Number (pcs)	Weight (kg)	Depth (cm)	Width (cm)	Height (cm)	cm³
Packaging Unit Carton	1	22.00	39.50	38.00	27.50	41,277.50
Packaging Unit Inside	1	22.00	0.00	0.00	0.00	0.00
Packaging Unit Single	1	22.00	37.00	37.00	31.00	42,439.00
Net single without Packaging	1	19.00	33.00	34.00	12.00	0.00

More images:



CAT 6 U/UTP Installation Cable, 500 m, Simplex, E_{ca}

DK-1613-VH-S // CAT 6 U/UTP Installation Cable, 500m, Simplex, E_{ca}

Anwendungsbeispiel
Example of use

DK-1613-VH-S // CAT 6 U/UTP Installation Cable, 500m, Simplex, E_{ca}

Kabelquerschnitt
Cable cross section

Produktdaten Product Information		Physikalische Spezifikationen Physical Properties	
Hersteller / Manufacturer	ASSMANN Electronic GmbH, 99074 Erfurt, Germany	Leiter / Conductor	25 x 0.125 mm² (AWG 23/1) Tinned Copper
Artikelnummer / Article Number	DK-1613-VH-S (100m) / DK-1613-VH-S (500m)	Isolierung / Insulation	LSZH (Low Smoke Zero Halogen)
Normen / Norms	ISO/IEC 11801 (Cat. 6), ISO/IEC 61905-1 (LSZH)	Bestandteile / Components	25 x 0.125 mm² (AWG 23/1) Tinned Copper, LSZH Jacket
Elektrische Eigenschaften Electrical Properties		Mechanische Eigenschaften Mechanical Properties	
Steuerung / Control	25 x 0.125 mm² (AWG 23/1)	Leitungsdämpfung / Attenuation	100 dB/100m
Bandbreite / Bandwidth	250 MHz	Bruchkraft / Tensile Strength	100 N
Übertragungsraten / Transmission Rates	10 Gbit/s (100m), 1 Gbit/s (500m)	Bruchdehnung / Elongation	10%
Steuerung / Control	25 x 0.125 mm² (AWG 23/1)	Bruchzeit / Break Time	100ms
Übertragungsraten / Transmission Rates	10 Gbit/s (100m), 1 Gbit/s (500m)	Bruchzeit / Break Time	100ms
Steuerung / Control	25 x 0.125 mm² (AWG 23/1)	Bruchzeit / Break Time	100ms
Übertragungsraten / Transmission Rates	10 Gbit/s (100m), 1 Gbit/s (500m)	Bruchzeit / Break Time	100ms

Leistungsleistungen Transmission Properties									
AWG	AWG	AWG	AWG	AWG	AWG	AWG	AWG	AWG	AWG
24	24	24	24	24	24	24	24	24	24
23	23	23	23	23	23	23	23	23	23
22	22	22	22	22	22	22	22	22	22
21	21	21	21	21	21	21	21	21	21
20	20	20	20	20	20	20	20	20	20
19	19	19	19	19	19	19	19	19	19
18	18	18	18	18	18	18	18	18	18
17	17	17	17	17	17	17	17	17	17
16	16	16	16	16	16	16	16	16	16

CE Konformität
CE Conformity

RoHS Konformität
RoHS Conformity

REACH Konformität
REACH Conformity

LFGB Konformität
LFGB Conformity

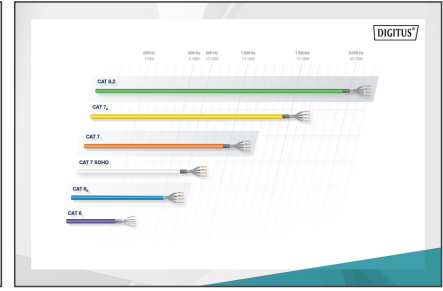
LFCE Konformität
LFCE Conformity

LFCE Konformität
LFCE Conformity

LFCE Konformität
LFCE Conformity

LFCE Konformität
LFCE Conformity

LFCE Konformität
LFCE Conformity



Safety notes

- Data cables must not be bent, stretched or twisted excessively. Sharp bends can damage the cable sheath and lead to failures or short circuits.
- Installation only by trained specialists.
- Installation only in dry rooms.
- The data cable must not be in direct contact with other electrical cables or high-voltage sources in order to avoid electromagnetic interference.

EU responsible person

EU based economic operator ensuring the product complies with the required regulations.

ASSMANN Electronic GmbH
Auf dem Schüffel 3
Lüdenscheid, Germany
<https://www.assmann.com>
info@assmann.com