

# DIGITUS Modular Patch Panel for Keystone Jack 1U Rack Mount - Unloaded

DN-91411-LF  
EAN 4016032338543



**Modular Patch Panel, shielded, 24-port blank, 1U, Rack Mount, transp. label field, black**

DIGITUS® modular patch panel are specially designed for 19" rack installation and for mounting DIGITUS® keystone jacks. The modular patch panel is available in two different colors, grey RAL 7035 and black RAL 9005. The material consists of SPCC, 1.55 mm cold-rolled carbon steel in compliance with JIS G3141-1996. The front part of the modular patch panel is manufactured of ABS High-Impact UL-94V-0. The rear management tray with special designed cable tie positions, is delivered as snapping in tool for simple installation. An earthing kit is also supplied with the modular patch panel.

- Compatible with DIGITUS® CAT5e, CAT6 & CAT6A jacks

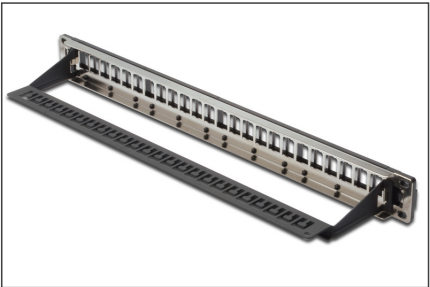
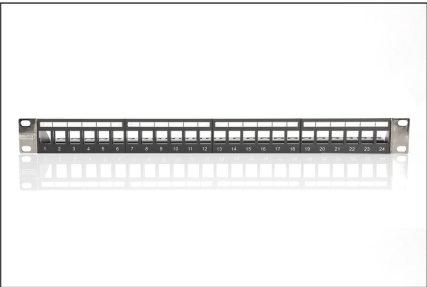
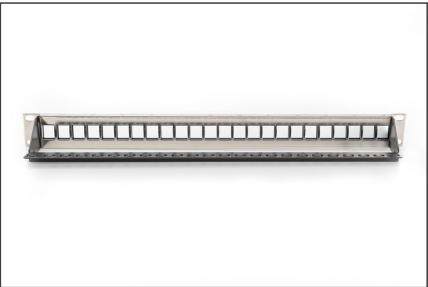
- Part or fully load
- Compatible with DIGITUS® shielded and unshielded jacks
- Available in grey and black color
- Modular version is perfect for pre-terminated and standard installations
- Delivered with rear management tray
- Operating temperature range: -20 to +75 °C
- Transparent label fields

**Attributes**

- Color: black, RAL 9005
- Ports: 24
- Units: 1

Logistics						
	Number (pcs)	Weight (kg)	Depth (cm)	Width (cm)	Height (cm)	cm³
Packaging Unit Carton	10	7.70	31.00	54.00	28.00	46,872.00
Packaging Unit Inside	1	0.77	12.00	52.00	5.00	3,120.00
Packaging Unit Single	1	0.77	12.00	52.00	5.00	3,120.00
Net single without Packaging	1	0.50	9.30	48.30	4.50	0.00

**More images:**



**Safety notes**

- Protect product from moisture

**EU responsible person**

EU based economic operator ensuring the product complies with the required regulations.

ASSMANN Electronic GmbH  
Auf dem Schüffel 3  
Lüdenscheid, Germany  
<https://www.assmann.com>  
[info@assmann.com](mailto:info@assmann.com)