

# DIGITUS Fiber Optic Multimode Patch Cord, OM 3, ST / ST

DK-2511-05/3  
 EAN 4016032248309



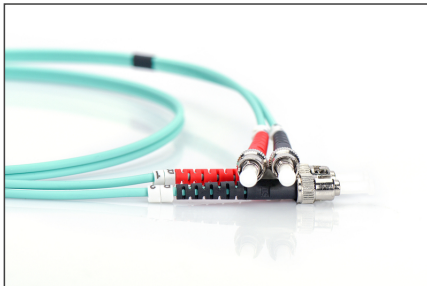
**FO patch cord, duplex, ST to ST MM OM3 50/125  $\mu$ , 5m**  
 FO patch cord, duplex, ST to ST,MM OM3 50/125  $\mu$ , 5m  
**Future-oriented standards and high-end quality for your network.**

- Duplex cable
- LSOH
- Connector with ceramic ferrule
- Cable diameter 2 mm
- Single packed with test-report

- Boot: two-color
- Color cable: aqua
- Connector 1: ST
- Connector 2: ST
- Fiber class: OM3
- Fiber diameter: 50/125 $\mu$
- Mode: Multimode
- Length: 5 m

| Logistics                    |              |             |            |            |             |                 |
|------------------------------|--------------|-------------|------------|------------|-------------|-----------------|
|                              | Number (pcs) | Weight (kg) | Depth (cm) | Width (cm) | Height (cm) | cm <sup>3</sup> |
| Packaging Unit Carton        | 80           | 4.96        | 41.00      | 41.00      | 28.00       | 47,068.00       |
| Packaging Unit Inside        | 10           | 0.62        | 19.00      | 19.00      | 12.00       | 4,332.00        |
| Packaging Unit Single        | 1            | 0.06        | 17.00      | 17.00      | 1.20        | 346.80          |
| Net single without Packaging | 1            | 0.08        | 15.00      | 15.00      | 1.20        | 0.00            |

**More images:**



|                     |                  |      |          |      |
|---------------------|------------------|------|----------|------|
| Part No.            | DK-2511-05/3     |      |          |      |
| Lenght              | 5 m              |      |          |      |
| Cable Type          | Duplex MM 50/125 |      | OM3 LSZH |      |
|                     | END A            |      | END B    |      |
| Connector Type      | ST               |      | ST       |      |
|                     | ST               |      | ST       |      |
| Insertion Loss (dB) | 0.09             | 0.05 | 0.16     | 0.15 |
| Return Loss (dB)    | 39.0             | 39.7 | 36.5     | 36.9 |
| Q.C.                | PASS             |      |          |      |