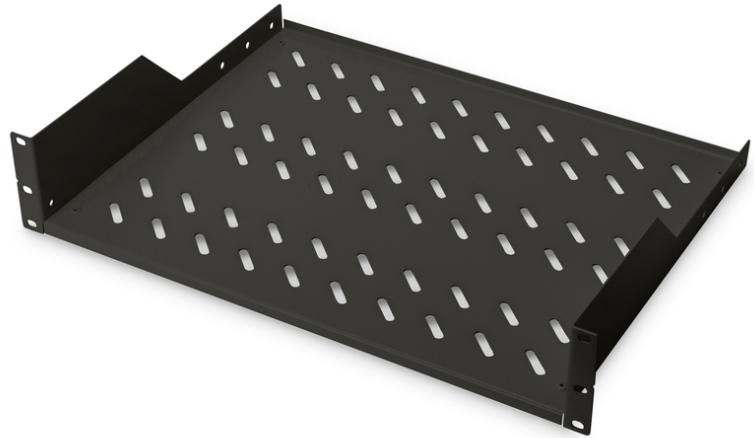


DIGITUS Shelf for Fixed Installation in 483 mm (19") Cabinets

DN-19 TRAY-2-SW
 EAN 4016032222613



2U fixed shelf for racks from 450 mm depth 88,5x483x352 mm, up to 25 kg, black (RAL 9005)

The shelves for fixed mounting can be installed easy on the two front 483 mm (19") profile rails of your 483 mm (19") network- or server cabinet. Due to their stable, perforated steel sheet with a high load capacity, they are the optimal surface for components which are not 483 mm (19") suitable.

- Fixed installation
- sturdy, perforated steel sheet
- incl. fixing material

- 2-point fixing (front 19" profile rails)
- Color: black, RAL 9005
- Load capacity: 25 kg
- Mounting type: Fixed mounting
- Units: 2
- Inch form factor (IEC 60297): 482.6 mm (19")
- Suitable cabinet depth: ≥ 450 mm

Package contents

- Installation set (screws, cage nuts, washers)

Logistics						
	Number (pcs)	Weight (kg)	Depth (cm)	Width (cm)	Height (cm)	cm ³
Packaging Unit Carton	5	11.66	50.00	51.00	39.50	100,725.00
Packaging Unit Inside	1	2.33	49.30	27.40	9.50	12,832.80
Packaging Unit Single	1	2.33	49.30	27.40	9.50	12,832.80
Net single without Packaging	1	2.00	35.20	48.30	8.90	0.00