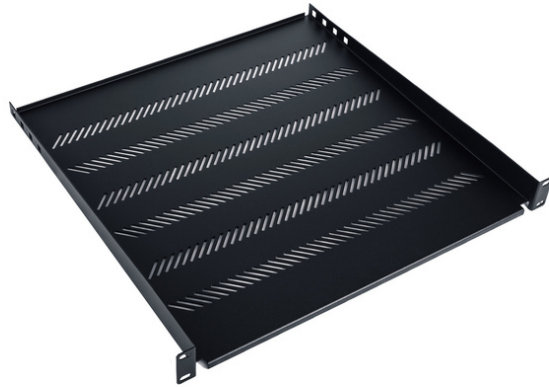


# DIGITUS® Shelf Fixed 19", 1U, 450 mm, 25kg load capacity, 4-point mounting, black, screws, bracket included

TN-19-450-1U-BK

EAN 5907772591482



General Properties • Width: 19" • Height: 1U, 2U • Load Capacity: 15kg, 25kg • Color: Black, Grey • Mounting Method: 2-point, 4-point • Material: Powder-coated steel sheet • Screws and mounting bracket (for 4-point mounted shelves) included

## More images:



## Safety notes

- When installing and using the accessory product for network cabinets, observe the respective safety instructions of the manufacturer or the cabinet system in which you want to use the accessory.

## EU responsible person

EU based economic operator ensuring the product complies with the required regulations.

ASSMANN Electronic GmbH  
Auf dem Schüffel 3  
Lüdenscheid, Germany  
<https://www.assmann.com>  
[info@assmann.com](mailto:info@assmann.com)