

# DIGITUS® 4K Wireless HDMI Extender Set, 150 m, 4K/60Hz

DS-55359

EAN 4016032507383



## 4K Wireless HDMI Extender Set, 100/150 m HDMI - HDMI, 4K/60 Hz

Experience wireless picture transmission of the highest quality with the 4K Wireless HDMI Extender (150 m, 4K/60 Hz). This powerful transmitter and receiver set enables the wireless transmission of HDMI video and audio signals in razor-sharp UHD resolution up to 4K/60 Hz - without any annoying cable connections. Thanks to the latest wireless technology (IEEE 802.11 b/g/n/ac, 5 GHz), the extender reliably transmits signals over distances of up to 150 meters in clear view (100 meters with the antenna folded in). The point-to-point connection ensures stable and low-latency transmission with a delay of only around 100 ms, ideal for presentations, video streaming or use in home cinemas. Set-up is very simple via Plug & Play - connect, switch on and get started straight away. An automatic pairing function automatically selects the best Wi-Fi channel to ensure an optimal connection. The power supply via USB-C makes the system particularly flexible and compatible. Maximum security is ensured by AES 128-bit encryption in combination with the WPA2 authentication protocol (WPA2-PSK / WPA2-Enterprise). Current standards such as HDMI 2.0 and HDCP 2.2 are supported, meaning that even protected content can be played back in the best quality. The H.265 compression ensures efficient transmission with the highest picture quality. With its compact design, LED status display and simple operating concept, the 4K Wireless HDMI Extender is the perfect solution for anyone who wants flexible, high-quality and secure HDMI signal transmission without cables.

### Transmits HDMI video and audio signals wirelessly in UHD 4K/60Hz over a distance of up to 150 m with unrestricted visibility

- Wireless HDMI signal transmission up to 150 m (unfolded antenna, unrestricted view)
- Wireless HDMI signal transmission up to 100 m (folded antenna, unrestricted view)
- Supports resolutions up to 4K UHD (4096x2160p, 60Hz)
- Point-to-point connection - 1x transmitter (source) + 1x receiver (output device)
- Simple operation and handling thanks to Plug & Play - plug in and go, no drivers or software required
- Automatic pairing & connection: Automatically establishes a connection via the most advantageous WiFi channel to ensure the best possible WiFi performance
- Supports signal sources (e.g. games consoles, Blu-Ray players, etc.) with HDMI output as well as PCs/notebooks with Windows, macOS

- Power supply via USB-C connection
- AES 128 bit encryption
- Authentication protocol: WPA2 (WPA2-PSK / WPA2-Enterprise)
- HDMI version: HDMI 2.0
- HDCP version: HDCP 2.2
- Radio standard: IEEE 802.11.b/g/n/ac
- Frequency band: 5G
- Connections per unit: 1x HDMI plug, 1x USB-C socket
- Action button & LED status display
- Power supply per unit: 5V/2A
- Compression: H.265
- Latency: approx. 100 ms (transmitter to receiver transmission)
- Audio format: PCM
- Audio channel: 2 channels
- ABS housing
- Power consumption per unit: approx. 10W
- Operating temperature: 0-40°C
- Dimensions (1 unit): L 9.1 x W 3.4 x H 1.5 cm
- Weight: transmitter 65 g, receiver 50 g
- Color: Black/Grey
- Manufacturer's instructions:
- The transmission distance with limited visibility cannot be determined across the board and depends on the conditions on site
- Walls, glass, etc. shorten the signal coverage or cause signal loss

### Attributes

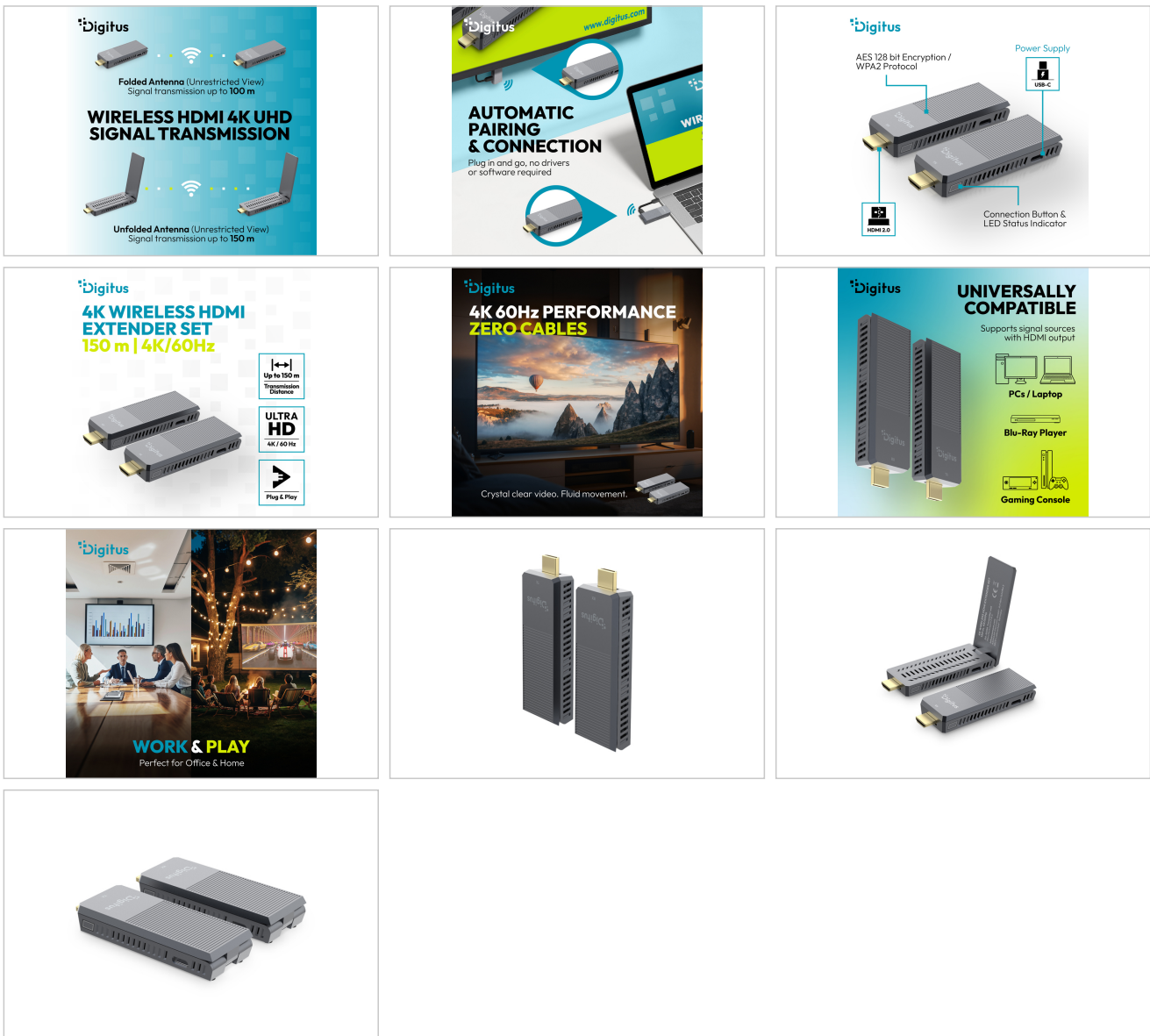
- HDTV Standard: Ultra HD 4K
- Resolution max.: 4096 x 2160 Pixel, 60Hz
- Distance: 150 m
- KVM: no
- PoE (Power over Ethernet): no
- Video connection ports: HDMI

### Package contents

- 1x transmitter unit
- 1x receiver unit
- 2x USB-A to USB-C cable (100 cm)
- 2x HDMI extension cable (12.5 cm)
- 1x QIG

Logistics						
	Number (pcs)	Weight (kg)	Depth (cm)	Width (cm)	Height (cm)	cm <sup>3</sup>
Packaging Unit Carton	30	12.45	31.50	40.50	29.00	36,996.80
Packaging Unit Inside	1	0.42	0.00	0.00	0.00	0.00
Packaging Unit Single	1	0.42	5.70	12.70	12.70	919.35
Net single without Packaging	1	0.27	5.70	12.70	12.70	919.35

More images:



Safety notes

- Please read these instructions carefully before using the appliance and keep them for future reference.
- For indoor use only.

- Do not use the device in a damp environment or near water.
- Do not expose the product to extremely high or low temperatures, strong light sources or direct sunlight.
- This product is not a toy. Keep it out of the reach of children.
- Do not connect the adapter to the mains until you have made sure that the mains voltage corresponds to the value specified on the rating plate.
- Never connect the power supply unit if it is damaged. In such cases, please contact your supplier.
- Disconnect the AC/DC mains adapter from the power supply if the appliance is not to be used for a longer period of time.
- Never open the product: The appliance may contain parts with lethal voltage. Repairs or maintenance should only be carried out by qualified personnel.
- Improper use, modifications or repairs carried out by the user will invalidate all warranties.
- - We accept no product responsibility for improper or non-intended use of the product.

**EU responsible person**

EU based economic operator ensuring the product complies with the required regulations.

ASSMANN Electronic GmbH  
Auf dem Schüffel 3  
Lüdenscheid, Germany  
<https://www.assmann.com>  
[info@assmann.com](mailto:info@assmann.com)