

# DIGITUS® CAT 6A field connector, AWG 22-27, supports up to 4PPoE, IEEE802.3bt

DN-93638

EAN 4016032499367



## CAT 6A tool-less connector, AWG 22-27, supports up to 4PPoE, IEEE802.3bt

The DIGITUS® CAT 6A connector for field assembly is a modern and high-quality RJ45 connector that is not only characterized by its super easy applicability, but is also reliable and time-saving for the field assembler in every application. The quick installation in just 60 seconds without any special tools, as well as the enormous flexibility, makes it the perfect choice for all locations. It is suitable for all networks, from voice to 10 Gigabit Ethernet. Satisfied customers thanks to fast and cost-saving installation, repair and maintenance are the logical consequence of this innovative RJ45 connector.

### Tool-free field assembly - easy with these shielded metal field connectors

- Transmission properties:
- Category 6A, 10GBase-T, 500 MHz
- ISO/IEC 11801 3rd Ed., EN 50173-1, IEC 60603-7-51
- Suitable for PoE/PoE/4PPoE (IEEE 802.3af, 3at, 3b)
- General properties:
- Cable installation via IDC strips, color coded according to EIA/TIA 568 A & B

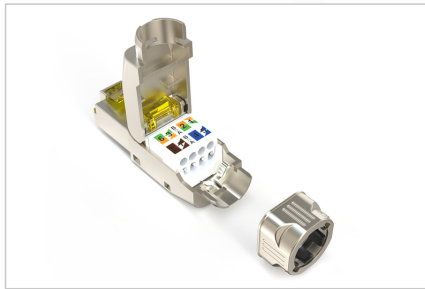
- Cable fixation by screwable strain relief
- RJ45 Plug, 8P8C
- Tool-free mounting connection
- 360° shield coverage
- Technical properties:
- Housing material: Zinc die-cast
- Contact material: Phosphor bronze
- Coating of the contacts: Nickel, gold-plated 0.5 µ
- Physical properties:
- Insertion force: 30N max. (IEC 60603-7-5)
- Operation temperature: -20°C bis zu +70°C (ISO/IEC 11801, ANSI/TIA 568 C.2)
- Mating cycles female: > 1500 acc. to ISO/IEC 11801, IEC 60603-7-5
- IDC wire size: AWG (27/7 - 22/1), solid and stranded conductor
- Tested with AWG 22/1 solid conductor
- Dielectric strength: 1000 VDC (Contact/Contact), 1500 VDC (Contact/Ground)

### Attributes

- Category: CAT 6A

| Logistics                    |              |             |            |            |             |                 |
|------------------------------|--------------|-------------|------------|------------|-------------|-----------------|
|                              | Number (pcs) | Weight (kg) | Depth (cm) | Width (cm) | Height (cm) | cm <sup>3</sup> |
| Packaging Unit Carton        | 500          | 9.40        | 38.00      | 25.00      | 21.00       | 19,950.00       |
| Packaging Unit Inside        | 50           | 0.94        | 25.00      | 19.00      | 7.00        | 3,325.00        |
| Packaging Unit Single        | 1            | 0.02        | 4.00       | 2.00       | 1.00        | 8.00            |
| Net single without Packaging | 1            | 0.02        | 4.00       | 2.00       | 1.00        | 8.00            |

**More images:**



**Safety notes**

- Protect product from moisture
- Avoid antistatic charging when installing the product
- Observe the specifications of the raw cable manufacturer during installation

**EU responsible person**

EU based economic operator ensuring the product complies with the required regulations.

ASSMANN Electronic GmbH  
Auf dem Schüffel 3  
Lüdenscheid, Germany  
<https://www.assmann.com>  
[info@assmann.com](mailto:info@assmann.com)