

# DIGITUS Consolidation point box, 6-port Keystone modules with intelligent cable manager

DN-93708-6  
EAN 4016032497516



**Consolidation Point Box, 6 ports Keystone modules with smart cable manager**

Consolidation points (CP) are collection points for structured building cabling, especially in the commercial or industrial sector. These core elements of cabling systems are used in buildings and open-plan offices as connection or distribution points for workstations. The DIGITUS® consolidation point box is designed to accommodate 4 Keystone modules. The box can be used for wall mounting, in ceilings, underfloor or as a desktop version. With optional accessories (AN-25188), it can also be mounted on a top-hat rail. A cost-effective and flexible solution for a wide range of areas and applications.

**Optimal solution to ensure flexible network cabling in the modern office environment (clean desk)**

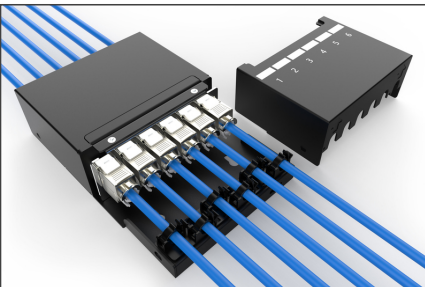
- CP box for 6 modules
- Mounting holes for UTP/STP keystones
- Separate earthing bolt
- Hinged cover with quick-release fastener for CP cable connections
- Cable openings on the front and rear with dust protection
- Material made from robust sheet steel
- Color: black powder-coated (similar to RAL9005)
- Protection class IP20
- Delivery without modules
- Dimensions: 175 x 110 x 45 (WxDxH)

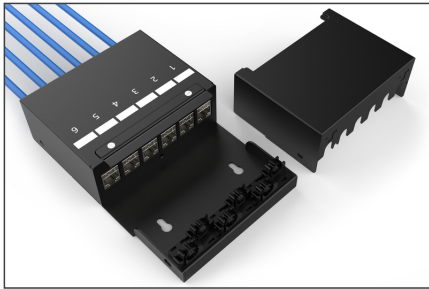
**Package contents**

- 1 x consolidation point box, 6 ports Keystone modules

Logistics						
	Number (pcs)	Weight (kg)	Depth (cm)	Width (cm)	Height (cm)	cm³
Packaging Unit Carton	10	8.30	28.00	26.00	21.00	15,288.00
Packaging Unit Inside	1	0.83	17.50	11.00	4.50	866.25
Packaging Unit Single	1	0.83	17.20	11.30	4.40	855.18
Net single without Packaging	1	0.74	17.20	11.30	4.40	855.18

**More images:**



**Safety notes**

- Avoid antistatic charging when installing the product

**EU responsible person**

EU based economic operator ensuring the product complies with the required regulations.

ASSMANN Electronic GmbH

Auf dem Schöffel 3

Lüdenscheid, Germany

<https://www.assmann.com>

[info@assmann.com](mailto:info@assmann.com)