

DIGITUS CAT 6A Class EA Network Outlet, Design-Compatible, Shielded, Flush Mount

DN-9010/8-1
EAN 4016032485728



CAT 6A Class EA network outlet, shielded 1x RJ45, LSA, pure white, flush mount, 8 direction

The CAT 6A network outlets from DIGITUS® are design compatible with common switch programmes. It is certificated to CAT 6A ANSI/TIA 568 and ISO/IEC 11801, EN 50173 and contains 1 shielded RJ45 socket. The cable installation takes place via IDC strips, color coded acc. EIA/TIA 568 A & B. The flush mount junction box is ideal for connecting your installation cables cleanly and neatly. The box is rounded off by the integrated field of view, with which you can optimally mark the junction box with a label insert.

Future-oriented standards and high-end quality for your network.

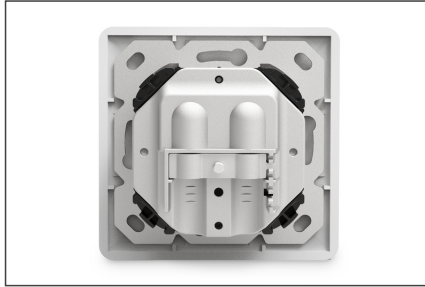
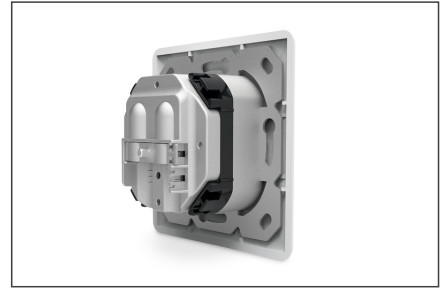
- Transmission property: Category 6A
- Area of application: Up to 500 MHz, 10GBase-T
- Norms: ISO/IEC 11801 2nd Ed., EN 50173-1, EIA/TIA 568-C, 802.3af, 802.3at PoE+
- General properties:
- Suitable for installation in trunking, surface and flush mount
- 1x RJ45 female, 8P8C
- Cable installation via IDC strips, color coded according to EIA/TIA 568 A & B
- Integrated strain relief for installation cables
- Complete shielding of RJ45 sockets and IDC strips due to zinc die-cast housing
- Strain relief 40°-angled female for patch cord
- Central plate: 50 x 50 mm
- Frame: 80 x 80 mm
- Central plate with integrated dust covers
- Design compatible to common switch ranges

- Technical properties:
- Housing material: Die-cast metal
- RJ45 female material: ABS UL 94V-0
- RJ45 female contact: Tinned phosphor bronze, 0.5 µ gold-plated contact
- RJ45 shielding: Tinned bronze
- IDC termination clamp: Krone LSA+, UL 94V-2, zinc plated phosphor bronze
- Conductor plate: FR4, UL 94V-0
- Physical properties:
- Insertion force: 30N max. (IEC 60603-7-5)
- Retention strength: 7.7 kg between jack and plug
- Operation temperature: -20° C to +70 °C (ISO/IEC 11801, EN 50173-1, ANSI/TIA/EIA 568 C)
- Mating cycles female: > 750 acc. to ISO/IEC 11801, IEC 60603-7-5
- Clamp: > 200 acc. to ISO/IEC 11801, IEC 60603-7-5
- IDC wire size: 22 – 26 AWG solid and stranded conductor
- Insulation resistance: > 500 MOhm
- Contact resistance: < 20 MilliOhm
- Dielectric strength: 1000 VDC (Contact/Contact), 1500 VDC (Contact/Ground)
- Not compatible with R&M freenet patch cords
- Installation depth: 28 mm
- Colour: White RAL9003

Package contents

- Network Outlet, flush mount
- Screws
- Instruction manual

Logistics						
	Number (pcs)	Weight (kg)	Depth (cm)	Width (cm)	Height (cm)	cm³
Packaging Unit Carton	60	0.70	28.50	38.00	32.00	34,656.00
Packaging Unit Inside	1	0.01	0.00	0.00	0.00	0.00
Packaging Unit Single	1	0.01	9.00	9.00	6.00	486.00
Net single without Packaging	1	-0.25	9.00	9.00	6.00	486.00

More images:**Safety notes**

- Protect product from moisture
- Avoid antistatic charging when installing the product
- Observe the specifications of the raw cable manufacturer during installation

EU responsible person

EU based economic operator ensuring the product complies with the required regulations.

ASSMANN Electronic GmbH
Auf dem Schüffel 3
Lüdenscheid, Germany
<https://www.assmann.com>
info@assmann.com