

DIGITUS HDMI IP Extender Receiver, Full HD

DS-55518

EAN 4016032482727



HDMI IP Video Extender, Receiver Unit for DS-55517

Expand the HDMI IP Extender Set (DS-55517) with additional receiver units to reproduce your AV content on multiple monitors at the same time. The set extends Full HD AV signals using a CAT6 network cable (point-to-point connection) up to 120 m. In addition, using network switches and the individual receiver units (DS-55518), you can distribute your video content over up to 253 displays via the already existing network (IP connection) and extend them over an unlimited distance.

Use additional receiver units and your existing network infrastructure/network switches to display video content on up to 253 screens (IP connection)

- Use additional receiver units and your existing network infrastructure to display video content on up to 253 screens (IP connection)
- Extends Full HD AV signals with a CAT6 cable over an unlimited distance via the existing local network infrastructure or commercial network switches
- Supports resolutions of up to 1080p/60Hz, Full HD
- Supports CAT 6, CAT 6A, CAT 7, CAT 8 network cable
- IR interface enables remote control of the input source from the output screen
- HDCP 1.3

- Video bandwidth: 1.65 Gbps
- Receiver unit connections:
 - 1x HDMI output (Full HD, 1080p) - Connection output device
 - 1x RJ45 input - Connection CAT transmission cable
 - 1x IR input - Connection of IR receiver
 - 1x Power adapter input (DC 5V/2A) - Connection for external power adapter
- Suitable for wall mounting
- Operating temperature: 0-50°
- Power consumption: 8W
- Housing: Metal
- Dimensions (1 unit): L 10 x W 5.9 x H 2.5 cm
- Weight (1 unit): 165 g
- Color: black

Attributes

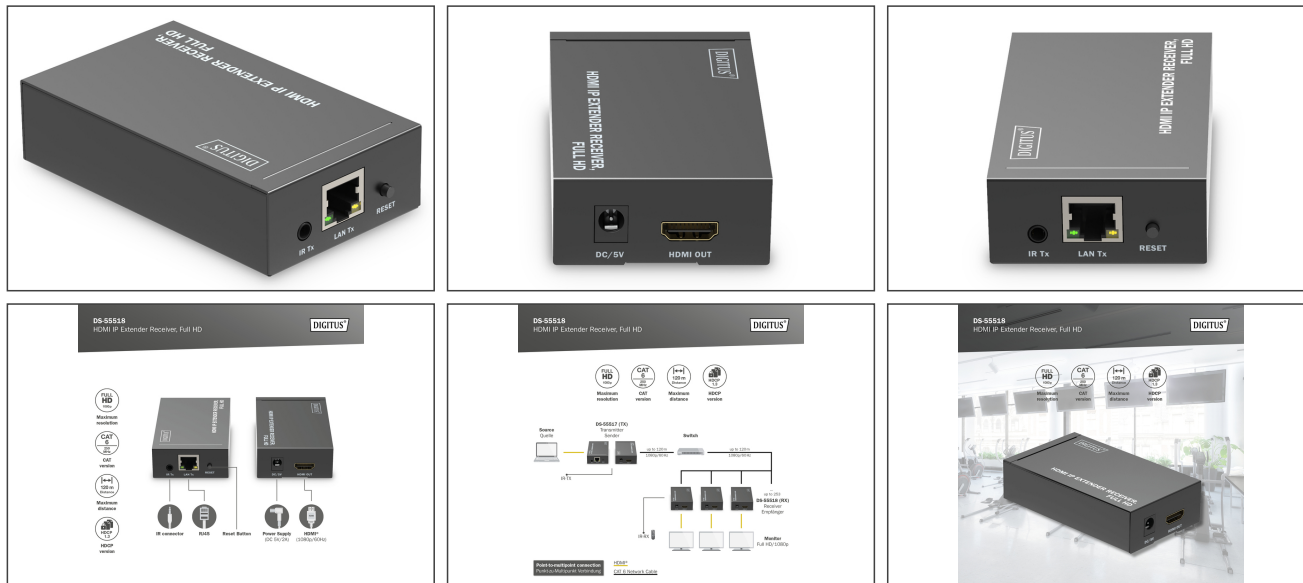
- KVM: no
- PoE (Power over Ethernet): no

Package contents

- 1x Receiver unit
- 1x IR receiver cable (1.2 m)
- 1x Power adapter (DC 5V/2A, 1.15 m)
- 1x Mounting material
- 1x User manual

| Logistics | | | | | | |
|------------------------------|--------------|-------------|------------|------------|-------------|-----------------|
| | Number (pcs) | Weight (kg) | Depth (cm) | Width (cm) | Height (cm) | cm ³ |
| Packaging Unit Carton | 20 | 8.50 | 39.50 | 32.50 | 36.00 | 46,215.00 |
| Packaging Unit Inside | 1 | 0.43 | 0.00 | 0.00 | 0.00 | 0.00 |
| Packaging Unit Single | 1 | 0.43 | 19.00 | 14.50 | 6.00 | 1,653.00 |
| Net single without Packaging | 1 | 0.30 | 19.00 | 14.50 | 6.00 | 1,653.00 |

More images:



Safety notes

- If the device is powered by a plug-in power supply, ensure that the power adapter is connected correctly and meets the specified requirements (e.g. voltage and current).
- Only use certified CAT5e or CAT6 cables to ensure stable signal transmission.
- For particularly long cable runs or in environments prone to interference, it is recommended to use shielded network cables.
- Make sure that all connections are tight and secure to avoid loose contacts that could affect the signal quality. Make sure that the HDMI and Ethernet connections are connected correctly.
- Make sure that the CAT cable is not laid near high-voltage power lines or other strong sources of electromagnetic interference to avoid signal interference.
- Only operate the device within the specified temperature range.
- Do not use the device outdoors or in damp or wet environments
- Check all connections and cables regularly for wear or damage. Cables and connections can wear out, especially with frequent use or long installations, which can lead to poor signal quality or system failure.

EU responsible person

EU based economic operator ensuring the product complies with the required regulations.

ASSMANN Electronic GmbH
Auf dem Schöffel 3
Lüdenscheid, Germany
<https://www.assmann.com>
info@assmann.com