

# DIGITUS Single monitor holder with gas pressure spring and clamp fastening

DA-90426

EAN 4016032479758



## Single Gas Spring Monitor Desk Mount 35", 15 kg max. black

With the universal monitor mount from DIGITUS®, you can conveniently attach a 15" - 35" monitor to your desk using a clamp mount. The quick-release function also makes it easier for you to install the monitor. The VESA mount is simply pushed into the corresponding holder and locks into place automatically. You can easily adjust the monitor to suit your needs and can swivel, tilt or rotate the monitor itself, e.g. for portrait format monitors. The support of the integrated gas pressure spring makes it easier for you to adjust the height of the monitor. In addition, the monitor cables can be neatly routed through the cable guides supplied. Do something good for yourself and your health by optimally adjusting the monitor to your body and sitting position.

**The desktop mount offers you the option of individually aligning monitors up to 35". The monitor can be swiveled, tilted and rotated. The integrated gas pressure spring makes height adjustment easy. With quick-release function.**

- For flat and curved monitors from 15" - 35"
- Maximum load: 15 kg
- VESA compatibility: 75 x 75, 100 x 100
- Tilt: -45°/+45°, swivel: -180°/+180°, front panel rotatable: -90°/+90°
- Swivel arm: offers maximum viewing flexibility

- Gas pressure spring: perfectly balances the weight of your monitor
- Built-in spring tensioner for perfect weight adjustment
- Integrated cable management: for an organized and tidy workspace
- Material: aluminum, plastic, steel
- Surface: Powder coating
- Monitor quantity: 1
- Mounting type: Table mounting
- Length: L 57.5 x W 12 x H 75 cm
- Weight: 5.35 kg
- Color: Black, matt

### Attributes

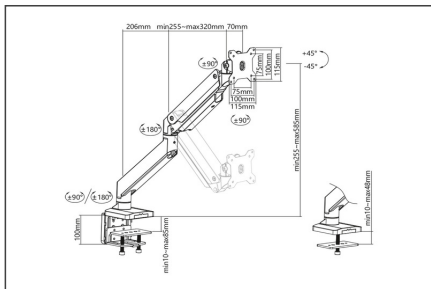
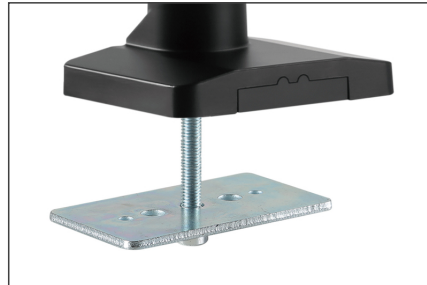
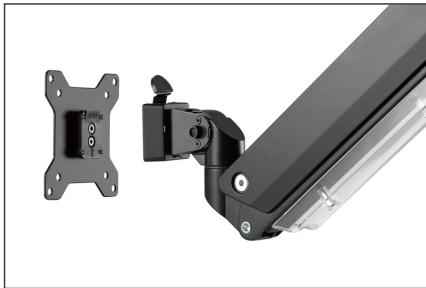
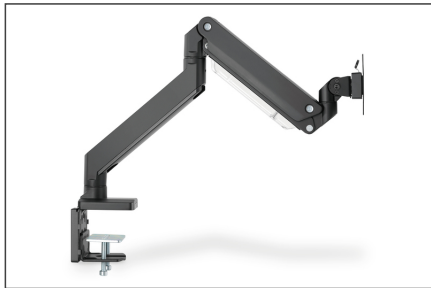
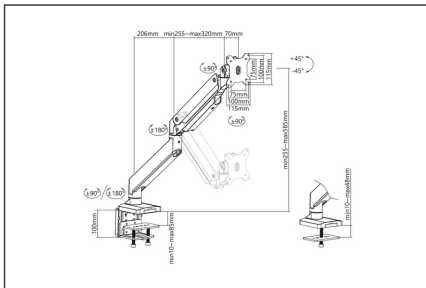
- Monitor weight (max.): 15 kg
- Mounting method: Clamp-mount
- Number of monitors: 1
- VESA mount: 75x75 mm, 100x100 mm

### Package contents

- 1x universal monitor desk mount
- 1x mounting accessories
- 1x quick guide

Logistics						
	Number (pcs)	Weight (kg)	Depth (cm)	Width (cm)	Height (cm)	cm <sup>3</sup>
Packaging Unit Carton	4	25.90	53.00	58.00	24.00	73,776.00
Packaging Unit Inside	1	6.48	25.50	56.00	11.00	15,708.00
Packaging Unit Single	1	6.48	25.50	56.00	11.00	15,708.00
Net single without Packaging	1	5.47	25.50	56.00	11.00	15,708.00

## A modern, adjustable computer monitor is shown on a wooden desk. The monitor is tilted back and to the right, displaying a green abstract pattern. It is mounted on a black, articulated arm that is attached to the desk. To the right of the monitor, there is a small white container holding several pens and pencils, and a stack of books. A black calculator is also visible on the desk surface. The background is a plain, light-colored wall.



- Please read the entire manual before starting assembly and installation. Please contact your local dealer if you have any questions about the instructions or warnings.
- CAUTION: Use with products that exceed the permitted weight may result in damage or possible injury.
- Brackets should be fitted in accordance with the installation instructions. Incorrect installation can result in damage or injury.
- Use safety equipment and suitable tools. The product should only be installed by specialists.
- This product can be installed on timber-framed, solid concrete or stone walls.
- The load-bearing surfaces should be able to safely withstand the entire weight of appliances and all additional components.
- Only use the installation screws supplied and DO NOT TIGHTEN the screws TOO TIGHT.
- This product contains small parts that can cause a choking hazard if swallowed. Keep these parts away from children.
- Only use this product indoors. Using the product outdoors can lead to injuries and damage.

- **IMPORTANT:** Before installation, please compare all components received with the components list. If parts are damaged or missing, ask your local dealer for replacement parts.
- **MAINTENANCE:** Check the bracket regularly for safety and stability (preferably every three months).

**EU responsible person**

EU based economic operator ensuring the product complies with the required regulations.

ASSMANN Electronic GmbH  
Auf dem Schüffel 3  
Lüdenscheid, Germany  
<https://www.assmann.com>  
[info@assmann.com](mailto:info@assmann.com)