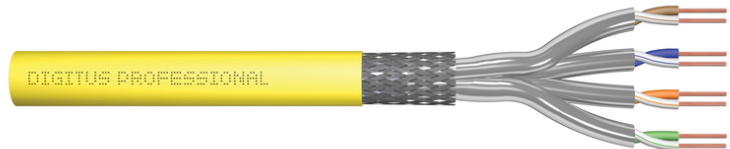


DIGITUS® CAT 7A S/FTP data cable - installation cable, 100 m, simplex, Dca-s1a d1 a1, GHMT PVP certified

DK-1743-A-VH-1

EAN 4016032462828



CAT 7A S-FTP installation cable, 1500 MHz Dca, AWG 22/1, 100 m ring, Sx, RAL 1016

The Digitus Cat 7 installation cable is designed for use in structured data centers and building cabling in accordance with ISO/IEC 11801, DIN EN 50288-4-1, DIN EN 50173, IEC 61156-7, EN 50288-9-1. The cable is ideal for the transmission of analog and digital data and supports PoE, PoE+, 4PPoE (IEEE 802.3af;3at;3bt). The shield structure consists of individually shielded pairs with a tinned copper braid, which ensures excellent shielding and electrical values.

Future-oriented standards and high-end quality for your network.

- Physical properties:
- Conductor: Bare copper wire, AWG 22/1
- System(s) of assessment and verification of constancy of performance: System 3
- Insulation: SFS-PE (foamed polyethylene jacket)
- Total number of insulated conductors: 8, twisted into 4 pairs
- Color code: Blue-white, orange-white, green-white, brown-white
- Shielding of the individual pairs: Aluminum-laminated polyester film, covers 100%
- Overall shielding: tinned copper braiding
- Outer sheath: Dca-s1a d1 a1 acc. to EN 50575; LSZH
- Outer sheath thickness (nominal): 0.60 mm (Dca); 0.60 mm (Cca)
- Outer sheath color: Yellow (RAL 1016)
- Mechanical properties:
- Strain relief: 150N max.
- Dynamic bending radius: 8x AD mm min.
- Static bending radius: 4x AD mm min.
- Transport and storage temperature range: -20 °C to +60 °C

- Operating temperature range: -20 °C to +60 °C
- Installation temperature range: 0 to +50C
- Outer diameter (nominal): 7.8 mm (Dca); 7.8 mm (Cca)
- Weight (kg/km): 65 kg (Dca); 65 kg (Cca)
- Electrical properties:
- Impedance: 100±5 Ohm @ 1-1000 MHz
- Capacitance: 40 pF/m nominal @ 1 KHz
- Capacitance unbalance (pair-earth): 1.6 pF/m max. @ 1 KHz
- Insulation resistance: 5 GOhm x km min.
- Loop resistance: 147 Ohm/Km max. (2% max. unbalanced resistance)
- Operating voltage: 72 Vdc max.
- Coupling attenuation: CA-Type 1b
- Phase delay: 450 nS/100 m max.
- Time delay: 10 nS/100 m max.
- Separation class: "d" according to EN 50174-2
- NVP: 79%
- Flame spread: EN 60332-1-2 (LSOH-PVC)
- Halogen-free, corrosivity: EN 60754-1/2 (LSOH)
- Smoke density: EN 61034-2

Attributes

- Assortment: Twisted Pair Installation Cables
- Category: CAT 7A
- Shielding: S-FTP, pairs in metal foil and braid shielding
- CPR: Dca
- Length: 100 m
- Color: yellow
- Jacket: LSOH
- Structure: 4 x 2 AWG 22/1, solid twisted pair

Logistics						
	Number (pcs)	Weight (kg)	Depth (cm)	Width (cm)	Height (cm)	cm³
Packaging Unit Carton	1	6.10	33.00	33.00	14.00	15,246.00
Packaging Unit Inside	1	6.10	28.00	28.00	16.00	12,544.00
Packaging Unit Single	1	6.10	33.00	33.00	14.00	15,246.00
Net single without Packaging	1	6.00	33.00	33.00	14.00	15,246.00

More images:



DIGITUS

CEP System
 Die geschichtete
 Vierpaar-Struktur

B2ca Shielded
 Very high

Cca Shielded
 High

Dca Shielded
 Medium

Eca Shielded
 Low

1+

3

1+ + 2-Elementare
 Twisted Pairs
 + 2-Elementare
 Twisted Pairs
 + 2-Elementare
 Twisted Pairs
 + 2-Elementare
 Twisted Pairs
 + 2-Elementare
 Twisted Pairs

3 + 3-Elementare
 Twisted Pairs
 + 3-Elementare
 Twisted Pairs
 + 3-Elementare
 Twisted Pairs

S Abschirmung
 Shielding

d Abschirmung
 Shielding

a Abschirmung
 Shielding

Standard Cca s1a d1 a1



DIGITUS

Leitungsparameter Transmission Properties

MHz	ATT	RETT	PKWGT	AKA	PKAKA	TK	ELWERT	PKELWERT
1	1.15	1.10	1.07	1.04	1.04	0.91	1.06	1.06
10	4.2	3.9	3.7	3.5	3.5	3.1	3.6	3.6
100	14.4	13.0	12.7	12.0	12.0	10.2	11.8	11.8
1000	28.0	25.0	24.0	22.0	22.0	18.0	22.0	22.0
10000	34	28	26	23	23	19.0	23	23
100000	37	29	27	24	24	20.0	24	24
1000000	40	30	28	25	25	21.0	25	25
10000000	44	31	29	26	26	22.0	26	26
100000000	48	32	30	27	27	23.0	27	27

Leitungsparameter sind für 100 Ohm spezifiziert. Alle anderen Werte sind für 120 Ohm spezifiziert.

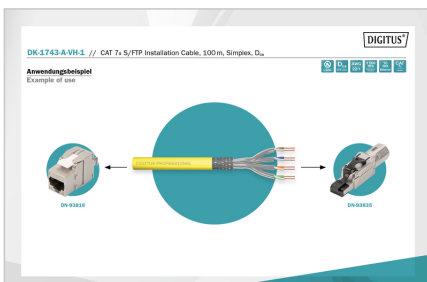
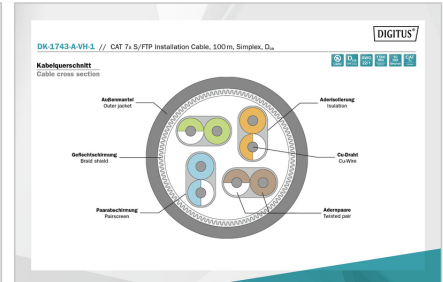
DIGITUS

Produktinformation Product Information

Elektrische Eigenschaften Electrical Properties

Physikalische Spezifikationen Physical Properties

Mechanische Eigenschaften Mechanical Properties

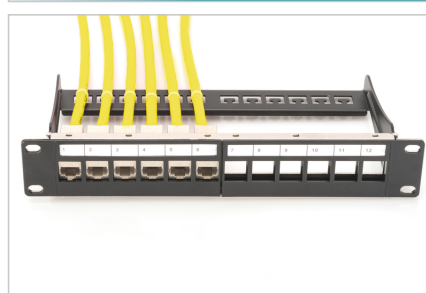


DIGITUS

CAT 7A S/FTP Installation Cable, 100m, Simplex, Dca

1500 MHz
 40 Gbit Ethernet
 CAT 7A
 Dca
 CRP class

AWG 22/1
 LSZH



Safety notes

- Data cables must not be bent, stretched or twisted excessively. Sharp bends can damage the cable sheath and lead to failures or short circuits.
- Installation only by trained specialists.
- Installation only in dry rooms.
- The data cable must not be in direct contact with other electrical cables or high-voltage sources in order to avoid electromagnetic interference.

EU responsible person

EU based economic operator ensuring the product complies with the required regulations.

ASSMANN Electronic GmbH
 Auf dem Schüffel 3
 Lüdenscheid, Germany
<https://www.assmann.com>
info@assmann.com