

DIGITUS® Modular Patch Panel, 12-port

DN-91419

EAN 4016032455561



Modular Patch Panel, shielded, 12-Port Blank, 1U, 254mm (10") Rack Mount, grey RAL 7035

Modular Patch Panel, shielded, 12-Port, Blank, 1U, 254mm (10") Rack Mount, grey RAL 7035

Suitable for shielded and unshielded DIGITUS® Keystone Modules and Couplers

- Patch Panel for Keystone Modules
- Shielded
- Suitable for 254 mm (10") Rack Mount

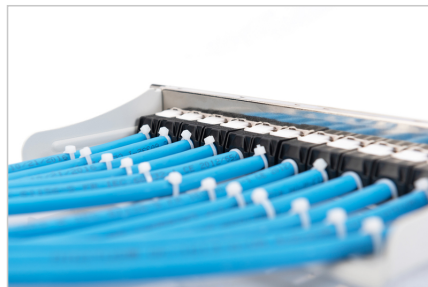
- 1U
- Color grey (RAL 7035)
- Label window with tag

Attributes

- Color: light grey, RAL 7035
- Ports: 12
- Units: 1
- Category: CAT 6A

Logistics						
	Number (pcs)	Weight (kg)	Depth (cm)	Width (cm)	Height (cm)	cm³
Packaging Unit Carton	20	8.30	52.00	28.00	30.00	43,680.00
Packaging Unit Inside	1	0.42	12.00	27.00	5.50	1,782.00
Packaging Unit Single	1	0.42	12.00	27.00	5.50	1,782.00
Net single without Packaging	1	0.34	12.00	27.00	5.50	1,782.00

More images:





Safety notes

- Protect product from moisture
- Avoid antistatic charging when installing the product
- Observe the specifications of the raw cable manufacturer during installation

EU responsible person

EU based economic operator ensuring the product complies with the required regulations.

ASSMANN Electronic GmbH
Auf dem Schüffel 3
Lüdenscheid, Germany
<https://www.assmann.com>
info@assmann.com