

# DIGITUS CAT 6A Patch Panel, shielded, 12-Port, 1HE, 10", black

DN-91612S-EA  
EAN 4016032454861



## CAT 6A Patch Panel, shielded, 12-Port label field, 1U, 10" rack mount, black RAL 9005

The CAT 6A patch panel is available in this 12 port version. It offers sturdy design by its 1.5mm galvanic cold rolled steel. Perfect for 10" cabinet mounting. The fully shielded RJ45 sockets provide an optimal stability for your cables with best performances. The patch panel applies to (IEEE 802.3at/af) PoE+ standard. It is shielded electromagnetically and offers lost and interruption free forwarding of your data in your network. The 360 degree shielding at the contact points makes sure every single point of consolidation is shielded perfectly.

### Future-orientated standards and high-end quality for your network.

- Transmission properties: Category 6A, Class EA
- Area of application: Up to 500 MHz, 10GBase-T
- Norms: ISO/IEC 11801 2nd Ed., EN 50173-1, EIA/TIA 568-C, 802.3af, 802.3at PoE+
- Suitable for surface mount installation
- RJ45 female, 12P12C
- Cable installation by IDC strips
- Cable fixing with cable ties
- Central ground connection
- 360° shield coverage
- Housing material: 1.5 mm galvanic cold rolled steel, acc. to EN1.4301, UNS S30400, AISI 304 and LMSAD110
- RJ45 female material: ABS UL 94V-0

- RJ45 female contact: Tinned phosphor bronze, 0.5 µ gold-plated contact
- RJ45 shielding: Tinned bronze
- IDC termination clamp: Krone IDC+, UL 94V-2, zinc plated phosphor bronze
- Conductor plate: FR4, UL 94V-0
- Insertion force: 30N max. (IEC 60603-7-5)
- Retention strength: 7.7 kg between jack and plug
- Operation temperature: -20° C to +70 °C (ISO/IEC 11801, EN 50173-1, ANSI/TIA/EIA 568 C)
- Mating cycles female: > 750 acc. to ISO/IEC 11801, IEC 60603-7-5
- Clamp: > 200 acc. to ISO/IEC 11801, IEC 60603-7-5
- IDC wire size: 22 – 26 AWG solid and stranded conductor
- Insulation resistance: > 500 MOhm
- Contact resistance: < 20 MilliOhm
- Dielectric strength: 1000 VDC (Contact/Contact), 1500 VDC (Contact/Ground)
- Ground wire: Not included

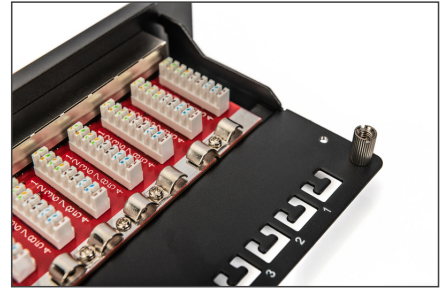
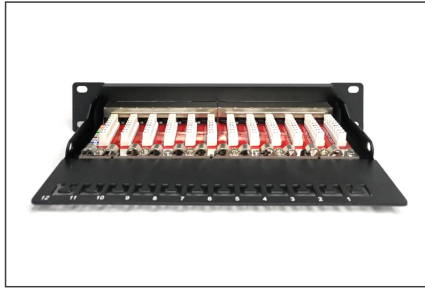
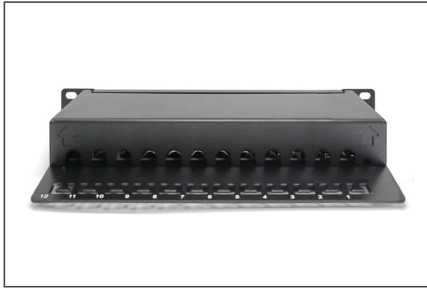
### Attributes

- Color: black, RAL 9005
- Ports: 12
- Units: 1
- Category: CAT 6A

### Package contents

- 1 x 10" patch panel, 12-port
- 1 x Manual

Logistics						
	Number (pcs)	Weight (kg)	Depth (cm)	Width (cm)	Height (cm)	cm³
Packaging Unit Carton	20	17.80	55.00	32.00	29.00	51,040.00
Packaging Unit Inside	1	0.89	26.00	6.00	12.00	1,872.00
Packaging Unit Single	1	0.89	26.00	6.00	12.00	1,872.00
Net single without Packaging	1	0.82	26.00	6.00	12.00	1,872.00

**More images:****Safety notes**

- Protect product from moisture
- Avoid antistatic charging when installing the product
- Observe the specifications of the raw cable manufacturer during installation

**EU responsible person**

EU based economic operator ensuring the product complies with the required regulations.

ASSMANN Electronic GmbH  
Auf dem Schüffel 3  
Lüdenscheid, Germany  
<https://www.assmann.com>  
[info@assmann.com](mailto:info@assmann.com)