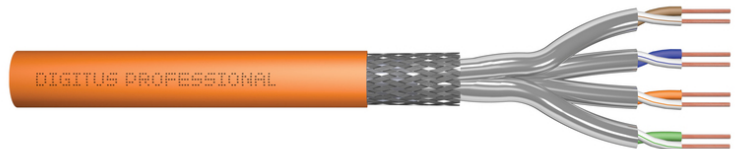


DIGITUS® CAT 7 S/FTP data cable - installation cable, 500 m, simplex, B2ca

DK-1745-VH-5

EAN 4016032435884



CAT 7 S-FTP installation cable, 1200 MHz B2ca (EN 50575), AWG 23/1, 500 m drum, Sx, orange

The Digitus Cat 7 installation cable is designed for use in structured data centers and building cabling in accordance with ISO/IEC 11801, DIN EN 50288-4-1, DIN EN 50173, IEC 61156-7, EN 50288-9-1. The cable is ideal for the transmission of analog and digital data and supports PoE, PoE+, 4PPoE (IEEE 802.3af;3at;3bt). The shield structure consists of individually shielded pairs with a tinned copper braid, which ensures excellent shielding and electrical values.

Future-oriented standards and high-end quality for your network.

- Physical properties:
- Conductor: Bare copper wire, AWG 23/1
- System(s) of assessment and verification of constancy of performance: System 3
- Insulation: SFS-PE (foamed polyethylene jacket)
- Total number of insulated conductors: 8, twisted into 4 pairs
- Color code: Blue-white, orange-white, green-white, brown-white
- Shielding of the individual pairs: aluminum-laminated polyester film, covers 100%
- Overall shielding: copper braiding
- Outer sheath: B2ca according to EN 50575; LSZH
- Outer sheath thickness (nominal): 0.50 mm (Eca); 0.52 mm (Dca); 0.60 mm (Cca); 0.60 (B2ca)
- Color: Orange (RAL 2008)
- Mechanical properties:
- Strain relief: 135N max.
- Dynamic bending radius: 8x AD mm min.
- Static bending radius: 4x AD mm min.

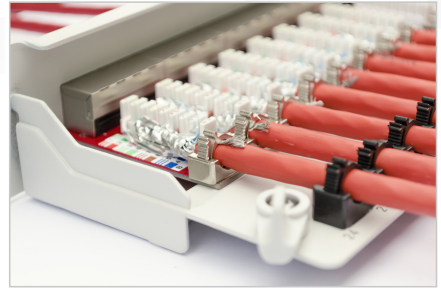
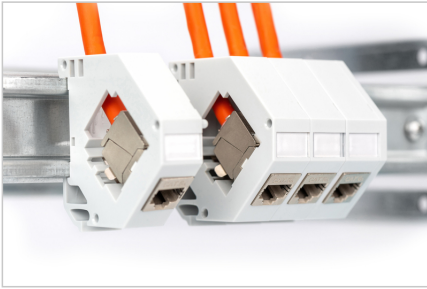
- Transport and storage temperature range: -20 °C to +60 °C
- Operating temperature range: -20 °C to +50 °C
- Installation temperature range: 0 °C to +50 °C
- Electrical properties:
- Impedance: 100±15 Ohm @ 4 - 1000 MHz; 100±25 OHM @ 100-600 MHz
- Capacitance: 45pF/m nom. at 1KHz
- Capacitance: 40 pF/m nominal @ 1 KHz
- Insulation resistance: 5 GOhm x km min.
- DC resistance: 95 Ohm/km max. (2% max. unbalanced resistance)
- Loop resistance: 190 Ohm/km max. (2% max. unbalanced resistance)
- Operating voltage: 72 Vdc max.
- Coupling attenuation: CA-Type 1b
- Phase delay: 450 nS/100 m max.
- Time delay: 10 nS/100 m max.
- Separation class: "d" according to EN 50174-2
- NVP: 79%
- Flame spread: EN 60332-1-2 (LSOH-PVC)
- Halogen-free, corrosiveness: EN 60754-1/2 (LSOH)
- Smoke density EN 61034-2

Attributes

- Assortment: Twisted Pair Installation Cables
- Category: CAT 7
- Shielding: S-FTP, pairs in metal foil and braid shielding
- CPR: B2ca
- Length: 500 m
- Color: orange
- Jacket: LSOH
- Structure: 4 x 2 AWG 23/1, solid twisted pair

Logistics						
	Number (pcs)	Weight (kg)	Depth (cm)	Width (cm)	Height (cm)	cm³
Packaging Unit Carton	1	28.01	38.00	38.00	38.50	55,594.00
Packaging Unit Inside	1	28.01	38.00	38.00	38.50	55,594.00
Packaging Unit Single	1	28.01	38.00	38.00	38.50	55,594.00
Net single without Packaging	1	27.85	38.00	38.00	38.50	55,594.00

More images:



DIGITUS

AWG 23/1 | 1200 MHz | 10 Gbit Ethernet | CAT 7 | 1000 m

20/7+50° | LSZH | B2_{ca} CPFL class

CAT 7 S/FTP Installation Cable, 500m, Simplex, B2_{ca}

DIGITUS

DK.1745-VH-S // CAT 7 S/FTP Installation Cable, 500m, Simplex, B2_{ca}

Anwendungsbeispiel
Example of use

DIGITUS

DK.1745-VH-S // CAT 7 S/FTP Installation Cable, 500m, Simplex, B2_{ca}

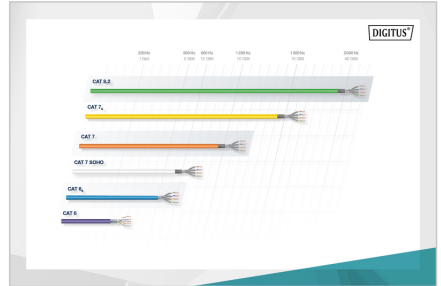
Kabelquerschnitt
Cable cross section

DIGITUS

Produktdaten / Product Information	Physische Spezifikationen / Physical Properties
Bestellnummer / Order Number: DK.1745-VH-S (500m) / DK.1745-VH-S (1000m)	Typ / Type: CAT 7 S/FTP Installation Cable
Material / Material: PVC (Schwarz) / PVC (Black)	Leitung / Conductor: 4 x 23 AWG (0,25mm) / 4 x 23 AWG (0,25mm)
Wahlweise / Optional: 1000m / 500m	Isolation / Insulation: PVC (Schwarz) / PVC (Black)
Abmessungen / Dimensions: 1000m / 500m	Temperaturbereich / Temperature Range: -20°C bis +75°C / -20°C bis +75°C
Umweltbedingungen / Environmental Conditions: 1000m / 500m	Flammverhalten / Flamm Behavior: LSZH (Low Smoke Zero Halogen)
CE-Kennzeichnung / CE Marking: CE	CE-Kennzeichnung / CE Marking: CE

DIGITUS

Leitungsparameter / Transmission Properties									
PAIRS	ATT	NEXT	PS NEXT	ACR	PSACR	RL	EXTEN	PS EXTEN	ATT
1	2	36	76	76	76	26	76	76	76
4	10	31	71	71	71	31	71	71	71
8	16	24	64	64	64	24	64	64	64
16	24	16	50	50	50	16	50	50	50
32	32	12	38	38	38	12	38	38	38
64	40	8	28	28	28	8	28	28	28
128	48	6	20	20	20	6	20	20	20
256	56	5	15	15	15	5	15	15	15
512	64	4	11	11	11	4	11	11	11
1024	72	3	8	8	8	3	8	8	8



DIGITUS

CEP Konformität / CE Marking	Bestandteile / Components	Leitungsparameter / Transmission Properties	Abmessungen / Dimensions	Zusatzinformationen / Additional Information
B2 _{ca}	Schwarz / High	1+	• Spannungsbereich / Voltage Range: 0V bis 250V AC • Temperaturbereich / Temperature Range: -20°C bis +75°C • Flammverhalten / Flamm Behavior: LSZH	• Spannungsbereich / Voltage Range: 0V bis 250V AC • Temperaturbereich / Temperature Range: -20°C bis +75°C • Flammverhalten / Flamm Behavior: LSZH
C _{ca}	Mittel / Med	3	• Spannungsbereich / Voltage Range: 0V bis 250V AC • Temperaturbereich / Temperature Range: -20°C bis +75°C • Flammverhalten / Flamm Behavior: LSZH	• Spannungsbereich / Voltage Range: 0V bis 250V AC • Temperaturbereich / Temperature Range: -20°C bis +75°C • Flammverhalten / Flamm Behavior: LSZH
D _{ca}	Niedrig / Low	a1	• Spannungsbereich / Voltage Range: 0V bis 250V AC • Temperaturbereich / Temperature Range: -20°C bis +75°C • Flammverhalten / Flamm Behavior: LSZH	• Spannungsbereich / Voltage Range: 0V bis 250V AC • Temperaturbereich / Temperature Range: -20°C bis +75°C • Flammverhalten / Flamm Behavior: LSZH
E _{ca}	Gering / Low	a1	• Spannungsbereich / Voltage Range: 0V bis 250V AC • Temperaturbereich / Temperature Range: -20°C bis +75°C • Flammverhalten / Flamm Behavior: LSZH	• Spannungsbereich / Voltage Range: 0V bis 250V AC • Temperaturbereich / Temperature Range: -20°C bis +75°C • Flammverhalten / Flamm Behavior: LSZH



Safety notes

- Data cables must not be bent, stretched or twisted excessively. Sharp bends can damage the cable sheath and lead to failures or short circuits.
- Installation only by trained specialists.
- Installation only in dry rooms.
- The data cable must not be in direct contact with other electrical cables or high-voltage sources in order to avoid electromagnetic interference.

EU responsible person

EU based economic operator ensuring the product complies with the required regulations.

ASSMANN Electronic GmbH
Auf dem Schüffel 3
Lüdenscheid, Germany
<https://www.assmann.com>
info@assmann.com