

# VESA Adapter Kit for iMac and Apple displays

DA-90356-1  
EAN 4016032431763



### VESA Adaptor 75x75 for iMac 21" & 27" Cinema Display 24" & 27", Thunderbolt Display 27"

You can prepare your iMac or Apple display for a VESA-compatible mounting solution using this adaptor. Thanks to the 75 x 75 VESA pattern, you can mount your device on any wall as well as on any table mount or swivel arm in accordance with the VESA standard.

### VESA Adapter Kit to prepare iMac and Apple displays for mounting on a wall

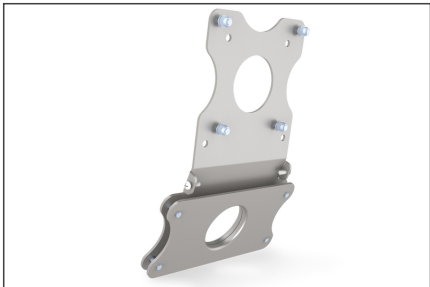
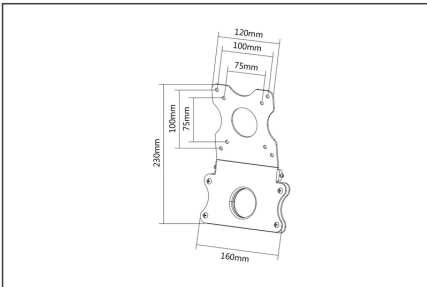
- Suitable for standard VESA mounting patterns of 75 x 75 and 100 x 100 mm
- Weight: 0.7 kg
- Dimensions: 240 x 165 x 38 mm
- Suitable for 21", 24" and 27" iMacs, 24" and 27" LED Cinema Displays, and 27" Thunderbolt Displays

### Package contents

- VESA adaptor
- Installation Accessories
- Manual

Logistics						
	Number (pcs)	Weight (kg)	Depth (cm)	Width (cm)	Height (cm)	cm³
Packaging Unit Carton	18	15.16	51.00	26.00	25.50	33,813.00
Packaging Unit Inside	1	0.84	24.00	16.50	3.80	1,504.80
Packaging Unit Single	1	0.84	24.00	16.50	3.80	1,504.80
Net single without Packaging	1	0.74	24.00	16.50	3.80	1,504.80

### More images:





#### **Safety notes**

- Please read the entire manual before starting assembly and installation. Please contact your local dealer if you have any questions about the instructions or warnings.
- CAUTION: Use with products that exceed the permitted weight may result in damage or possible injury.
- Brackets should be fitted in accordance with the installation instructions. Incorrect installation can result in damage or injury.
- Use safety equipment and suitable tools. The product should only be installed by specialists.
- The load-bearing surfaces should be able to safely withstand the entire weight of appliances and all additional components.
- Only use the installation screws supplied and DO NOT TIGHTEN the screws TOO TIGHT.
- This product contains small parts that can cause a choking hazard if swallowed. Keep these parts away from children.
- Only use this product indoors. Using the product outdoors can lead to injuries and damage.
- IMPORTANT: Before installation, please check all components received against the components list. If parts are damaged or missing, ask your local dealer for replacement parts.