

# DIGITUS Wall Outlet (FTTH) for 2x SC Simplex/LC Duplex

DN-931087  
EAN 4016032368045



**Wall Outlet (FTTH) for 2x SC Simplex, LC Duplex 2x splice holder, 19x86x86mm, grey (RAL 7035)**

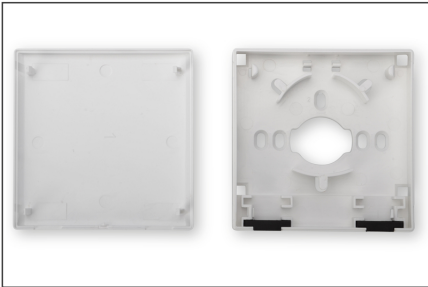
The item "DN-931087" from DIGITUS® is a wall outlet which was designed to use it in residential and business applications (FTTH) for the termination of up to 2 fibers. The installation is quick and easy.

**DIGITUS® Optical Termination Boxes are made for high demand IT-Infrastructure Solutions - designed and developed on highest standards.**

- Compact & economic design
- Allows cable entry from both sides
- Removeable cover for easy access
- Wall mounting
- Dimensions (HxWxD): 19x86x86 mm
- Cable ports: 4 cable ports (for cables with max. diameter of 5 mm)
- Capacity: 2 splices
- Adapter capacity: 2x SC Simplex/LC Duplex

Logistics						
	Number (pcs)	Weight (kg)	Depth (cm)	Width (cm)	Height (cm)	cm³
Packaging Unit Carton	200	14.50	50.00	41.00	32.00	65,600.00
Packaging Unit Inside	25	1.81	20.00	28.00	10.00	5,600.00
Packaging Unit Single	1	0.07	8.90	8.90	1.90	150.50
Net single without Packaging	1	0.07	8.90	8.90	1.90	150.50

**More images:**



**Safety notes**

- Avoid direct contact with light sources: Fiber optic cables, especially those with active light sources such as lasers (e.g. in optical communication systems), can emit dangerous radiation that can damage
- eyes. Take care never to look directly into the light of an optical fiber, even if the light source is invisible to the naked eye.
- When working with fiber optic cables, especially during tests or when working with lasers, protective goggles should always be worn to protect against harmful radiation.

- When plugging and unplugging the cable, only grasp the plug and do not pull directly on the cable.
- Do not kink or crush: Fiber optic cables are sensitive to mechanical stress.
- To protect cables from physical damage, they should be laid in special ducts or with protective materials
- Keep cable connectors clean: Fiber optic cables are sensitive to dust and dirt. Even small particles on the connectors can severely impair the signal quality.
- Cables should not be used in environments with extremely high or very low temperatures. Observe the product specifications for the maximum operating temperature of the cable
- Check cables regularly for visible damage such as cracks, kinks or signs of wear. Defective cables should be replaced immediately.

**EU responsible person**

EU based economic operator ensuring the product complies with the required regulations.

ASSMANN Electronic GmbH  
Auf dem Schüffel 3  
Lüdenscheid, Germany  
<https://www.assmann.com>  
[info@assmann.com](mailto:info@assmann.com)