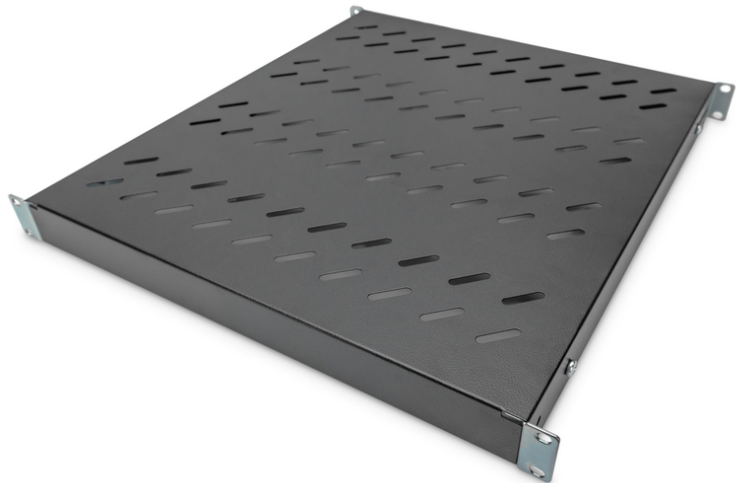


# DIGITUS® Shelf with Variable Rails for Fixed Mounting in 483 mm (19") Cabinets

DN-97647

EAN 4016032364993



**1U fixed shelf for 800 mm depth racks 43x483x508 mm, adjust. up to 700 mm depth, black**

The shelves for fixed mounting can be installed easy on the four 483 mm (19") profile rails of your 483 mm (19") network- or server cabinet. Due to their stable, perforated steel sheet with a load capacity of 50 kg, they are the optimal surface for components which are not 483 mm (19") suitable. The fixing rails are can be adjusted if needed.

- for fixed mounting on the four 483 mm (19") profile rails
- sturdy, perforated steel sheet
- incl. fixing material, M6
- 4-point fixing (front- and rear 19" profile rails)

**Attributes**

- Color: black, RAL 9005
- Load capacity: 50 kg
- Mounting type: Adjustable mounting rails
- Units: 1
- Weight: 3.2 kg
- Inch form factor (IEC 60297): 482.6 mm (19")
- Suitable cabinet depth: 800 mm

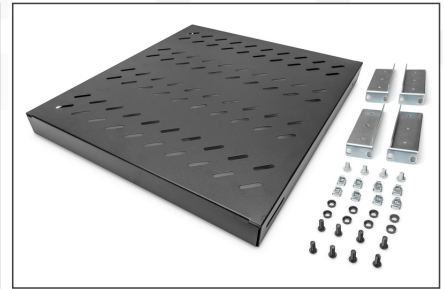
**Package contents**

- Installation set (screws, cage nuts, washers)

Logistics						
	Number (pcs)	Weight (kg)	Depth (cm)	Width (cm)	Height (cm)	cm³
Packaging Unit Carton	9	28.80	59.50	50.00	46.60	138,635.00
Packaging Unit Inside	1	3.20	52.50	50.00	5.50	14,437.50
Packaging Unit Single	1	3.20	45.00	53.00	5.00	11,925.00
Net single without Packaging	1	2.86	45.00	53.00	5.00	11,925.00

**More images:**





### Safety notes

- When installing and using the accessory product for network cabinets, observe the respective safety instructions of the manufacturer or the cabinet system in which you want to use the accessory.

### EU responsible person

EU based economic operator ensuring the product complies with the required regulations.

ASSMANN Electronic GmbH  
Auf dem Schüffel 3  
Lüdenscheid, Germany  
<https://www.assmann.com>  
[info@assmann.com](mailto:info@assmann.com)